

# Related Products: Heavy Duty Auto Drain Series ADH4000

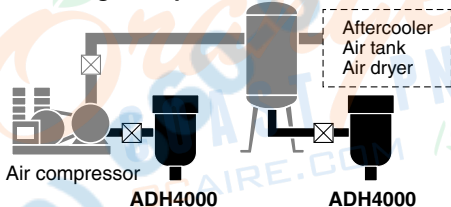
## Easy maintenance

It is possible to maintain without changing existing piping.

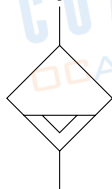
## No need for electric power and no waste of air.

Float style drain allows automatic drain discharge without electric power.

## Mounting example



JIS Symbol



## Specifications

Auto-drain type	Float type
Auto-drain valve type	N.O. (Normally open: Open in the case of pressure loss)
Proof pressure	2.5 MPa
Max. operating pressure	1.6 MPa
Operating pressure range <sup>Note)</sup>	0.05 to 1.6 MPa
Fluid <sup>Note)</sup>	Compressed air
Ambient and Fluid temperature	5 to 60°C (With no condensation) <Corrosive gas, flammable gas and organic solvents are not allowed.>
Max. drain discharge	400 cc/min (Pressure 0.7 MPa, in the case of water)
Weight	1.2 kg (With bracket: 1.3 kg)
Paint color	Light gray

Note) Use for air compressor with flow more than 50 ℓ/min (ANR).

## Accessory (Option)

Description	Part no.	Contents
Bracket set	BM58	Bracket ..... 1 pc. M6 x 10ℓ (Hex. bolt) ..... 2 pcs.
Ball valve piping set	ADH-C400	Ball valve/Rc 1/2 ..... 1 pc. Barrel nipple/R 1/2 ..... 2 pcs. Elbow/Rc 1/2 ..... 1 pc.

Note) The accessories (Option) are shipped unassembled, but packed in the same container.

## How to Order

ADH4000 —  04

Heavy duty auto-drain

Basic size

### Thread type

Nil	Rc
F	G
N	NPT

### Port size

04 1/2 (Female thread)

### Accessory (Option) \*

Nil	No option (Standard)
B	Bracket set
C	Ball valve piping set

### \* Notes

- When more than one option is desired, list in alphabetical order.
- Accessories are not factory assembled.
- Refer to each drawing for details of dimensions and mounting methods.
- Accessory "C" is available only with Rc thread.

HA

AT

ID

AMG

AFF

AM

Misc.