

Medical Industry Products Catalogue





SMC is pursuing customer satisfaction worldwide and supporting automation, through the most advanced pneumatic technology.

The 21st century — with the revolution in global IT, business methods are undergoing great changes. In these quickly developing ever changing times, customer satisfaction can only be achieved by a clear understanding of our customers' goals and objectives. Therefore, SMC has built an organization that listens carefully to our customers and responds quickly and specifically to their needs. SMC has established a widespread global network of locations in all major countries of the America's, Europe and Asia showing our active commitment to the world market. SMC supports this global network with a stable supply chain of global products, a high level of technical service and a solid communication network to meet our customers' needs and expectations.



SMC

Technical Development

Our engineering staff now exceed 1,000 and are located in Technical centres in Japan, United States and Europe. Quick, clear and detailed responses to customer requests are communicated through our sales group, and our engineers are constantly on the alert for new trends leading to world class new products.

Sales and Communication Network

Local subsidiaries have been established in 39 countries worldwide, with over 230 sales offices. Our sales force of over 3,900 maintains close communication with customers.

By establishing a strong base in each country and region with a large experienced sales force, SMC provides the best possible service in the industry. Maintaining close communication with our customers throughout the world keeps our engineering teams and our products at the leading edge of industry.

Production and Supply

Our product line offers 9,100 basic models with over 530,000 variations. Global production facilities provide a stable supply of products to customers in all markets.

The vast array of products satisfies nearly every application. Fast delivery of these high quality products at competitive costs is accomplished through our unique production system, and by maximizing our local production capabilities, a stable supply of product is guaranteed.

To give a global engineering network, technical centers have been established in the United State and Europe, together with Japan.

Following the basic concept of developing products from the customer's standpoint, SMC is dedicating a large staff and large financial resources to research and development. This is undertaken to promote research on basic technology with future potential and to produce products that are adapted to the needs of the marketplace in a timely manner. To provide positive and speedy response to the problems presented by customers throughout the world, technical centers have been established in the United States and Europe, creating a powerful global engineering network with Japan as its nucleus. All of the technical centers share information and maintain close contact in order to quickly respond to requirements locally, and to offer the same high quality of technical service throughout the world.



Isolation Liquid 2/3 Port Valve
Series LVM



Isolation Liquid 2/3 Port Valve
Series LVE



2/3 Port Solenoid Valve
Series VDW



3 Port Solenoid Valve
Series SY100



3 Port Solenoid Valve
Series VQ100



Ultra Compact Valve



Proportional Valve
Series PVQ



Electric Actuator
Series LJ, LG, LX



Electric Gripper



Digital Pressure Switch
Series ISE/ZSE



Compact Electro-Pneumatic
Regulator. Series ITV



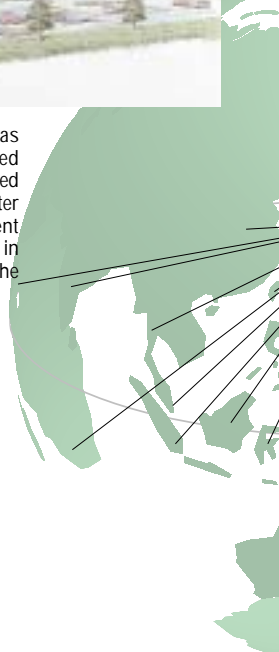
Membrane Air Dryer
Heatless Air Dryer. Series IDG/ID



JTC The Tsukuba Technical Center has expanded, and has a new twin-tower building from where it will oversee worldwide technical development.



The Tsukuba Technical Centre has expanded into its newly completed twin-tower building. It will be transformed into a fully equipped facility. At the center of SMC's research and development division, a staff of 1,000 is engaged in research and development activities for the entire world.



Custom Engineered Plastic Manifold
& Valve Technology





ATC (American Technical Centre) U. S. A.

The ATC has been established to meet the project requirements of customers in North America. The ATC has approximately 100 engineers available for customer support.



ETC (European Technical Centre) U. K.

The ETC has been established in the existing SMC UK site in Milton Keynes. Here, approximately 100 experienced engineers from SMC European subsidiaries are scheduled to be gathered to handle projects from their respective countries. This has enabled improved communication, faster and more accurate information, and a higher level of customer satisfaction.

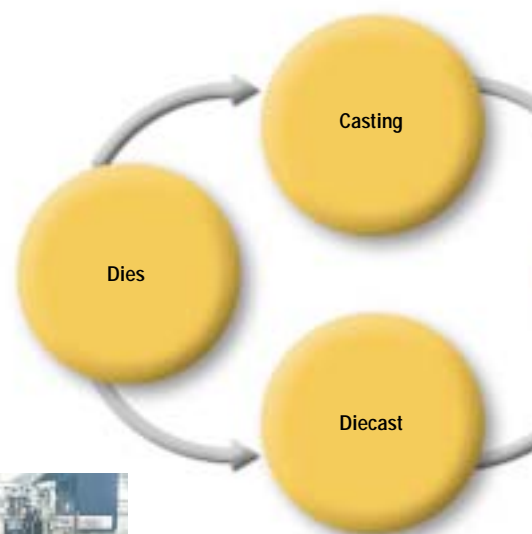


Production and Supply

SMC's unique production system achieves high quality, low cost and short lead times.

SMC products reflect a market trend towards greater diversification with a vast array of 9,100 basic models and over 530,000 variations. This is made possible by an integrated production system that includes casting, machining, surface treatment, coating, assembly and inspection, all performed in SMC's factories. Furthermore, we use a unique production control system in which instructions for all production operations are performed automatically based on information from orders received. As this result, SMC can secure high quality, low cost and a short lead time of its product.

SMC's integrated production system



Laboratory

High temperature test line



Clean room



Test equipment for hydrofluoric and nitric acids



Dies



Aluminum casting machine line



Machining line (6-axis automatic machine tools)



Tool control



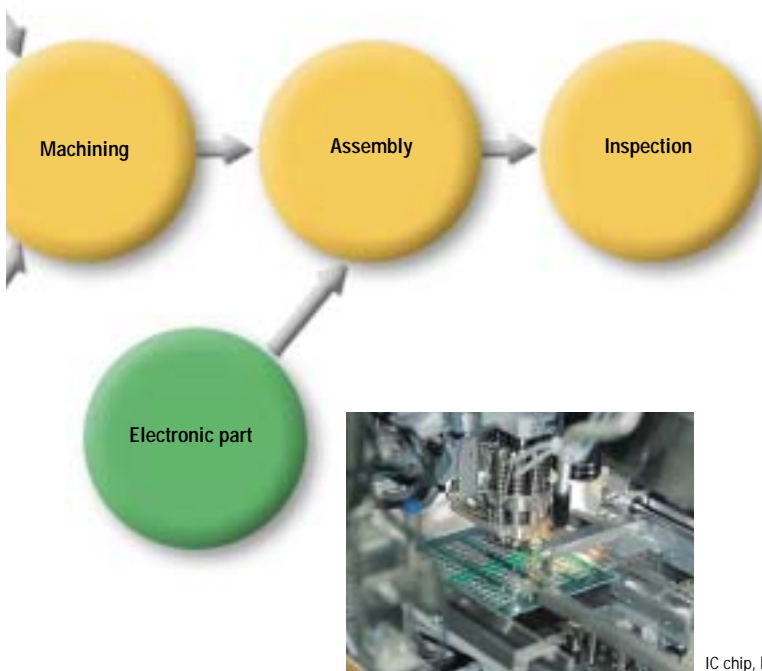
Loader, supplying work for part machining



Piston rod machining line



Coil winding

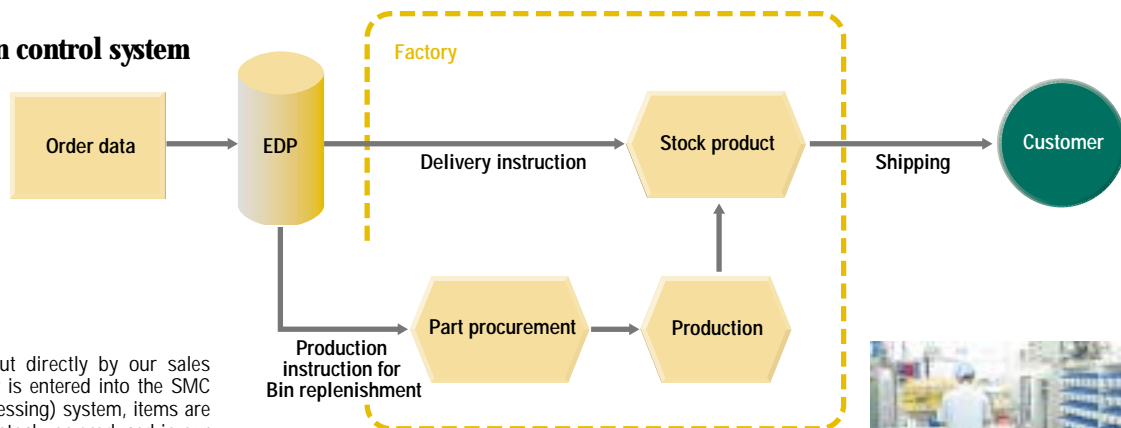


Assembly and inspection of temperature controller



IC chip, being mounted on printed board

SMC's production control system



Customer orders are input directly by our sales personnel. Once the order is entered into the SMC EDP (Electronic Data Processing) system, items are automatically drawn from stock, or produced in our manufacturing facilities. This is accomplished by the use of bin management systems.



Bin control shelf

A global production network supports a stable and continuous supply of high quality products.

SMC delivers products for world markets from five key factory locations in Japan, in the Tsukuba district of Ibaragi prefecture and the Soka district of Saitama prefecture, as well as from other key locations in China and Singapore. Additionally, to respond quickly and increase flexibility to the demands of the local market, overseas production facilities have been established in SMC subsidiaries around the world.



Soka Area (13 Factories/Saitama Prf.)

Soka #1 Factory & #2 Factory
Total Land Area: 24,945m²
Floor Space: 19,531m²



Overseas Local Production Facilities



Canada SMC Pneumatics(Canada)Ltd.



U.S.A SMC Pneumatics, Inc. (Indianapolis)



U.S.A SMC Pneumatics, Inc.(Los Angels)



Tsukuba Factory (Ibaragi Pref.)
Tsukuba #1 Factory & #2 Factory
Total Land Area: 57,191m²
Floor Space: 45,456m²



Kamaishi Factory (Iwate Pref.)
Total Land Area: 55,647m²
Floor Space: 23,022m²



Tohno Factory (Iwate Pref.)
Total Land Area: 60,638m²
Floor Space: 10,622m²



Yamatsuri Factory (Fukushima Pref.)
Total Land Area: 124,227m²
Floor Space: 17,204m²



U.K. SMC Pneumatics (U.K.) Ltd.



ly SMC Italia S.p.A



South Korea SMC Pneumatics Korea Co., Ltd.



Australia SMC Pneumatics (Australia) Pty. Ltd.



Germany SMC Pneumatik GmbH

Overseas Key Production Facilities



SMC (China) Co., Ltd.
Total Land Area: 82,939m²
Floor Space: 23,893m²



SMC Manufacturing (Singapore) Pte. Ltd.
Total Land Area: 23,961m²
Floor Space: 13,766m²

● Overseas Local Production Facilities

North/South America

Mexico	SMC Corporation (Mexico), S.A.DE C.V.
Argentina	SMC Argentina S.A.
Chile	SMC Pneumatics (Chile) S.A.

Europa/Africa

France	SMC Pneumatique S.A.
Spain, Portugal	SMC España, S.A.
Austria	SMC Pneumatics GmbH (Austria)
Switzerland	SMC Pneumatik AG
Sweden	SMC Pneumatics Sweden AB
Ireland	SMC Pneumatics (Ireland) Ltd.

Asia/Oceania

Singapore	SMC Pneumatics (S.E.A.)Pte. Ltd.
Malaysia	SMC Pneumatics (S.E.A.)Sdn. Bhd.
Taiwan	SMC Pneumatics (Taiwan) Co., Ltd.
Hong Kong	SMC Pneumatics (Hong Kong) Ltd.
Thailand	SMC Thailand Ltd.
Philippines	SMC Pneumatics (Philippines), Inc.
India	SMC Pneumatics (India) Pvt. Ltd.
New Zealand	SMC Pneumatics (New Zealand) Ltd.

Sales and Communication Network

Our goal of 20% global market share has been achieved, with local subsidiaries in 39 countries across the world.

Taking its first step in Australia in 1967, SMC continued to move quickly into the international marketplace, and has steadily established local subsidiaries in the major countries around the world. The current total has reached 230 locations in 39 countries. With the expansion of its international network, SMC has earned a solid reputation as reliable international brand, and has exceeded the goal of "20% global market share". We will continue to view the world as a single market and further develop our sales organization with even greater energy to provide "customer satisfaction" by responding accurately to individual demands of different customers in countries and regions around the world.

Canada SMC Pneumatics (Canada) Ltd.



U.S.A SMC Pneumatics, Inc.
(Indianapolis)

U.S.A SMC Pneumatics, Inc. (Los Angeles)



Mexico SMC Corporation (Mexico), S.A.DE C.V.

North/South America

U.S.A	SMC Pneumatics, Inc.
Canada	SMC Pneumatics(Canada)Ltd.
Mexico	SMC Corporation (Mexico), S.A.DE C.V.
Argentina	SMC Argentina S.A.
Brazil	SMC Pneumaticos Do Brasil Ltda.
Venezuela	SMC NEUMATICA VENEZUELA S.A.
Chile	SMC Pneumatics(Chile) S.A.
Bolivia	SMC Pneumatics Bolivia S.R.L.
Uruguay	BACO S.A.(Distributor)
Colombia	Airmatic Ltda.(Distributor)
Peru	IMPECO Automatización Industrial S.A.(Distributor)

.K SMC Pneumatics (U.K) Ltd.



Germany SMC Pneumatik GmbH



China SMC (China) Co.,Ltd.



Italy SMC Italia S.p.A



France SMC Pneumatique S.A.



Spain SMC España, S.A.



South Korea SMC Pneumatics Korea Co.,Ltd.



Taiwan SMC Pneumatics (Taiwan)Co.,Ltd.



Singapore SMC Pneumatics (S.E.A.)Pte.Ltd.



Europa/Africa

Germany	SMC Pneumatik GmbH
U.K	SMC Pneumatics (U.K) Ltd.
Italy	SMC Italia S.p.A
Romania	SMC Romania S.r.l
France	SMC Pneumatique S.A.
Spain,Portugal	SMC España, S.A.
Austria	SMC Pneumatics GmbH (Austria)
Czech	SMC Czech s.r.o.
Slovakia	SMC Slovakia s.r.o
Hungary	SMC Hungary kft.
Slovenia	SMC Slovenia d.o.o.
Switzerland	SMC Pneumatik AG
Ireland	SMC Pneumatics (Ireland) Ltd.
Sweden	SMC Pneumatics Sweden AB
Denmark	SMC Pneumatik A/S
Norway	SMC Pneumatics Norway AS
Russia	SMC Pneumatik LLC
Poland	SMC Industrial Automation Polska Sp.z.o.o
Netherlands,Belgium	SMC Pneumatics B.V.(Associated company)
Finland	SMC Pneumatikka OY (Associated company)
Greece	S. Parianopoulos S.A. (Distributor)
Turkey	Entek Pnomatik San.ve Tic.Ltd.Sti. (Distributor)
South Africa, Namibia	Hyflo Southern Africa(Pty.)Ltd.(Distributor)
Egypt	Saadani Trading & Ind. Services(Distributor)

Asia/Oceania

Singapore	SMC Pneumatics (S.E.A.)Pte.Ltd.
Malaysia	SMC Pneumatics (S.E.A.)Sdn.Bhd.
Taiwan	SMC Pneumatics (Taiwan)Co.,Ltd.
Hong Kong	SMC Pneumatics (Hong Kong) Ltd.
Thailand	SMC Thailand Ltd.
Philippines	SMC Pneumatics (Philippines).Inc.
China	SMC (China) Co.,Ltd.
South Korea	SMC Pneumatics Korea Co.,Ltd.
India	SMC Pneumatics (India) Pvt.Ltd.
Indonesia	P.T.Riyadi Putera makmur (Distributor)
Pakistan	Jubilee Corporation (Distributor)
Saudi Arabia	Assagaff Trading Est. (Distributor)
Israel	BACCARA GEVA (Distributor)
Australia	SMC Pneumatics (Australia) Pty.Ltd.
New Zealand	SMC Pneumatics (New Zealand) Ltd.
Japan	SMC CORPORATION



SMC Pneumatics (Australia) Pty. Ltd.

● Head office
● Branch office

9,100 basic models, and 530,000 variations. A wide range of variations to accommodate diverse applications.

Customers' needs, today, are in state of transition, from standardization to diversification. As a general supplier of pneumatic components, SMC provides the ideal products for multiple applications and complete systems. Therefore, a broad range of pneumatic variations is offered for each system component. Approximately 9,100 basic models are offered with over 530,000 variations. This complete array of products results in SMC pneumatic systems that are capable of specifically meeting infinitely diverse requirements.

1

Solenoid Valve



4/5 Port Solenoid Valve
3 Port Solenoid Valve

All Air System



4/5 Port Air Operated Valve
3 Port Air Operated Valve
All Air System Equipment

Process Valve

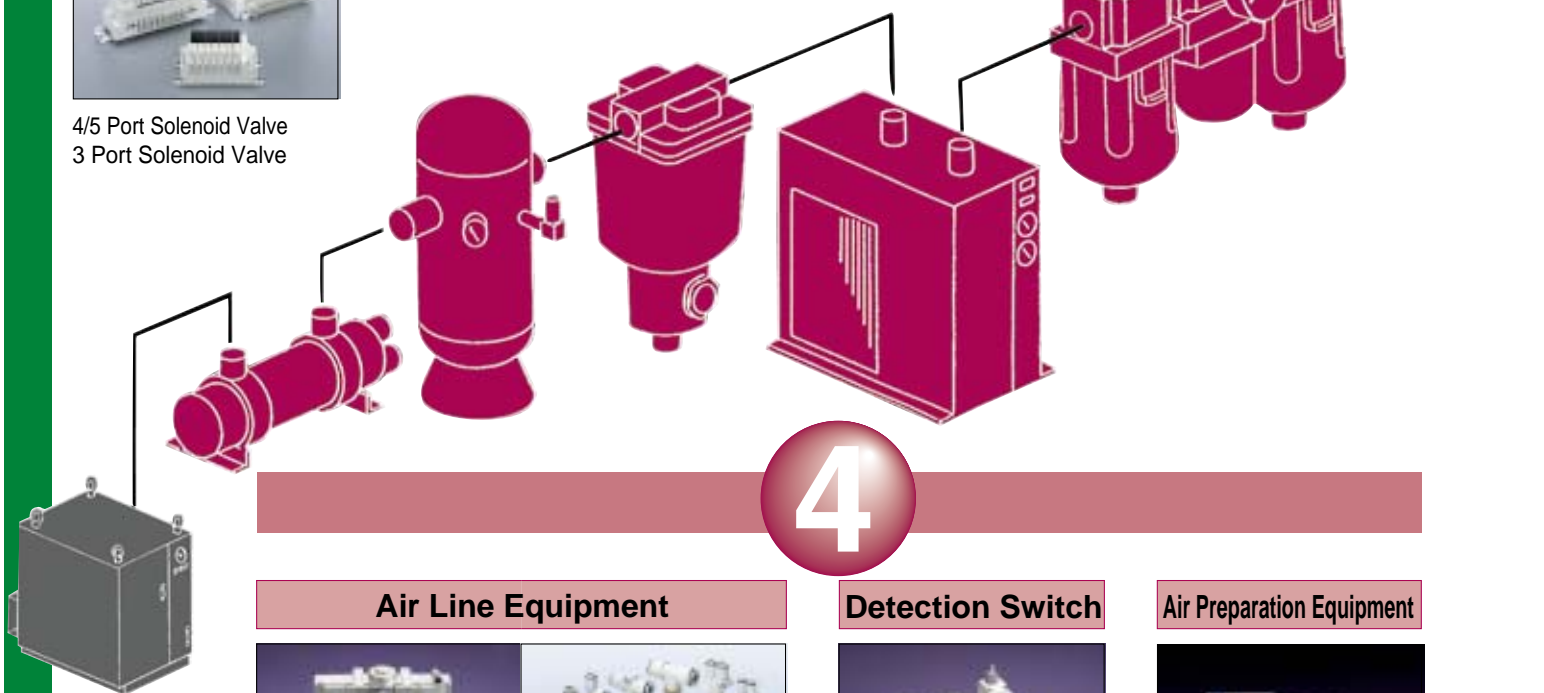


2/3 Port Solenoid Valve

Power Valve/Silencer



Power Valve
Silencer



4

Air Line Equipment



Fittings and Tubing

Modular Style FRL Combination
Air Filter
Pressure Control Equipment
Pressure Gauge Guide
Lubrication Equipment

Detection Switch

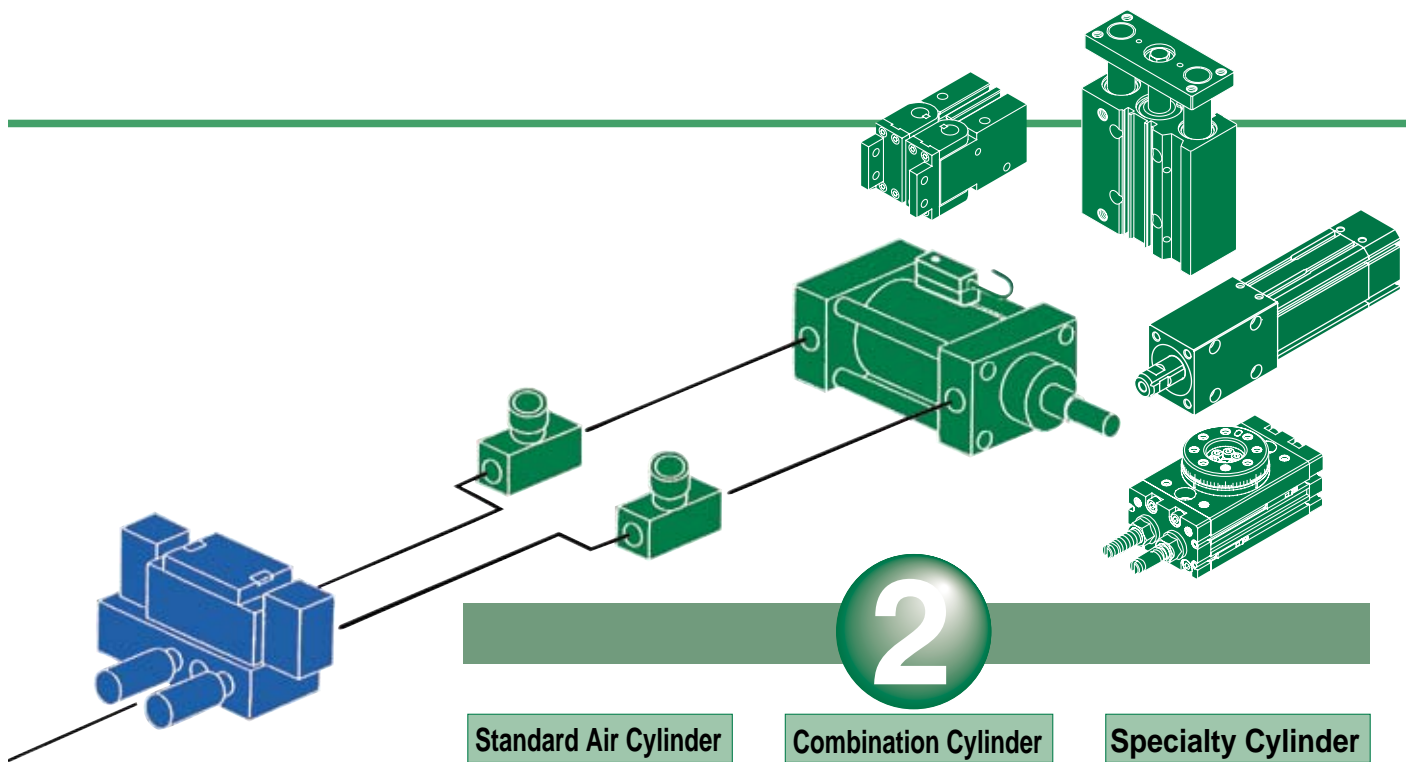


Pressure Switch
Flow Switch

Air Preparation Equipment



Aftercooler
Air Dryer
Filter



Standard Air Cylinder



Air Cylinder
Compact (Space-saving)
Design

Combination Cylinder



Fine Lock Cylinder
End Lock Cylinder
Valve Mounted Cylinder
Slide Unit
Guide Cylinder
Air Slide Table
Rodless Cylinder

Specialty Cylinder



Rotary Clamp Cylinder
Stroke Reading Cylinder
Hy-rodless Cylinder
Sine Rodless Cylinder
High Power Cylinder
Precision Cylinder
Air-hydro Unit

Related Products

Shock Absorber
Floating Joint
Auto Switch
Made to Order

3

Rotary Actuator



Vane Style
Rack Pinion Style
Rotary Cylinder

Air Gripper



Parallel Style
Angular Style
Rotary Gripper

Vacuum Equipment



Vacuum Unit
Vacuum Ejector
Air Suction Filter
Vacuum Pad
Free Mount Cylinder
with Vacuum Pad
Vacuum System
Related Equipment

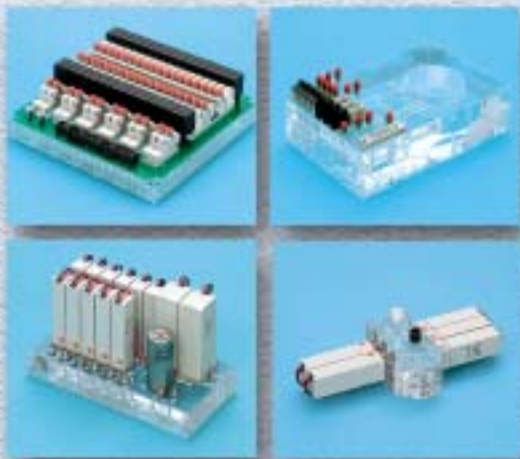
Flow Control Equipment



Speed Controller
Metering Valve with Silencer
Quick Exhaust Valve
Speed Exhaust Controller
Check Valve
Safety Speed Control Valve

Composite Valve Manifold for Air, Gas and Liquid

Custom Engineered Plastic Manifold & Valve Technology



- Reduced Space
- Reduced Weight
- Reduced Installation Time and Error
- Reduced Cost of Ownership

Main specifications of Plastic Manifold Note)

Material	Acrylic, PEEK, Polycarbonate, Polyetherimide, etc.
Fluid	Air, Gas and Liquid
Operating pressure	-100kPa to 0.7MPa (30 inHg to 100psi)
Operating temperature	0 to 40°C (32 to 104°F)
Ambient temperature	-5 to 50°C (23 to 122°F)

Note) Contact SMC for details

Conventional system



Series LVM

Isolation liquid valve
with custom connection

Series VDW

Liquid valve

Series PVQ

Proportional valve

Series SY100

Air pilot valve

Installation of valves on
plastic manifold



Custom machined/Bonded plastic manifold

SMC offers you the benefit of single Source Supply of plastic manifolds and Valves!!

- The widest selection of valves to suit the customers's exact specifications!
- The best in-house design resource enables integrated and compact manifold design!
- The best Before/After-sales services through world-wide network!



Tested and Packed to Customers Specifications

Reliable product quality in the global market

To enable our customers throughout the world to use our products with even greater confidence, SMC has obtained certification for international standards “ISO9001” and “ISO14001”, and have created a complete structure for quality assurance and environmental controls. SMC products continue to meet its customers’ expectations while also consider the company’s contribution within society.

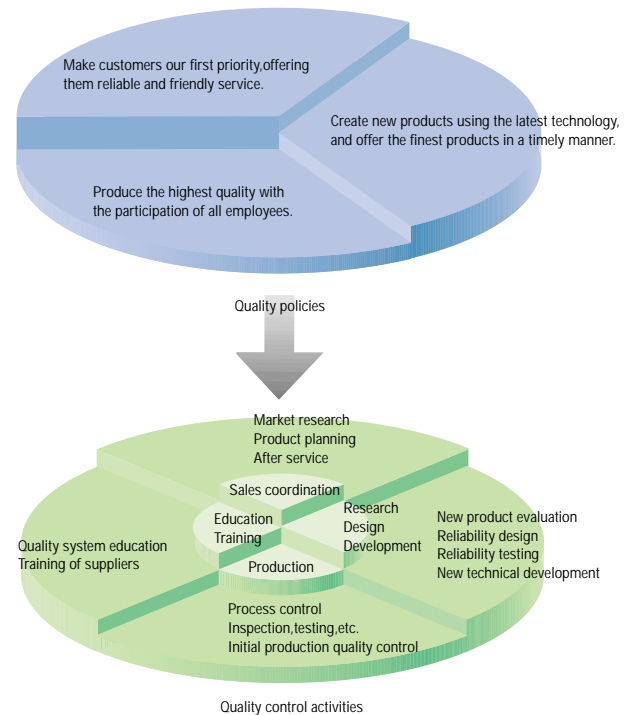
ISO9001

Quality management system

This is an international standard for quality control and quality assurance. SMC has obtained a large number of certifications in Japan and overseas, providing assurance to our customers throughout the world.



SMC's quality control system



ISO14001

Environmental management system

This is an international standard related to environmental management systems and environmental inspections. While promoting environmentally friendly automation technology, SMC is also making diligent efforts to preserve the environment.



ISO certification obtained

- **Applicable Products and Services**
Design, development and manufacture of the following products:
 Miniature 3, 4 and 5 port solenoid valves for pneumatics
 Standard compact cylinders for pneumatics
 Standard miniature cylinders for pneumatics
 Modular type pressure control valves for pneumatics
 Pneumatic fittings
 Electro-pneumatic positioners for pneumatics
 Miniature rotary actuators for pneumatics
 Solid state auto switches
 Constant temperature circulation equipment for semiconductors
 Vacuum ejectors (miniature type)
- **Related Facilities Included in the Registration**
 Tsukuba Technical Centre (design, development)
 Soka Factory No.1 (includes distribution center & Matsubara factory)
 Soka factory No.2 (manufacturing)
 Tsukuba factory No.1 (manufacturing)
 Tsukuba factory No.2 (manufacturing)
 Kamaishi factory (manufacturing)
 Yamatsuri factory (manufacturing)
 Tono factory (manufacturing)
 SMC Australia [ISO 9001]
 SMC China [ISO 9002]
 SMC Germany [ISO 9001]
 SMC Hong Kong [ISO 9002]
 SMC India [ISO 9002]
 SMC Italy [ISO 9002]
 SMC Italy (Sud) [ISO 9001/ISO14001]
 SMC Korea [ISO 9002]
 SMC New Zealand [ISO 9001]
 SMC Singapore [ISO 9002]
 SMC Spain [ISO 9002]
 SMC Sweden [ISO 9002]
 SMC Switzerland [ISO 9002]
 SMC Taiwan [ISO 9002]
 SMC UK [ISO 9001/ISO14001]
 SMC US [ISO 9001]

Table of Contents



Valves

Page

Gas and Chemical Liquid Valve/ Series LVM	17
High Purity Chemical Valve/ Series LV □	18
Ultra Compact Valve, 3 Port Solenoid Valve.	19
2 Port Oxygen Concentrator Valve/ Series DXT474	20
3 Port Solenoid Valve for Air/ Series VQ100	21
3 Port Solenoid Valve for Air/ Series SY100	22
2 Port Valve for Air/ Series VCA	23
2/3 Port Valve for Water and Air/ Series VDW	24
2 Port Valve for Water/ Series VCW	25
2 Port Valve for Heated Water/ Series VCB	26
2 Port Valve for Steam/ Series VCS	27



Air preparation

Page

Membrane Air Dryer/ Series IDG	29
Precision Regulator/ Series IR	30
Precision Clean Regulator/ Series SRP	31
Pressure Regulator/ Series AR	32
Fittings & Tubing	33
Air Filter/ Series AF	37



Actuators

Page

Pin Cylinder/ Series CJ1	38
Miniature Cylinder/ Series CJP	39
Mini Free-Mount Cylinder/ Series CUJ	40
Electric Actuator/ Series LG, LJ, LX □	41



Vacuum/Instrumentation

Page

Digital Pressure Switch/ Series ZSE/ISE	43
Vacuum Regulator/ Series IRV	44
Air Suction Filter/ Series ZF	45



Liquid Equipment

Page

High Purity Fluoropolymer Fittings & Tubing/ Series LQ, TL/TIL	46
------------------------------------------------------------------------------------	----



Temperature Control Equipment

Page

Thermo Chiller, Thermocon, Chemical thermocon.	47
-----------------------------------------------------------	----

Gas and Chemical liquid valve for medical equipment

Series *LVM*

Isolation Liquid 2/3 Port valve

Liquids and gases compatible with wetted materials

- **No liquid pooling**
Inclined flow passage, low dead volume
- **Non leakage**
- **Long life**
- **High speed**
Response time is minimized down to 10ms or less.
- **Low noise construction**
The specialized damper is provided on armature assembly for restraining the noise when energized, the noise level is minimized down to 50 dB or less.
- **Compact**
- **Oil free**
The media contact of this version is oil free construction which is needed for medical equipment.
- **Seals**
Body(plate) material : PEEK
Diaphragm material : EPDM



Variations

	2 Port		3 Port	
	LVM10	LVM20	LVM100	LVM200
Effective area mm ² (Cv)	0.72(0.04)	1.8(0.1)	0.63(0.035)	1.8(0.1)
Orifice size	ø1.5	ø2	ø1.4	ø2
Port size	M5	M6	M5	M6
Applicable tube	-	-	ø4 x ø2.5	ø6 x ø4
N.C. (Normally closed)	O	O	O	O
N.O. (Normally open)	-	-	O	O

O : Available

Specifications 2 Port

		2 Port	
		LVM10	LVM20
Valves specifications	Type	2 port direct operated diaphragm type	
	Fluid	Air and Liquid	
	Max. operating pressure	0.25 MPa	
	Orifice size	ø1.5	ø2
	Effective area (Cv)	0.72 (0.04)	1.8(0.1)
	Valve leakage	0	
	Fluid and ambient temperature	0 to 50°C	
	Mounting	Free	
Solenoid specifications	Coil rated voltage	24VDC	
	Allowable voltage	± 10% of rated voltage	
	Coil insurance	Class B	
	Power consumption	Inrush: 2.5W; Holding: 1W	
Material	Body	PEEK	
	Diaphragm	EPDM	

Specifications 3 Port

		3 Port	
		LVM100	LVM200
Valves specifications	Type	3 port direct operated diaphragm type	
	Fluid	Air and Liquid	
	Max. operating pressure	0.25 MPa	
	Orifice size	ø1.4	ø2
	Effective area (Cv)	0.63 (0.035)	1.8(0.1)
	Valve leakage	0	
	Fluid and ambient temperature	0 to 50°C	
	Mounting	Free	
Solenoid specifications	Coil rated voltage	24VDC	
	Allowable voltage	± 10% of rated voltage	
	Coil insurance	Class B	
	Power consumption	1.5W	
Material	Body	PEEK	
	Diaphragm	EPDM	

Consult SMC representative for additional material, voltage specifications and options.

High Purity Chemical Valve

Series LV

Air/Manually Operated

Integral Fitting Valves/LVC



Prevents Micro-Bubbles

Diaphragm (PTFE)

Special diaphragm construction insures gentle opening and closing that prevents the formation of micro-bubbles.

Minimal dead space

In addition to a body designed for smooth flow with minimal internal dead space, integral fittings eliminate the possibility of residual liquid in pipe threads.

Stable Sealing Surface

A unique guide ring on the piston rod eliminates lateral motion of the poppet, greatly increasing seal life and reducing particle formation.

Low particle generation

Piston bumper

A bumper absorbs piston momentum to minimize impact-induced particles.

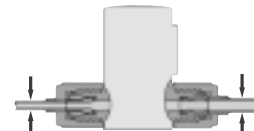
Back-pressure resistance and long life

Buffer

The diaphragm is supported by a buffer that minimizes deformation, which gives it long life and resistance to back-pressure.

Different tubing sizes can be selected

Hyper fitting



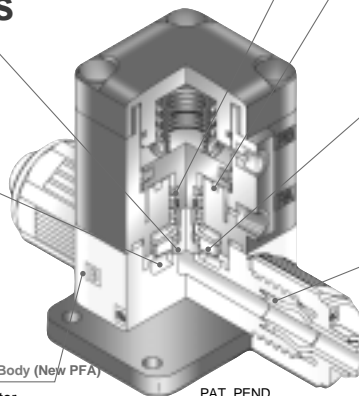
- No leak design (quadruple seal)
- Eliminates problems due to over tightening (special locking mechanism)
- High flexural strength (tube supports)

Outstanding corrosion resistance

Body (New PFA)

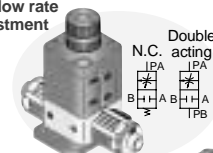
Compatible with chemicals such as acids, bases and ultrapure water.

PAT. PEND.

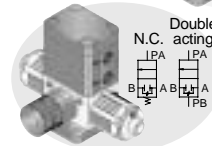


● Numerous variations

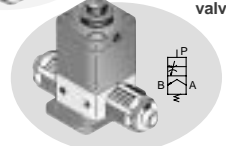
With flow rate adjustment



With by-pass



Suck back valve



Manual Operation-Series LVH

- Locking and non-locking types available
- Integral fitting type/Threaded type
- Manifolds ● Main applications and fields



For shut off

For air bleeding



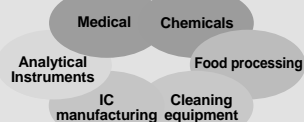
- N.C./N.O. with same configuration/Double acting
- Compatible with 100°C fluid temperature

Threaded Ports-Series LVA

- Three types of body material: SUS/PPS/PFA

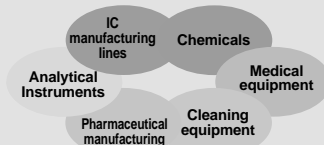
The ideal body material can be selected based on the application.

- Manifolds ● Main applications and fields



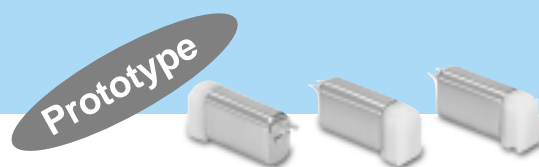
Integral Fittings-Series LVC

- Main applications and fields



Ultra Compact Valve

3 port Solenoid Valve



Size

7mm width (7W x 11H x 21.8L)

Low Power Consumption

0.3W - 0.3MPa (Cv 0.011)

0.5W - 0.5MPa (Cv 0.011)

Low noise

38 dB

Rated voltage	3VDC, 5VDC, 12VDC, 24VDC
Life	100 million cycles
Response time	under 10 m/sec

Note) Prototype. Contact SMC for details.

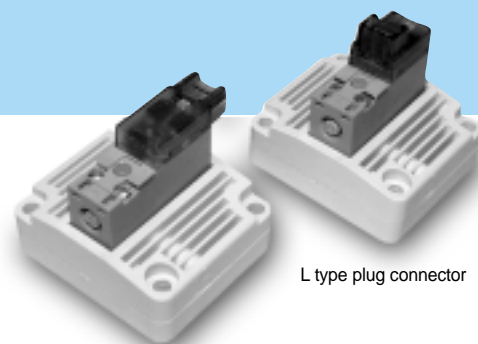
2 Port Oxygen concentrator valve

Series *DXT474*

Diaphragm Valve

The DXT474 diaphragm was developed as an operating valve for an oxygen concentrator application for the medical industry, but it can be a valuable solution for applications that require a low pressure 2 port valve that has a high reliability and life.

- There are no sliding parts in the valve (ex: spool, pistons, etc.), so the valve is able to function continuously and reliably at low pressure.
- The sealing function is performed by diaphragm. Therefore, the valve is non-lubricated for applications that are sensitive to lubrication.
- Except for the SY100 pilot valve, fluorine rubber seals (Viton) are used to aid in protection against ozone.
- SY 100 used for pilot valve to provide low power consumption.
- Simple structure allows for compactness (12 mm height without pilot valve) and high flow (max. Cv 1.3).
- Normally open and normally closed type valves are available.
- Air operated type valves available for applications where two or more valves are to be shifted by one pilot valve.
- Manifold mounted to aid in many types of manifold interfaces and flow requirements. Currently, two type of manifold designs are available (side ported and top ported type) for oxygen concentrator.
- Pilot exhaust is routed to main system exhaust to reduce noise.



L type plug connector

M type plug connector



Manifold assembly
(Side ported type)

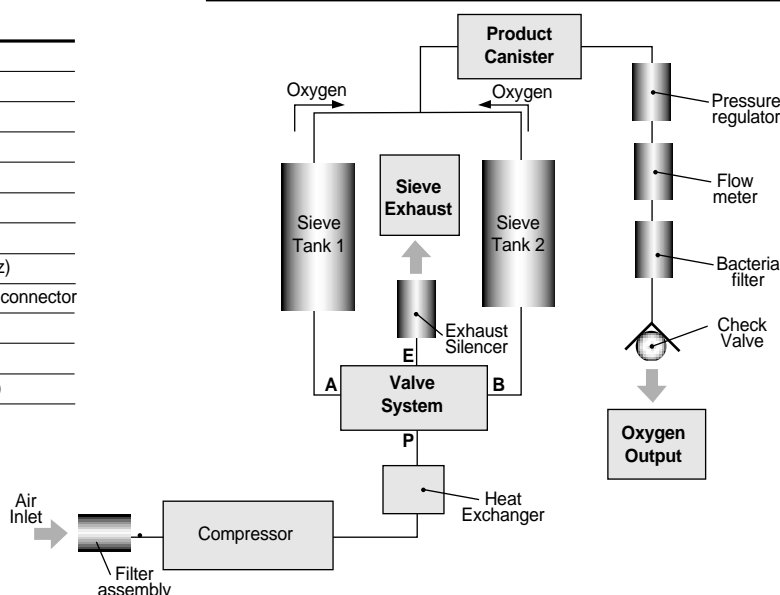


Manifold assembly
(Top ported type)

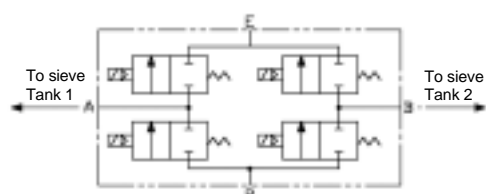
Valve Specifications

Fluid	Air
Operating pressure range MPa (psi)	0.04~0.3 (6~43)
Effective area mm ² (Cv)	Max. 23.4 (1.3)
Response time (ms)	Less than 30
Fluid and ambient temperature (°C)	Max. 50
Max. operating frequency (Hz)	5
Lubrication	Not required
Impact/Vibration m/s ²	150/30 (8.3 - 2000Hz)
Electrical Entry	Grommet, L and M type plug connector
Coil rated voltage VDC	24, 12, 6, 5, 3
Allowable voltage	-10 to +10%
Power consumption (W)	0.5 (with light: 0.55)

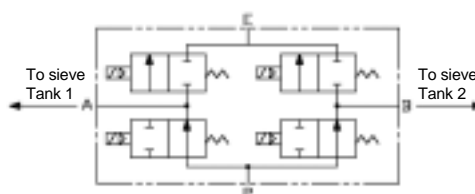
Oxygen concentrator system



Valve System circuit



Valve system circuit: N.C. supply and exhaust



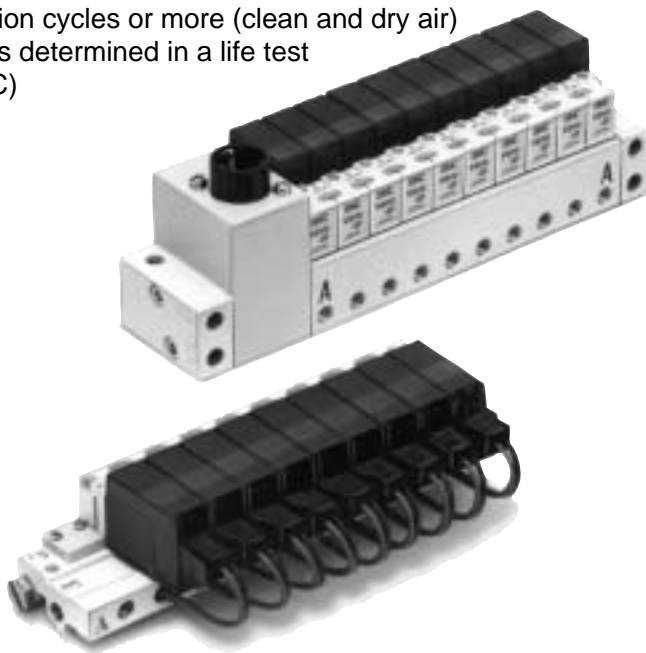
Valve system circuit: N.O. supply and N.C. exhaust

3 Port Solenoid Valve for Air

Series VQ100

Unprecedented high speed, stable response, and extra-long service life.

ON: 3.5ms, OFF: 2ms, Dispension accuracy ± 1 ms
(With indicator light and surge voltage suppressor;
supply pressure 0.5MPa)
200million cycles or more (clean and dry air)
(Factors determined in a life test
by SMC)



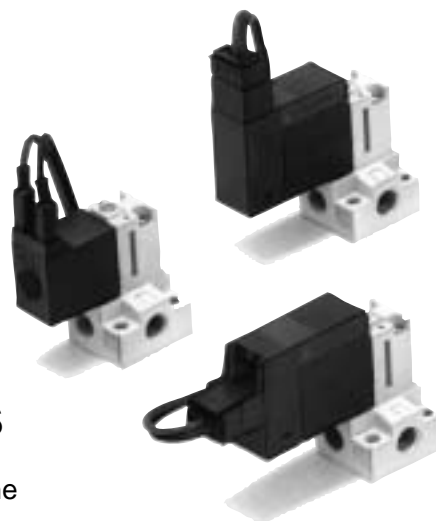
Compact with large flow capacity.

Body width: 9.8mm,
N/min: 19.63 (Standard, high pressure style)
N/min: 39.26 (Option, large flow style)

Options

External non-leak
Latching style
Negative COM specifications
AC voltage
Normally open
Vacuum ⁽¹⁾

Note 1) Consult SMC for vacuum specifications.

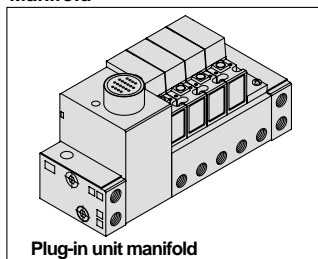


Copper-free specifications

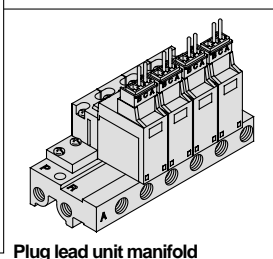
The fluid contacting section is copper-free and the
standard style can be used as it is.

A wide variation of wiring

Manifold

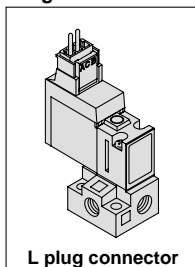


Plug-in unit manifold

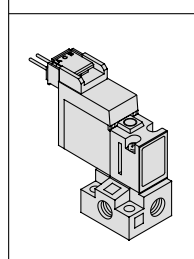


Plug lead unit manifold

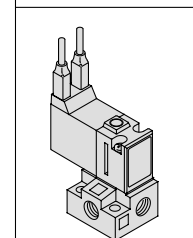
Single unit



L plug connector



M plug connector



Grommet

3 Port Solenoid Valve for Air

Series SY100

Low power consumption: 0.5W (Standard, Without light)
(Current draw: 21mA at 24V DC)

*Large flow capacity style: 0.75W (Current draw: 31mA at 24V DC)

Body width: 10mm

7.85 N/min (Standard style)

11.78 N/min (Large flow capacity style)

Exceedingly long life

100 million cycles (By SMC life test data)



Vacuum Applications Possible

Can be used up to -100kPa

Copper free

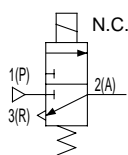
No copper used for sections in contact with fluids.

Bright colour tone and "state of the art" design

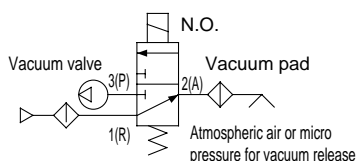
A bright grey concept has been adopted for this product to complement the surrounding operational environment.

SY100/ Application example (Pneumatic symbols shown are typical examples.)

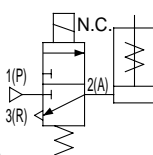
① Valve for blow off



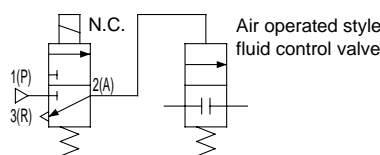
② Valve for vacuum



③ Operation for single acting cylinder



④ Operation for air operated style fluid control valve



Multi-purpose Valve

Series VCA



Direct Operated 2 Port Solenoid Valve for Air

Improved durability (Nearly twice the life of the previous series)

Operating resistance of moving parts reduced for improved longevity and wear resistance.

**High flow rate: Cv factor
0.33 to 2.11**

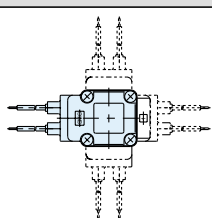
**Compact: Single valve volume reduced 13% (Class 2)
Weight reduced 25% (Class 2)
Manifold length reduced 22% (Class 1: 5 stations)
(Compared to previous series)**

Built-in surge voltage suppressor

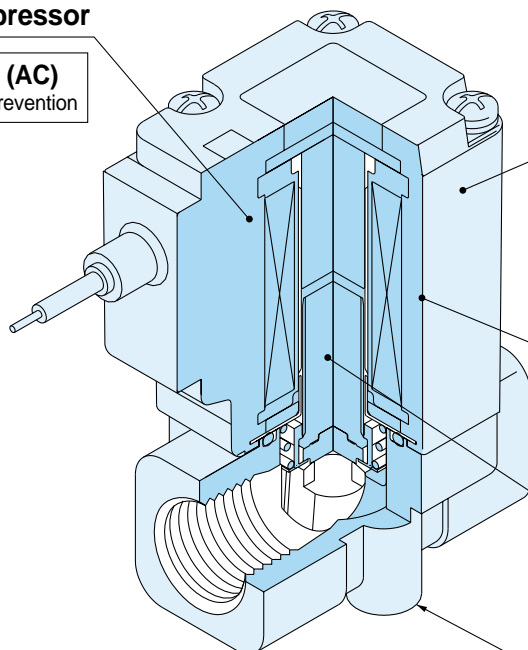
Built-in rectifying circuit (AC)
• Noise prevention • Burn-out prevention

Electrical entry directions

Electrical entry is possible from four directions



* When shipped from the factory, the electrical entry is on the IN port side.



Miniaturised coil Size and weight reduced

New compact coil reduces the size and weight of the valve

Volume : -13% } Compared to previous series (Class 2)
Weight : -25%

Flame resistance UL94 V-0 standard

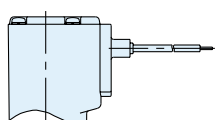
Special construction reduces operating resistance

A variety of wiring variations

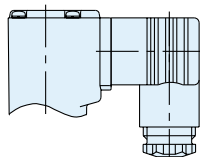
Grommet, DIN connector,
Conduit, Conduit terminal

Wiring specifications (Class B coil)

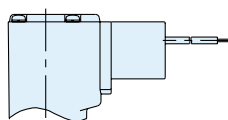
Wiring variations



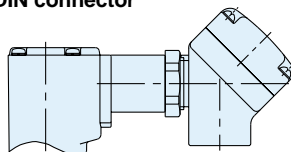
Grommet



DIN connector



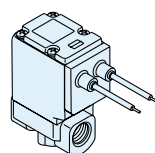
Conduit



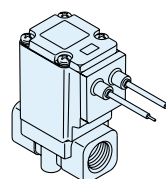
Conduit terminal

Enclosure: Dust-proof & splash-proof (IP65 equivalent)

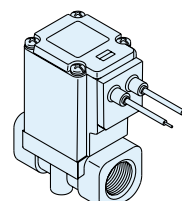
Three compact sizes available



VCA20
Class 2



VCA30
Class 3



VCA40
Class 4

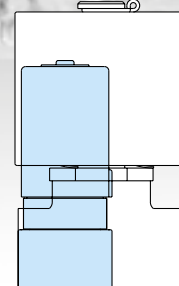
Compact Direct Operated 2/3 Port Solenoid Valve

Series **VDW**

For **Water and Air**



- **Compact (compared to series VX)**
Single valve volume: Reduced 75% (VDW20)
Manifold length: Reduced 18% (VDW30, 7 stations)
- **Light weight (compared to series VX)**
100g: Reduced approx. 50% (for orifice size equivalent to $\varnothing 2$)



Improved durability (nearly twice the life of the previous series)

The use of a unique magnetic material reduces the operating resistance of moving parts, while improving service life, wear and corrosion resistance.

Improved corrosion resistance
Special material introduced

High flow rate: Cv factor
0.03 to 0.44 (2 port)

Universal porting
VDW200/300 (3 port)

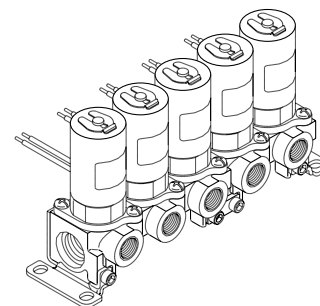
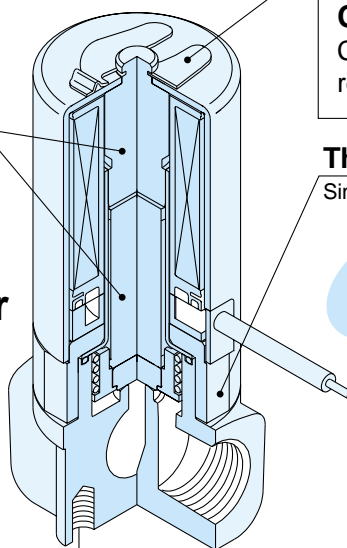
Bottom mounting threads
Mounting bracket also available

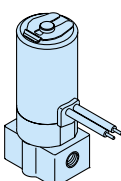
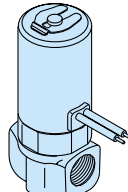
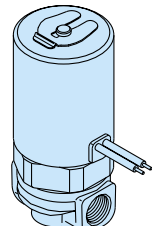
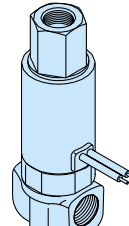
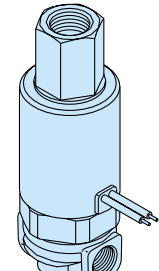
Clip type

Quick change coils
Clip design makes coil replacement easy (2 port)

Threaded assembly
Simplifies maintenance

Brass/Stainless steel manifolds added to series (2 port)



Series of compact designs					
2 port			3 port		
$\varnothing 17$	$\varnothing 20.5$	$\varnothing 28$	$\varnothing 20.5$	$\varnothing 28$	
					
VDW10	VDW20	VDW30	VDW200	VDW300	

Multi-purpose Valve

Series VCW

Direct Operated 2 Port Solenoid Valve for Water

Improved durability

(SMC comparison: Twice the life of previous series)

The internal wear of moving parts has been reduced through the use of a unique magnetic material. Service life, durability and corrosion resistance have been increased.

Large flow rate:

Cv factor 0.16 to 2.1

Smaller size: Single valve –15% reduction in volume (Class 2)

Manifold length – Reduced by 18%

(Class 3 : 7 stations) (SMC comparison)

Internal surge voltage suppressor

Internal rectifier circuit (AC)

- AC/DC switchover is possible by simply changing the coil
- Reduced noise

Miniaturised coil

Size and weight reduced

New compact coil reduces the overall size & weight of the valve

Volume –15% } SMC comparison
Weight –20% } (Class 2)

Improved corrosion resistance

Special materials introduced

Clip type

Quick change coils

Clip design makes coil replacement easy

Incombustibility UL94

Conforms to V-0

Threaded assembly

Simplifies maintenance

Bottom mounting threads

Mounting bracket also available

A variety of wiring options

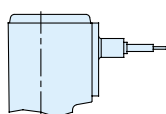
Grommet, DIN connector, Conduit, Conduit terminal

Enclosure:

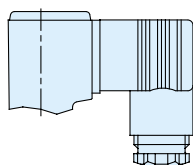
Splash-proof (equivalent to IP65)

Wiring specifications

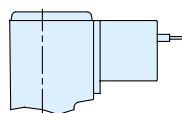
Wiring variations



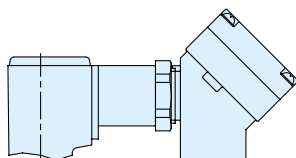
Grommet



DIN connector

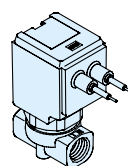


Conduit

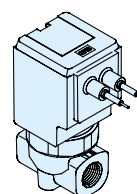


Conduit terminal

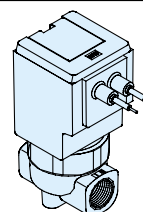
3 sizes available



VCW2
Class 2



VCW3
Class 3

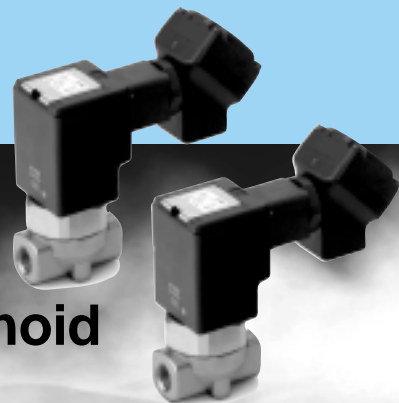


VCW4
Class 4

Multi-purpose Valve

Series VCB

Direct Operated 2 Port Solenoid Valve for Heated Water

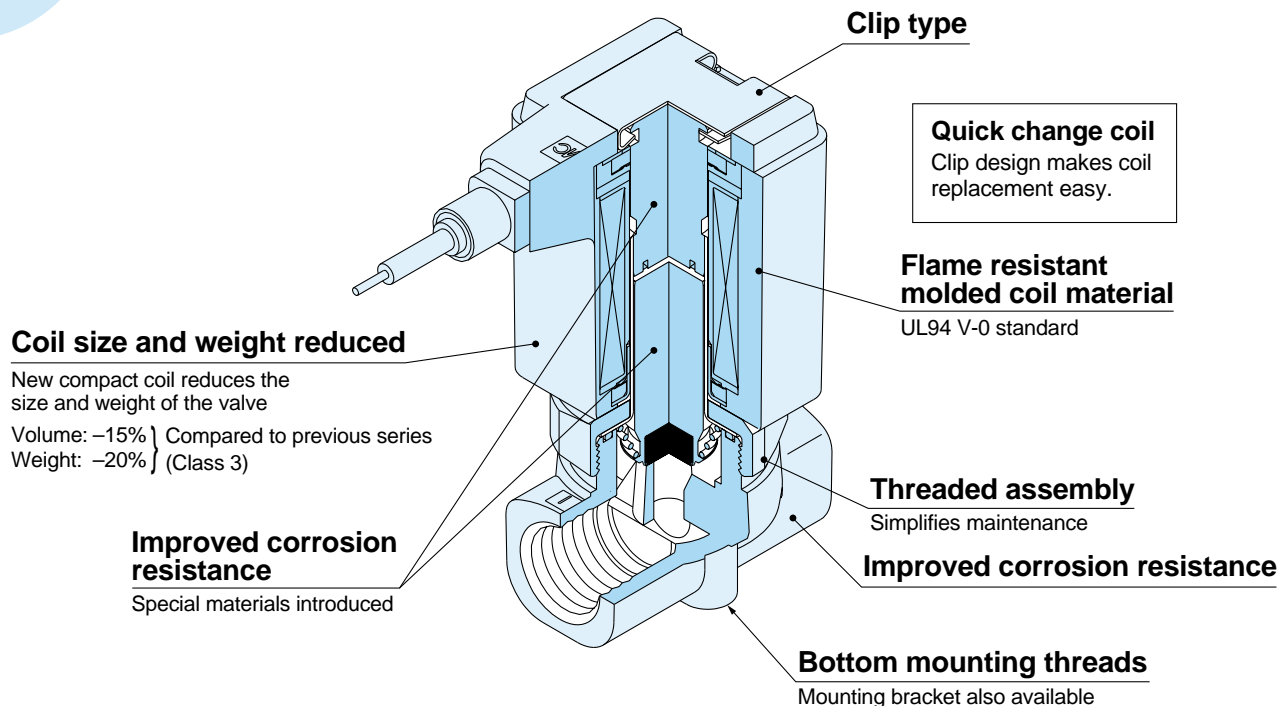


Improved durability (Nearly twice the life of the previous series)

Use of special magnetic material reduces the operating resistance of moving parts. Longevity, wear resistance and corrosion resistance improved.

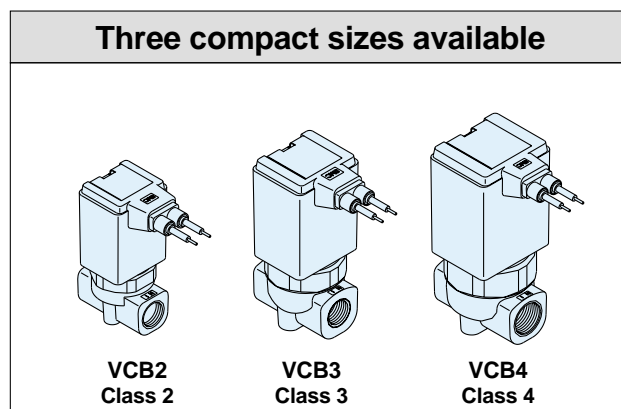
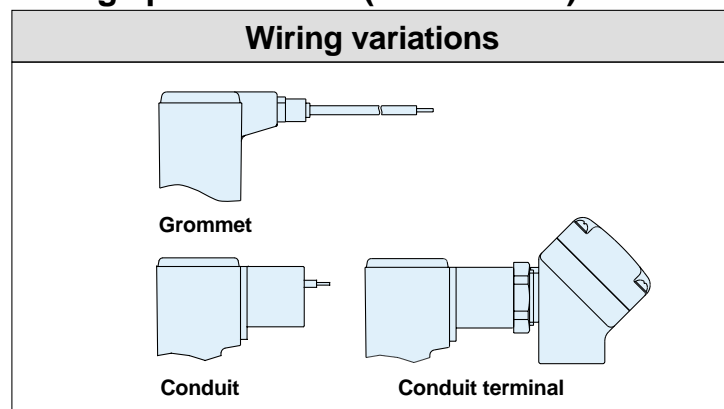
High flow rate: Cv factor 0.16 to 2.1

Compact: Single valve volume reduced 15% (Class 3)



Enclosure: Dust-proof & splash-proof (IP65 equivalent)

Wiring specifications (Class H coil)



Multi-purpose Valve

Series VCS

Direct Operated 2 Port Solenoid Valve for Steam



Improved durability

(nearly twice the life of the previous series)

The internal resistance of moving parts has been reduced through the use of a unique magnetic material.

Service life, durability and corrosion resistance have been increased.

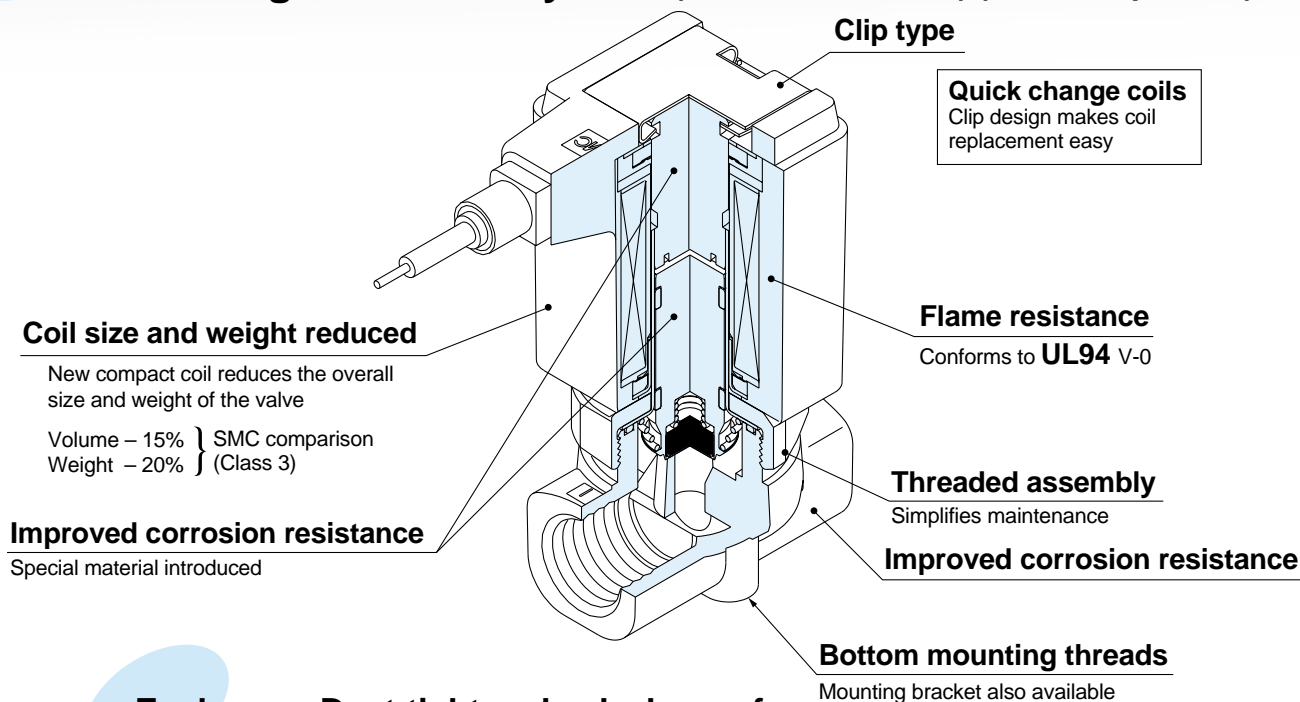
High flow rate:

Cv factor 0.16 to 2.1

Smaller size:

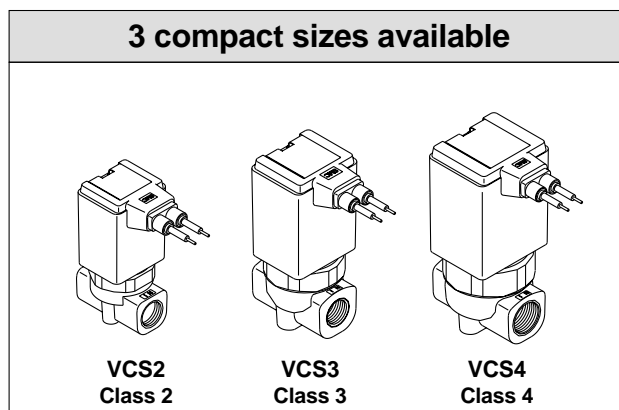
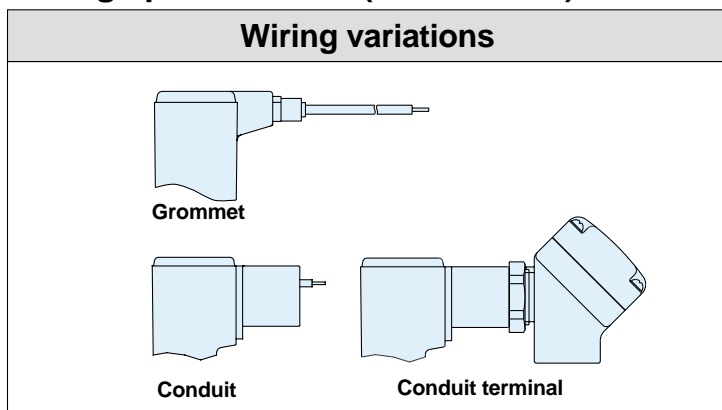
Single valve volume reduced by 15% (Class 3)

Manifold length reduced by 18% (Class 3: 5 stations) (SMC comparison)



Enclosure: Dust-tight and splash proof
(equivalent to IP65)

Wiring specifications (Class H coil)



Membrane Air Dryer

Series *IDG*

NEW specifications for 25ℓ/min (ANR) and -60°C outlet air atmospheric pressure dew point added to series IDG!

Dew point indicator confirms air drying at a glance

(except IDG1)
(optional on IDG3, IDG5, IDG3H, IDG5H)

- Compact
- Lightweight
- Space saving

Also available with fittings for purge air discharge

When purge air discharge is undesirable in the area around the membrane air dryer, it can be discharged to atmosphere via tubing (optional).

Discharged air noise reduced with built-in silencer

(Except IDG1, IDG3, IDG3H, IDG5, IDG5H, IDG30, IDG30H, IDG30L, IDG50, IDG50H, IDG50L)

Dew point indicator



Purge air discharge fitting for dew point indicator



Purge air discharge fitting for dehumidification



Environmentally friendly (non-freon)

Power supply not required

A power supply is completely unnecessary. Wiring labour is not required and there is no need to consider electrical standards, etc.

No vibration or heat discharge

There are no mechanical moving parts as in the case of refrigeration equipment.

Compatible with low dew points

Outlet air atmospheric pressure dew point -40°C (IDG30L, IDG50L, IDG60L, IDG75L, IDG100L)

Outlet air atmospheric pressure dew point -60°C (IDG60S, IDG75S, IDG100S)

Unit style Integrated pre-filter and regulator



IDG1

Flexible piping is possible

Low flow rate type tube configuration

Outlet air flow rate: 10ℓ/min (ANR)



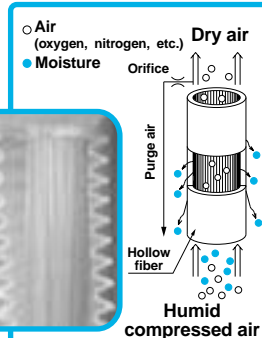
M type

Mist separator + Micro mist separator + IDG
Micro mist separator with pre-filter + IDG

V type

Mist separator + Micro mist separator + IDG + Regulator
Micro mist separator with pre-filter + IDG + Regulator

Dehumidification principle



The membrane air dryer uses hollow fibres composed of a macro molecular membrane through which moisture passes easily, but is difficult for air (oxygen and nitrogen) to pass through.

When humid, compressed air is supplied to the inside of the hollow fibres, only moisture permeates the membrane and moves to the outside due to the pressure difference between the moisture inside and outside of the fibres. The compressed air becomes dry air and continues out of the dryer. Part of the dry air from the outlet side is passed through a very small orifice to reduce the pressure and purge the outside of the hollow fibres. The moisture which permeated to the outside of the hollow fibres is discharged to the atmosphere by this purge air. In this way, the partial pressure outside of the hollow fibres remains low and dehumidification is continuously performed.

Applications

- Machine tools (air bearings, lasers, etc.)
- Precision measuring equipment (3-D measuring machines)
- Semiconductor manufacturing equipment
- Semiconductor inspection equipment
- Dental equipment
- Chemical analysis equipment
- Ozonizers, Hydrogen gas generating equipment
- Packaging machines, Paper making machines, Food processing machines
- Printed circuit board IC mounting machines
- Fine particle drying, Transfer equipment
- Electrostatic and high grade coating
- Drying and cleaning of precision parts
- Condensation prevention in control panels
- General pneumatic equipment and pneumatic tools

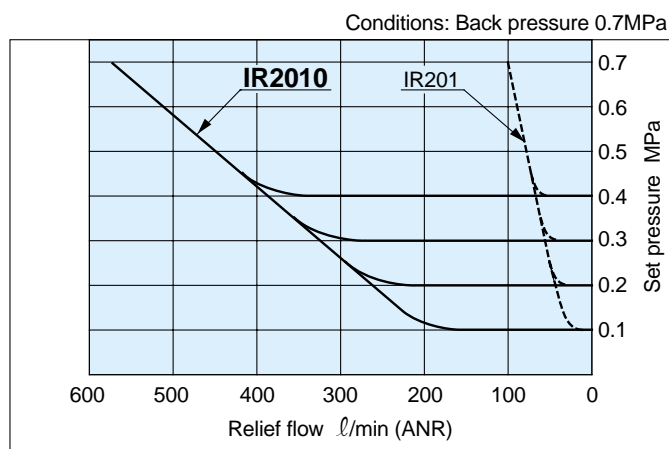
Precision Regulator

Series *IR1000/2000/3000*

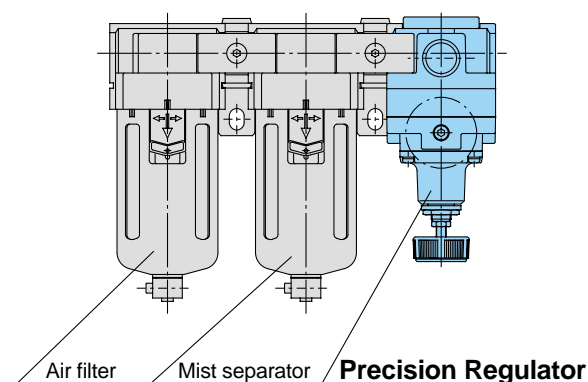
Small size: Series IR1000,

Large size: Series IR3000 newly released

- Smallest size in series
IR1000: Width 35mm, Weight 140g
- Expanded regulating pressure range
Conventional 0.7MPa→0.8MPa
- Relief flow increased by 5 times
(Compared to SMC IR201, 401)



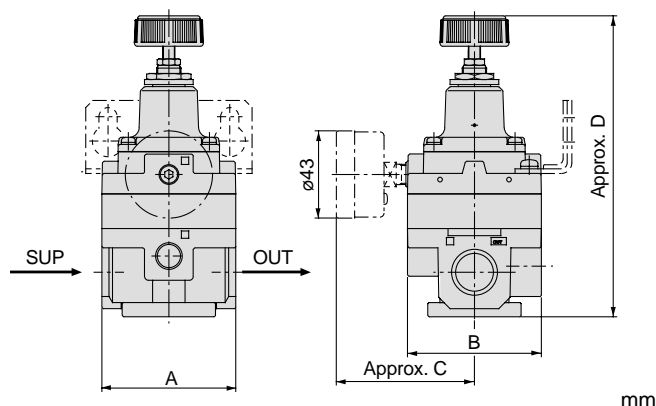
- Modular body introduced: Can be combined with AF (air filter) and AFM (mist separator)



Series Variations

Model		IR1000	IR2000	IR3000
Maximum set pressure	0.2MPa	●	●	●
	0.4MPa	●	●	●
	0.8MPa	●	●	●
Port size	Rc(PT) 1/8	●		●
	Rc(PT) 1/4		●	●
	Rc(PT) 3/8			●
	Rc(PT) 1/2			●
Accessories	Bracket	●	●	●
	Pressure gauge	●	●	●
Air operated type			●	●

Dimensions



Model	A	B	C	D
IR1000	35	35	43	90
IR3000	66	66	68	148

Order Made Specifications

Symbol	Specifications/Content
10—	Clean room specifications
20—	Copper-free specifications
80—	Ozone resistant specifications
—T	For high temperature
—L	For low temperature
—X1	Non-grease specifications
IRM□□	Manifold (except series IR2120, IR3000)

Precision Clean Regulator

Series *SRP*

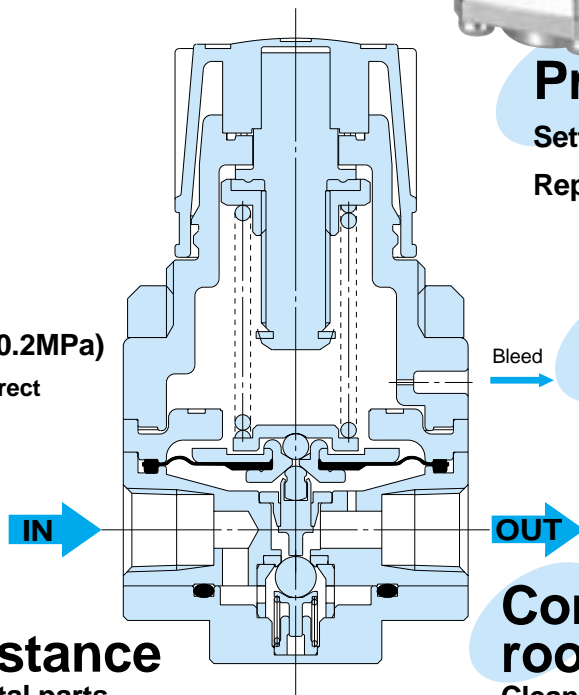
High precision,
low flow consumption
stainless steel regulator



Achieves flow consumption "under a litre"

Bleed volume
0.5 l/min(ANR) or less
(downstream pressure at 0.2MPa)

* Approx. 1/4 of the ARP3000 direct operated precision regulator



Precision

Setting sensitivity: 0.3%F.S.

Repeatability: 1%F.S.

Oil free

Parts composition with no use of oils.

HFC1416 ultrasonic cleaning of all fluid-contact parts.

Excellent corrosion resistance

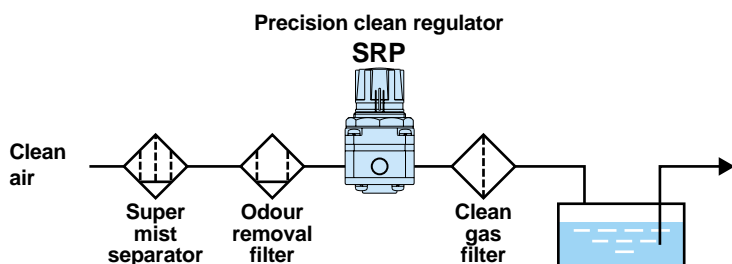
SUS316 is used for all metal parts in contact with the fluid.

Consistent clean room production

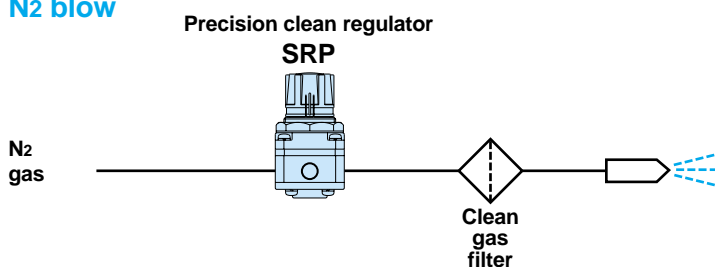
Cleaned, assembled, inspected, and sealed in double packaging in a Class 10,000 environment

Applications

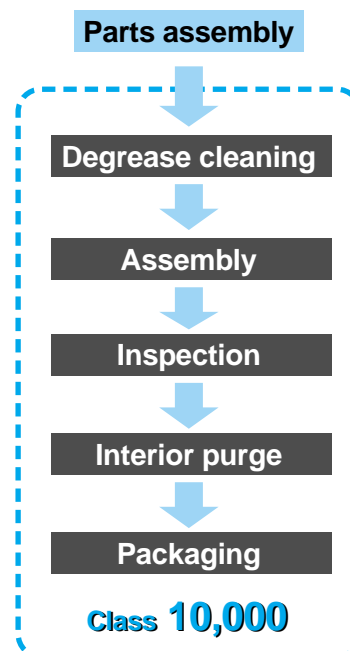
Pressure feed of chemicals



N₂ blow















Manufacturing process



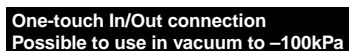
Pressure Control Equipment Regulator

Series AR

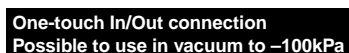
Regulator

Series	Application/Characteristics	Port size	Set pressure (MPa)	
Miniature regulator ARJ1020F	Direct operated relieving style Back flow function	M5	0.1 to 0.7	
Miniature regulator ARJ210	Direct operated relieving style	M5 to 1/8	0.2 to 0.7	
Miniature regulator ARJ310	Direct operated relieving style	M5 to 1/8	0.2 to 0.7	
Regulator AR1000-6000	Direct operated relieving style Modular style	M5 1/8 to 1	0.05 to 0.7 0.05 to 0.85	
Regulator with integral pressure gauge AR2001-4001	Built-in pressure gauge Space saving	1/8 to 1/2	0.05 to 0.85	
Pilot operated regulator AR425-925 AR435-935	Internal pilot Relieving style	1/4 to 2	0.05 to 0.85 0.02 to 0.2	
Regulator manifold ARM1000/2000	Manifold (Common IN/Individual IN) Direct operated relieving style Back flow function	1/8 to 1/4	0.08 to 0.7	
Regulator manifold ARM2500/3000	Manifold (Common IN/Individual IN) Modular style	1/4, 3/8	0.05 to 0.85	
Direct operated precision regulator ARP3000	Setting sensitivity: 0.001MPa Direct operated relieving style	1/4	0.005 to 0.3	
Regulator with check valve AR1000/AR2060-6060	Built-in check valve (with back flow function) Direct operated relieving style	M5 to 1	0.05 to 0.7	
Regulator with residual pressure exhaust mechanism AR2550-4050	Exhaust of residual pressure for safety purpose Direct operated relieving style	1/4 to 3/4	0.05 to 0.85	
Regulator for 2MPa ARX20	Piston type regulator	1/8, 1/4	0.05 to 0.85	

General purpose fitting Series



Applicable tube Metric size



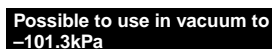
Applicable tube Metric size



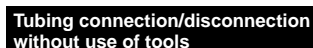
Applicable tube Metric size



Applicable tube Metric size



Applicable tube Metric size



Applicable tube Metric size



Nylon
Soft nylon
polyurethane

Nylon
Soft nylon
Polyurethane

Nylon
Soft nylon
Polyurethane

Nylon
Soft nylon
Polyurethane

Nylon
Soft nylon
Polyurethane

Nylon
Soft nylon
Polyurethane

Nylon
Soft nylon
Soft copper
(C1220T-0)

ø3.2 ø4 ø6 ø8 ø10 ø12 ø16

W/ sealant

Figure 1 consists of 10 horizontal bar charts, each representing a different value of the parameter a (1/8, 1/4, 3/8, 1/2, 1, 2, 4, 8, 16, 32). Each chart displays the distribution of 1000 simulated data points across 10 categories: M3, M5, 1/8, Unions, M6, 1/4, 3/8, 1/2, ø8, ø10, and ø12. The x-axis for each chart represents the number of data points, ranging from 0 to 1000. The y-axis lists the categories. The charts show that as a increases, the distribution becomes more concentrated in the 'Unions' category, with fewer points in the other categories.

General Purpose Fitting Series

One-touch In/Out connection
With quick disconnect and air lock

Self-seal Fittings Series KC

Applicable tube Metric size



Applicable
tube
material

Nylon
Soft nylon
Polyurethane

Applicable tube O.D.
(mm)

ø3.2 ø4 ø6 ø8 ø10 ø12 ø16

	ø3.2	ø4	ø6	ø8	ø10	ø12	ø16	W/ sealant	Electroless nickel plated
M5	•	•	•	•	•	•	•	•	•
1/8	•	•	•	•	•	•	•	•	•
1/4	•	•	•	•	•	•	•	•	•
3/8	•	•	•	•	•	•	•	•	•
1/2	•	•	•	•	•	•	•	•	•
Unions	•	•	•	•	•	•	•	•	•

Multi tube, One-touch In/Out connection

Multi-connector Series DM

Applicable tube Metric size



Nylon
Soft nylon
Polyurethane

	ø3.2	ø4	ø6	ø8	ø10	ø12	ø16	W/ sealant	Electroless nickel plated
6 tubes	•	•	•	•	•	•	•	•	•
12 tubes	•	•	•	•	•	•	•	•	•

Rectangular Multi-connector Series KDM

Applicable tube Metric size



Nylon
Soft nylon
Polyurethane

	ø3.2	ø4	ø6	ø8	ø10	ø12	ø16	W/ sealant	Electroless nickel plated
10 tubes	•	•	•	•	•	•	•	•	•
20 tubes	•	•	•	•	•	•	•	•	•

Centralized distribution of supply air

Piping Module Series KB

Applicable tube Metric size



Nylon
Soft nylon
Polyurethane

	ø3.2	ø4	ø6	ø8	ø10	ø12	ø16	W/ sealant	Electroless nickel plated
M5	•	•	•	•	•	•	•	•	•

S Couplers Series KK/KK13



Fitting Series For Special Environments

One-touch In/Out connection
For use in corrosive environments
Stainless series

One-touch Fittings Series KG

Applicable tube Metric size



Applicable
tube
material

Nylon
Soft nylon
Polyurethane

Applicable tube O.D.
(mm)

ø3.2 ø4 ø6 ø8 ø10 ø12 ø16

	ø3.2	ø4	ø6	ø8	ø10	ø12	ø16	W/ sealant	Electroless nickel plated	Sprayer proof
M5	•	•	•	•	•	•	•	•	•	•
1/8	•	•	•	•	•	•	•	•	•	•
1/4	•	•	•	•	•	•	•	•	•	•
3/8	•	•	•	•	•	•	•	•	•	•
1/2	•	•	•	•	•	•	•	•	•	•
Unions	•	•	•	•	•	•	•	•	•	•

One-touch In/Out connection
For use in corrosive environments
Stainless steel (SUS316)

Miniature Fittings Series MS

Applicable tube Metric size



Nylon
Soft nylon
Polyurethane

	ø3.2	ø4	ø6	ø8	ø10	ø12	ø16	W/ sealant	Electroless nickel plated	Sprayer proof
M5	•	•	•	•	•	•	•	•	•	•

Air Fittings & Tubing

Inch-size One-touch Fittings

One-touch Inch-size tubing/UNF, NPT thread connection
Possible to use in vacuum to -100kPa

One-touch Mini Series KJ

Applicable area — U.S.A. etc.



One-touch Inch-size tubing/UNF, NPT thread connection
Possible to use in vacuum to -100kPa

One-touch Fittings Series KQ2

Applicable area — U.S.A. etc.



One-touch Inch-size tubing/M5, R, Rc thread connection
Possible to use in vacuum to -100kPa

One-touch Fittings Series KQ2

Applicable area — Australia, Japan, etc.



Low-torque rotation for fast swivel
and oscillating applications

Rotary One-touch Fittings Series KS (Standard)

Applicable tube Inch size
Applicable thread — UNF, NPT



One-touch In/Out connection For compact and
concentrated tubing applications

One-touch Fittings Manifold Series KM

Applicable tube Inch size
Applicable thread — NPT



One-touch In/Out connection
Multi-tube connector

Rectangular Multi-connector Series KDM

Applicable tube Inch size



Applicable tube material		Applicable tube O.D. (inch)							W/ sealant	Electroless nickel plated
		$\phi 1/8$	$\phi 5/32$	$\phi 3/16$	$\phi 1/4$	$\phi 5/16$	$\phi 3/8$	$\phi 1/2$		
Nylon Soft nylon Polyurethane	UNF 10-32	●	●	●	●				●	●
	1/16	●	●	●	●				●	●
	1/8	●	●	●	●				●	●
	Unions	●	●	●	●				●	●
Nylon Soft nylon Polyurethane	UNF 10-32	●	●	●	●				●	●
	1/16	●	●	●	●				●	●
	1/8	●	●	●	●	●			●	●
	1/4	●	●	●	●	●	●		●	●
	3/8			●	●	●	●	●	●	●
	1/2				●	●	●	●	●	●
	Unions	●	●	●	●	●	●	●	●	●
Nylon Soft nylon Polyurethane	M5			●	●					
	1/8		●	●	●	●			●	●
	1/4		●	●	●	●	●		●	●
	3/8			●	●	●	●	●	●	●
	1/2				●	●	●	●	●	●
	Unions		●	●	●	●	●	●	●	●
Nylon Soft nylon Polyurethane	UNF 10-32		●						●	●
	1/8		●	●	●	●			●	●
	1/4			●	●	●	●		●	●
	3/8					●	●	●	●	●
Nylon Soft nylon Polyurethane	1/4		●		●					
	3/8				●					
	5/16		●							
	3/8			●						
Nylon Soft nylon Polyurethane	10 tubes	●	●	●	●					
	20 tubes	●	●	●	●					

Tubing

General tubing
1.5MPa max. at 20°C

Nylon Tubing Series T



Slightly flexible
1.0MPa max. at 20°C

Soft Nylon Tubing Series TS



Flexible
0.8MPa max. at 20°C

Polyurethane Tubing Series TU



Extremely flexible
0.6MPa max. at 20°C

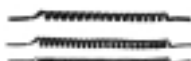
Soft Polyurethane Tubing Series TUS



Hard Polyurethane Tubing Series TUH

For flexibility and moving applications

Polyurethane Coil Tubing Series TCU



For flexible multi-tube applications

Polyurethane Flat Tubing Series TFU



Color	Tube O.D.									
	Metric sizes (mm)					Inch sizes (inch)				
	ø4 (ø3/32)	ø6 (ø1/8)	ø8 (ø5/16)	ø10 (ø3/8)	ø12 (ø1/2)	ø16	ø1/8 (ø3.2)	ø3/16	ø1/4	ø3/8 ø1/2
Black	•	•	•	•	•	•	•	•	•	•
White	•	•	•	•	•	•	•	•	•	•
Red	•	•	•	•	•	•	•	•	•	•
Blue	•	•	•	•	•	•	•	•	•	•
Yellow	•	•	•	•	•	•	•	•	•	•
Green	•	•	•	•	•	•	•	•	•	•
Black	•	•	•	•	•	•	•	•	•	•
White	•	•	•	•	•	•	•	•	•	•
Red	•	•	•	•	•	•	•	•	•	•
Blue	•	•	•	•	•	•	•	•	•	•
Yellow	•	•	•	•	•	•	•	•	•	•
Green	•	•	•	•	•	•	•	•	•	•
Clear	•	•	•	•	•	•	•	•	•	•
Orange	•	•	•	•	•	•	•	•	•	•
Black	•	•	•	•	•	•	•	•	•	•
White	•	•	•	•	•	•	•	•	•	•
Red	•	•	•	•	•	•	•	•	•	•
Blue	•	•	•	•	•	•	•	•	•	•
Yellow	•	•	•	•	•	•	•	•	•	•
Green	•	•	•	•	•	•	•	•	•	•
Opaque	•	•	•	•	•	•	•	•	•	•
Yellow brown	•	•	•	•	•	•	•	•	•	•
1 tube	•	•	•	•	•	•	•	•	•	•
2 tubes	•	•	•	•	•	•	•	•	•	•
3 tubes	•	•	•	•	•	•	•	•	•	•
2 tubes	•	•	•	•	•	•	•	•	•	•
3 tubes	•	•	•	•	•	•	•	•	•	•

High Purity Series

High Purity Fluororesin Fitting Series LQ



High Purity Fluoropolymer Tubing Series TL/TIL



Clean Room

Clean One-Touch Fittings Series KP/KPQ/KPG







Clean One-Touch Tubing Series TPH/TPS



Air filter/Modular Style

Series AF

Air Filter Series AF 	Model	Port size	Filtration μm	Accessories
	AF1000	M5 x 0.8	5	Bracket Float style auto drain Pressure differential auto-drain
	AF2000	1/8, 1/4		
	AF3000	1/4, 3/8		
	AF4000	1/4, 3/8, 1/2		
	AF4000-06	3/4		
	AF5000	3/4, 1		
	AF6000	1		
Mist Separator Series AFM 	AFM2000	1/8, 1/4	0.3	Bracket Float style auto drain Pressure differential auto-drain
	AFM3000	1/4, 3/8		
	AFM4000	1/4, 3/8, 1/2		
	AFM4000-06	3/4		
Micro Mist Separator Series AFD 	AFD2000	1/8, 1/4	0.01	Bracket Float style auto drain Pressure differential auto-drain
	AFD3000	1/4, 3/8		
	AFD4000	1/4, 3/8, 1/2		
	AFD4000-06	3/4		

Large Flow Air Filter Series AF 	Model	Port size	Filtration μm	Accessories
	AF800	1 1/4, 1 1/2	5	Float style auto drain
	AF900	2		

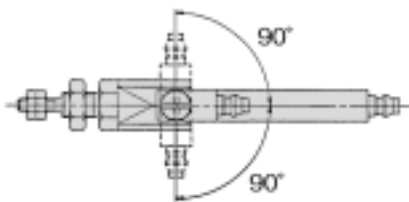
Pin Cylinder

Series CJ

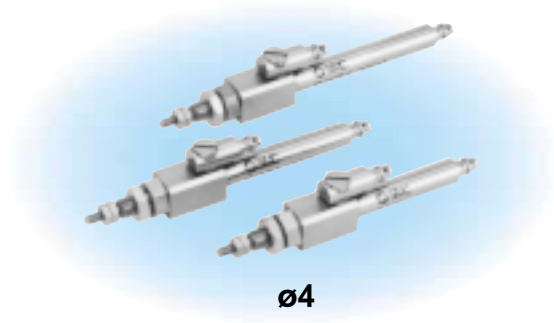
Double Acting/Single Acting Spring Return

The fitting on the rod cover side has been provided with a variable piping direction.

(The piping direction of the fitting on the rod cover side can move freely within a range of ±90°.)




ø2.5, ø4



ø4

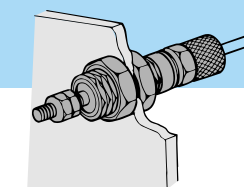
Variations

Series	Action		Bore size (mm)	Standard stroke (mm)
Series CJ1 	Double acting	Single rod	4	5, 10, 15, 20
	Single acting	Single rod Spring return	2.5	5, 10
			4	5, 10, 15, 20

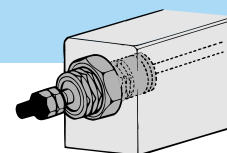
Miniature Cylinder

Series CJP

Double Acting/Single Acting Spring Return




Panel Mounting Style

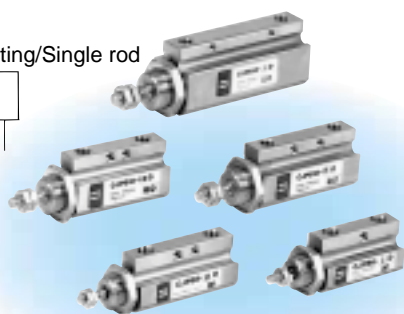
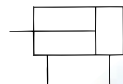


Plug Mounting Style

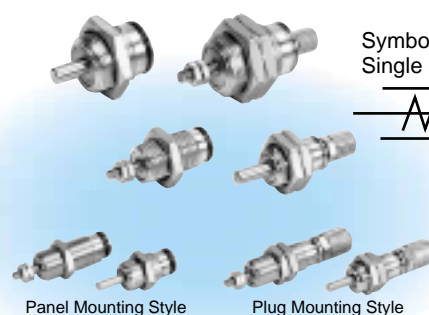
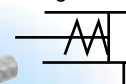
Variations. Series CJP

Series	Action		Standard Variation	Bore Size (mm)	Standard Stroke (mm)
			Built-in Magnet		
Series CJP 	Double Acting (Non-lube)	Single Rod	●	6	$\phi 6$ — 5,10,15,20 $\phi 10,15$ — 5,10,15,20,(25),30
	Single Acting (Non-lube)	Single Rod Spring return		10 15	
					5/10/15

Symbol
Double acting/Single rod



Symbol
Single acting/Spring Return

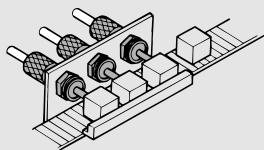


Panel Mounting Style

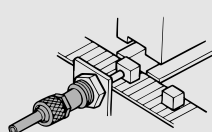
Plug Mounting Style

Application Examples

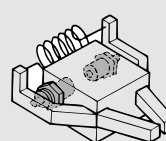
Clamper



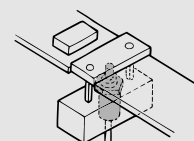
Ejector



Gripper



Stopper

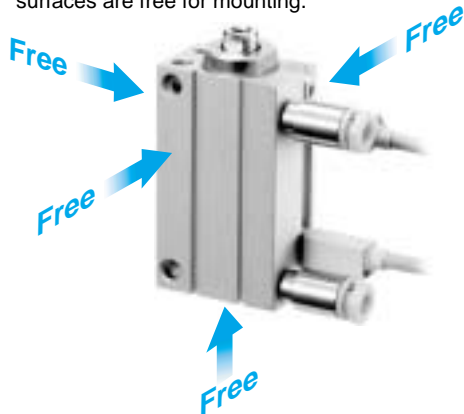


Free-mount Cylinder

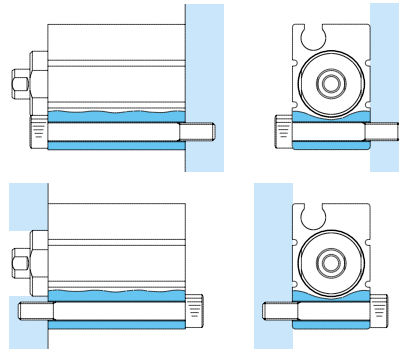
Series CUJ $\varnothing 4, \varnothing 6, \varnothing 8, \varnothing 10$

Concentrates wiring and piping on one surface

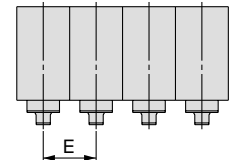
Allows more efficient installation, since four surfaces are free for mounting.



Free-mount design allows installation from four directions.



Fine pitch mounting is possible.

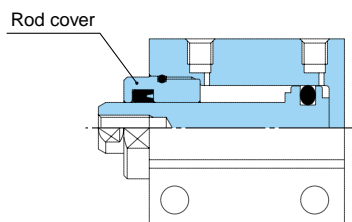


Pitch dimensions (without magnet) (mm)

Bore Size	E
4	10
6	13
8	13
10	13.5

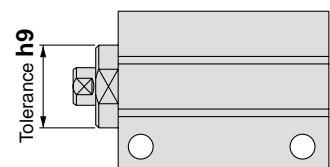
Easy seal replacement

Seals can be replaced easily by removing rod cover.

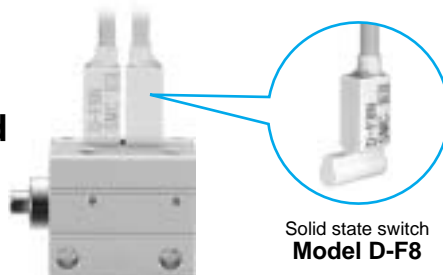


With front boss (h9)

Centering can be done easily.



Two auto switches can be installed even for 4mm strokes.



Solid state switch
Model D-F8

Clean room series Series 10-, 11-CUJ



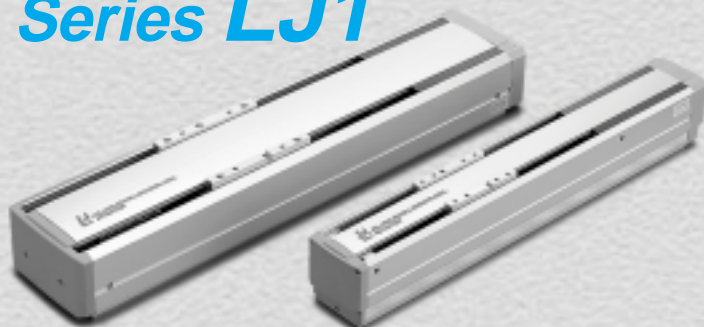
Series Variations

Series	Bore size (mm)	Action	Stroke (mm)						Clean room series	Auto switch	Rod end configuration
			4	6	8	10	15	20			
CUJ	4	Double acting	•	•	•	•				Nil	Male thread Without thread
		Single acting (spring return)	•	•	•	•					
	6	Double acting	•	•	•	•	•		•	Solid state switch D-F8 <input type="checkbox"/> D-F9 <input type="checkbox"/>	Female thread Male thread
		Single acting (spring return)	•	•	•	•					
	8	Double acting	•	•	•	•	•	•	•		
		Single acting (spring return)	•	•	•	•					
	10	Double acting	•	•	•	•	•	•	•		
		Single acting (spring return)	•	•	•	•					

Two types of guide and three types of feed screw

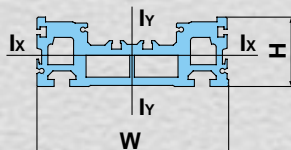
Single Axis Electric Actuator

Series LJ1



● High rigidity

High rigidity achieved by the use of a hollow box type aluminum construction



Model	Sectional secondary moment		W	H
	Ix	Iy		
Linear guide	LJ1H10□□	7	48	70
	LJ1H20□□	40	374	122
	LJ1H30□□	84	836	151
Slider guide	LJ1S10□□	15	52	70
	LJ1S20□□	60	402	122
	LJ1S30□□	177	1000	151

High

Positioning accuracy

Low

Low

Work load/Allowable moment

High

Slider guide	5 to 20kg
High rigidity direct acting guide	10 to 60kg

LJ1H
High rigidity direct acting guide + Ground ball screw

Slide screw	±0.1mm
Rolled ball screw	±0.05mm
Ground ball screw	±0.02mm

LJ1H
High rigidity direct acting guide + Rolled ball screw

LJ1S
Slider guide + Slide screw

LJ1H
High rigidity direct acting guide + Slide screw

● Low noise (slide screw type)

Slide screw + Slider guide: **47dB** (LJ1S)

Slide screw + Linear guide: **53dB** (LJ1H)

Low profile/non-coupling type with reduced height and length

Low Profile Electric Actuator

Series LG1

● Series with coupling available

Mounting of a non-standard motor is possible.

Low profile: **55mm** (35mm less than LJ1H20)



Reduced length (62mm shorter than LJ1H20 with coupling and 300mm stroke)



Controller Series LC1



Teaching box



Regenerative absorption unit Series LC7R



Short stroke type with three guide variations

Short Stroke Electric Actuators

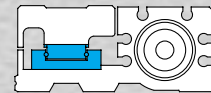
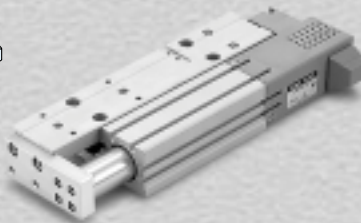
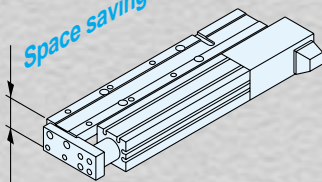
Series LX

Low profile slide table type with stepper motor

Series LXF

Space saving

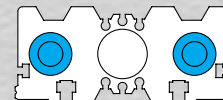
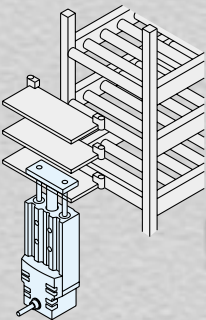
Thickness: 31mm



Guide rod type with stepper motor

Series LXP

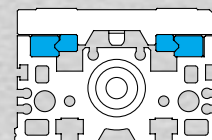
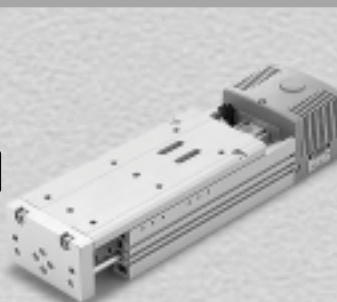
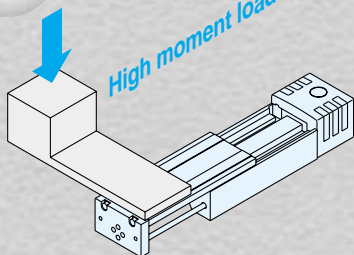
Use as lifter



High rigidity slide table type with stepper motor

Series LXS

High moment load



CE marking
available as standard

AC servomotor specification/Order made

Series LXF

Series LXP

Series LXS



Driver
Series LC6D



Positioning driver
Series LC6C



Teaching box



2-Color Display Type High-Precision Digital Pressure Switch

Series ZSE30/ISE30



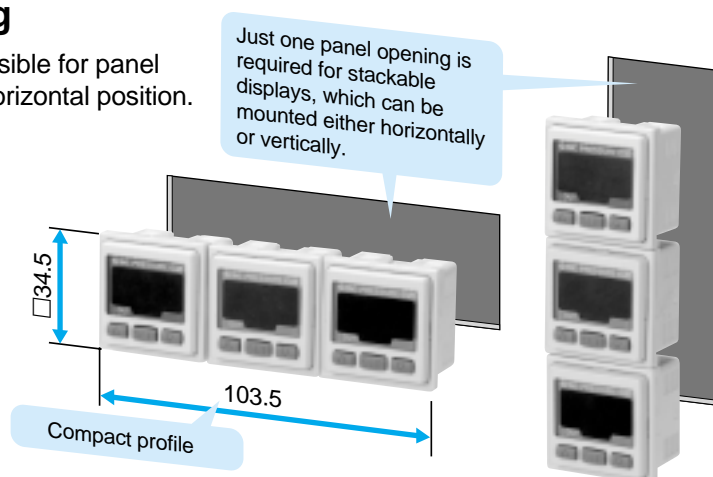
Two colour indication

The following display methods are available in the initial setting mode.

1. One or two colour indication can be selected (one colour can be used).
2. Green to Red or Red to Green indication can be selected.

Tight mounting

Tight mounting is possible for panel mount in vertical or horizontal position.



Setting/Display resolution: 1/1000

Compound pressure: 0.2kPa

Positive pressure: 0.001MPa

Fine adjustment function for display values

When multiple switches of the same model are used, switch unit based display dispersions can be adjusted.

Two types of analogue output

Voltage output: 1 to 5V

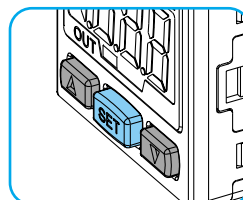
Current output: 4 to 20mA

One-touch connector

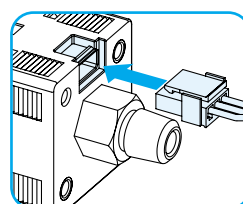
A one-touch connector is used for electrical entry.

Lead wire can be separated from the body.

More user-friendly controls



Raised rubber button controls are clearly set apart, simple to operate, soft to the touch.



Plug-type connectors take the burden out of wiring work and maintenance.

Specifications

	ZSE30F (Compound pressure)	ISE30 (Positive pressure)
Rated pressure range	-100~100kPa	0~1MPa
Set pressure range	-101~101kPa	-0.1~1MPa
Set pressure resolution	0.2kPa	0.001MPa
Applicable fluid	Air, Non-corrosive/Non flammable gas	
Power supply voltage	12~24VDC (With mis-wiring protection)	
Current consumption	35mA or less (At current output:60mA or less)	
Output	Switch output	NPN or PNP (Open collector output 1)
	Voltage output	1~5V±2.5% F.S.
	Current output	4~20mA±2.5% F.S. or less
Repeatability	±0.2% F.S. ±2digit or less	±0.2% F.S. ±1digit or less
response time	2.5ms or less (With anti-chattering function:20ms, 160ms and 640ms selection)	
Hysteresis	Hysteresis mode and window comparator mode selection	
Port size	R1/8 (with M5 female)	
Enclosure	IP40	

Vacuum Regulator

Series IRV

3 sizes

offered in the series

Variations have been expanded to three sizes from only one in the previous series T203.

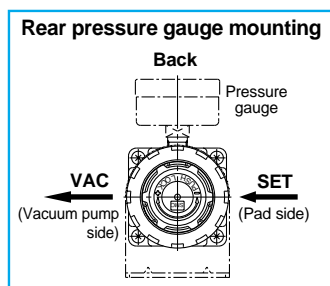
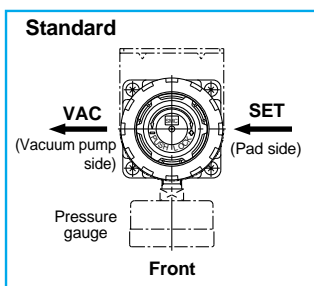
Selection is possible to accommodate the applicable flow rate.

Note) Flow rate corresponds to VAC pressure of -101kPa, SET pressure of -80kPa, and initial flow rate setting of 0/min(ANR).

Compact

Light weight

Pressure gauge can be mounted from the front or rear

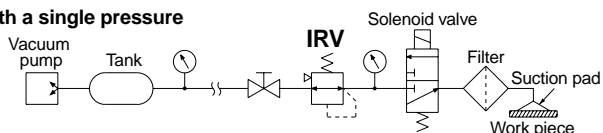


Panel mounting capability is standard

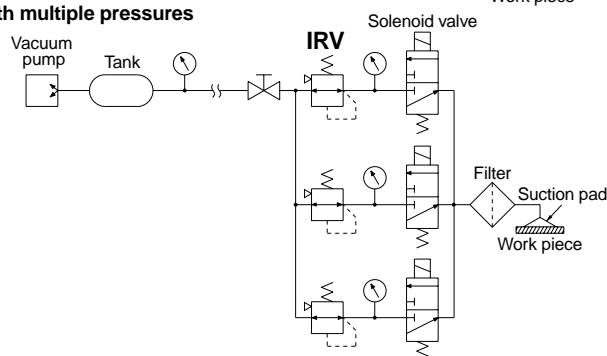
Applications

Lifting of work pieces

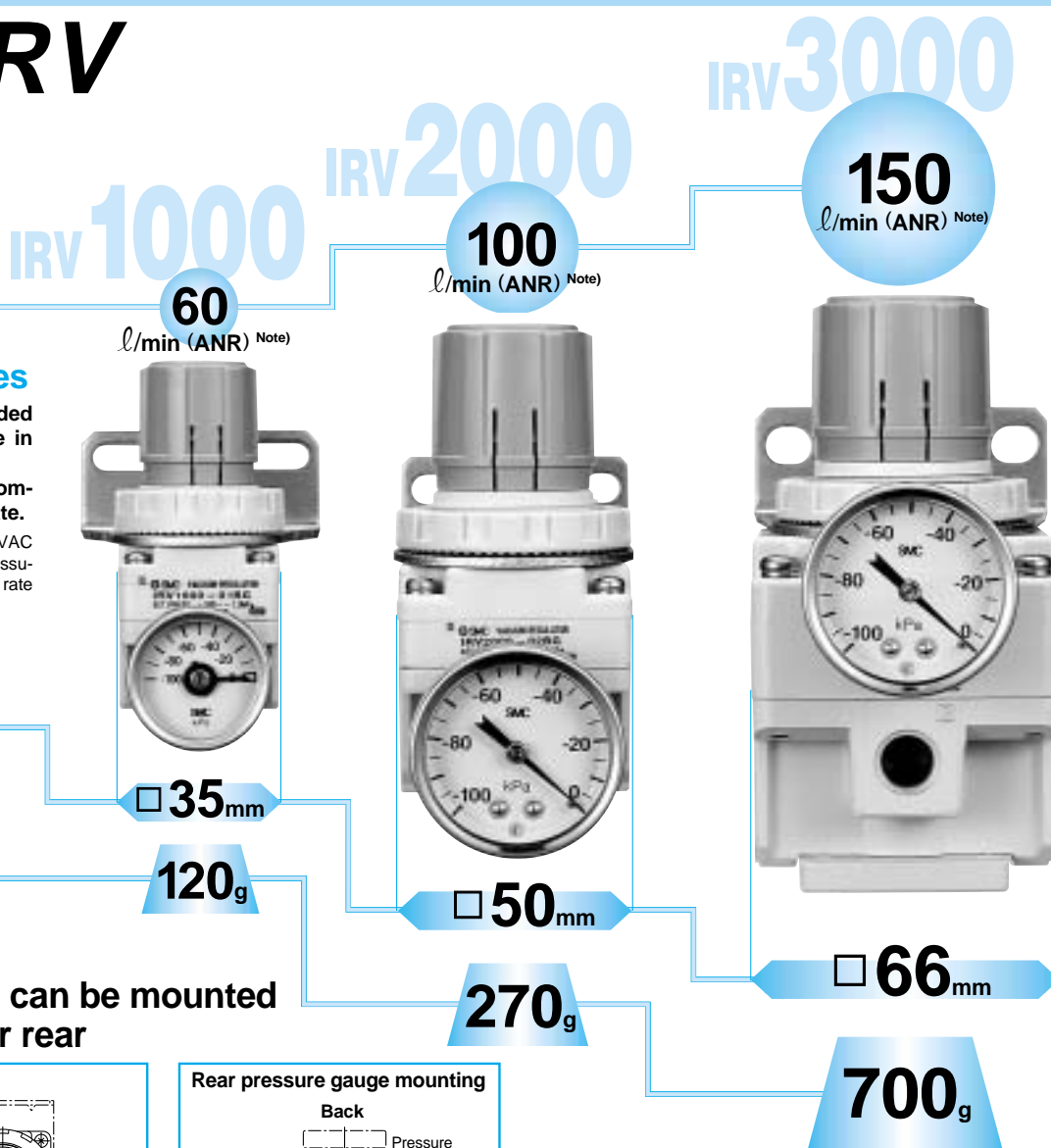
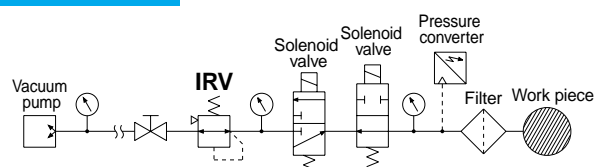
With a single pressure



With multiple pressures



Leak tester



Air Suction Filter

Prevents vacuum equipment trouble due to airborne contaminants.

- Space saving
- Installation and removal are easy with One-touch fittings
- Cartridge type with replaceable element

Model

Model	Port size	Recommended air flow (ℓ/min (ANR))	Weight (kg)
ZFA 100	1/8	50	0.14
ZFA 200	1/4	200	0.19

Series ZFA



Specifications

Fluid	Air/Nitrogen
Operating pressure range	Negative pressure
Proof pressure	0.5MPa
Operating temperature range	5 to 60°C
Filtration	30μm
Element proof pressure differential	0.15MPa

Model

	Model	Port size (Applicable tube O.D.)	Recommended air flow ℓ/min (ANR)	Weight g
		IN side, OUT side		
Metric size	ZFB100-04	ø4	10	22
	ZFB100-06	ø6	20	22
	ZFB200-06	ø6	30	30
	ZFB200-08	ø8	50	30
	ZFB300-08	ø8	75	39
	ZFB300-10	ø10	75	39
Inch size (2)	ZFB101-05	ø3/16"	20	22
	ZFB101-07	ø1/4"	20	22
	ZFB201-07	ø1/4"	30	30
	ZFB301-11	ø3/8"	75	40
	ZFB401-13	ø1/2"	100	62

Series ZFB



Specifications

Fluid	Air/Nitrogen
Operating pressure	Negative pressure
Proof pressure	0.5MPa
Operating and ambient range	0 to 60°C (Non-freezing)
Filtration	30μm
Element proof pressure differential	0.15MPa
Applicable tube material (1)	Nylon/Soft Nylon/Polyurethane

Model/Specifications

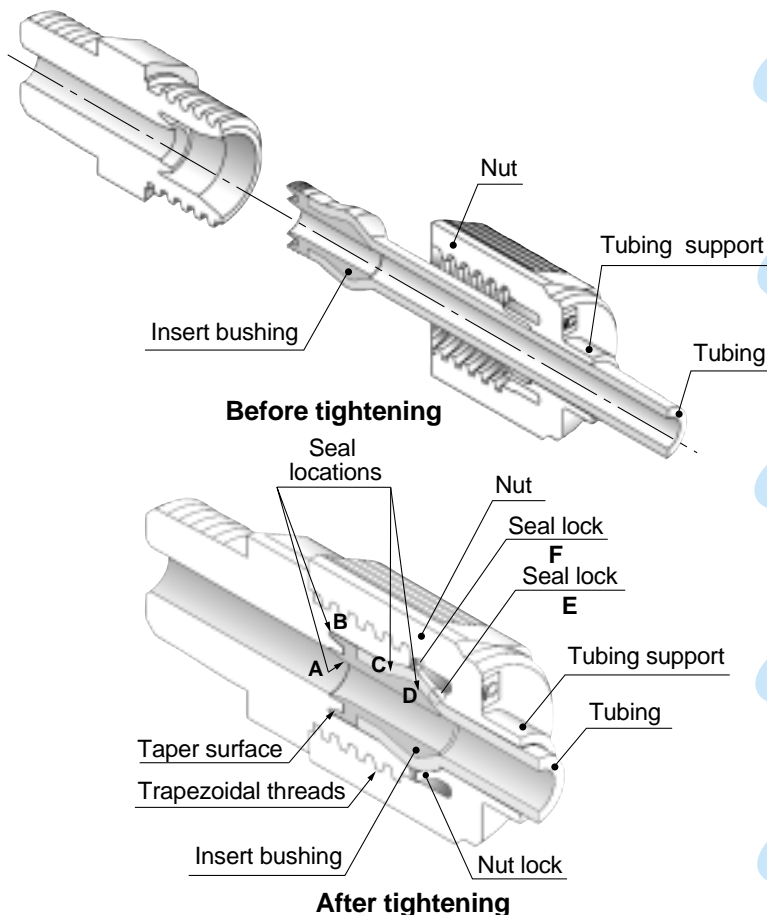
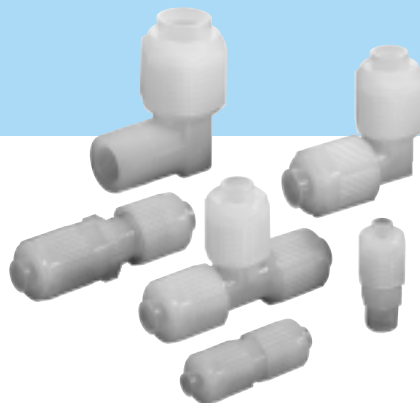
Model	ZFC100		ZFC200	
Applicable tube size mm	ø4	ø6	ø6	ø8
Flow rate N ℓ/min [ANR]	10	20	30	50
Operating pressure range	-100 to 0kPa			
Withstand pressure	0.5MPa			
Filtration degree	10μm			
Element differential pressure resistance	0.15MPa			

Series ZFC



High Purity Fluoropolymer Fittings & Tubing

Fittings **Series LQ**
Tubing **Series TL/TIL**



Quadruple seal construction

Our new high-performance quadruple seal construction (PAT. PEND.), as well as our precision insertion tooling provide maximum leak protection in your process circuitry.

High conductivity and swept flow path

Our quadruple seal construction allows minimal dead space for impurities and contaminants.

Excellent heat resistance

The use of a nut with locking mechanism and trapezoidal screw threads maximizes seal performance even when subjected to heat cycles, maintaining integrity up to 200°C.

Compression nut design resists side loading

Tube support resists crimping and deformation of tubing.

Tube diameters can be changed quickly and easily

If chemistries or flow requirements are changed during process, our face seal design allows for quick change of tubing, and/or tube diameters, using the same fitting body.

Easy tightening of nuts

Tightening to the end surface makes a positioning gauge unnecessary for easy work operations.

Clean specifications

From parts cleaning to assembly and packaging, all processes are controlled for cleanliness, and the use of NEW PFA virtually eliminates particle generation and TOC (total organic carbon) allowing confident use for the most demanding applications.


Outstanding corrosion resistance

Compatible with chemicals such as acids, bases and ultrapure water.

Numerous variations

Compatible with maximum fluid temperatures up to 200°C

New High Purity PFA Fluoropolymer Tubing

Series		Tube O.D.	
TL	<div>Material: High Purity PFA</div> 	Metric size	ø4
			ø6
			ø8
			ø10
			ø12
			ø19
TIL		Inch size	1/8"
			3/16"
			1/4"
			3/8"
			1/2"
			3/4"
			1"

Temperature Control Equipment

Thermo chiller, Thermocon, Chemical thermocon

Temperature control equipment for a wide range of pre-process and post-process uses

Refrigerated type energy saving thermo-chiller

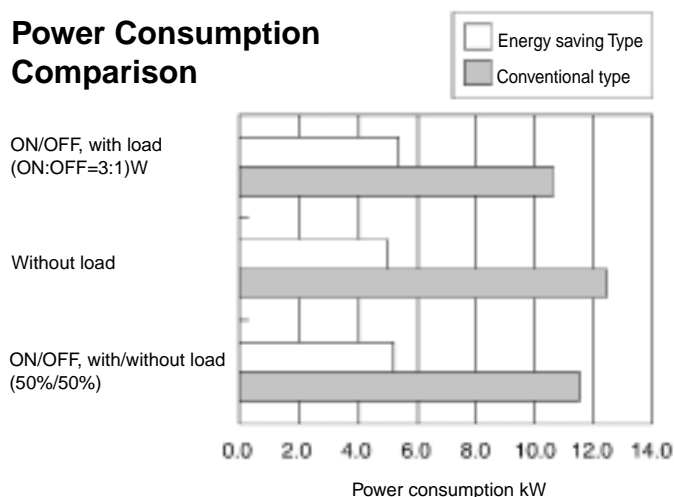
Features

- An energy saving type thermo-chiller is added to the conventional series INR-499.
- A variety of single/double modular configurations is possible.

Specifications

Item	Specifications
Type	Single (1 channel), Dual (2 channel)
Temperature control range	-30 to +90°C
Cooling	1, 2, 3, 4kW
Cooling	Water cooled refrigeration
Recirculating	Completely fluoridated liquid
Pump	35/minhead at 15m
Refrigerant	HFC404A
External communication	Temperature setting, Operation/stop monitor, Temperature monitor, Alarm monitor, Circulating fluid monitor, etc. (RS232C, RS485, DeviceNet)
External signal input/output	Contact for operation, stop, and trouble signals
Protective	Refrigerator overheating, Pump motor overheating, Excess/insufficient circulating fluid, Circulating fluid temperature, etc.
Power supply	Three phase AC200/200-280V±10% (50/60Hz)
Dimensions	700 (450) W x 845D x 1705H (): in case single type
Safety	EMI S2, EU EMC directive conformity
Other	Circulating fluid gauge, Back flow prevention of circulating fluid, etc.

Power Consumption Comparison



Power Consumption Comparison

Conditions	Power consumption kW		Reduction rate
	Conventional type	Energy saving type	
ON/OFF, with load (ON:OFF=3:1)	10.6	5.4	Δ49.1%
Without load	12.4	5.0	Δ9.7%
ON/OFF, with/without load (50%/50%)	11.5	5.2	Δ54.8%

Conventional type: INR-499



Water cooling type thermo chiller

Features

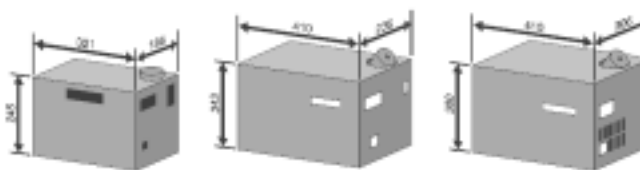
- A water cooling type thermo-chiller that does not require a refrigerator for temperature set range of 30°C or more.
- A large cooling capacity of 100kW.

Standard external communication function
(RS232C, 485, DeviceNet)

Specifications

Item	Specifications
Type	Single (1 channel), Dual (2 channel)
Temperature control range	+30 (Coolant water temperature +10°C) to +80°C
Cooling capacity	to 100kW
Cooling system	Water cooled type
Recirculating fluid	Completely fluoridated liquid. DI water ethyleneglycol
Pump capacity	to 100./minhead at 40m
External communication	Temperature setting, Operation/stop monitor, Temperature monitor, Alarm monitor, Circulating fluid monitor, etc. (RS232C, RS485, DeviceNet)
External signal input/output	Contact for operation, stop, and trouble signals
Protective device	Pump motor overheating, Excess/insufficient circulating fluid, Circulating fluid temperature, etc.
Power supply	Three phase AC200/200-280V±10% (50/60Hz)
Dimensions (mm)	500W x 765D x 1705H
Safety	EMI S2, EU EMC directive conformity
Other	Circulating fluid gauge, Back flow prevention of circulating fluid, etc.

- **Compatible with Fluorinert® and Galden® liquid.**
(HEC405W, 605W)
Available for heat exchange fluids such as Fluorinert® and Galden® liquid.
- **Satisfies CE and SEMI standards.**
International safety standards can also be obtained.



HEC105W•205W

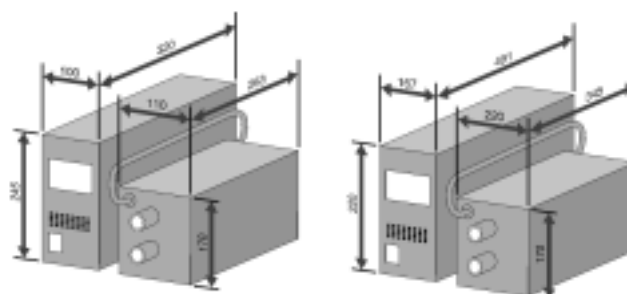
HEC405W

HEC605W

Chemical Thermo-Con

Features

- **Direct temperature control of chemicals for cleaning equipment, etc.**
- **Unique seal construction prevents liquid leakage.**
Employs a unique double seal construction without O-rings allowing use with almost all liquids.
- **Prevents metal contamination.**
Prevents metal contamination by using a plastic heat exchanger containing almost no metals.
- **Deposition of fluororesin film.**
Fluororesin film changed from conventional adhesive application to a unique deposition method, facilitating longer life and high temperature operation.
- **A type with cooling capacity of 450W added.**



240W type

450W type

Thermo-Con Series

Thermo-electric (No-freon) Temperature Controller

Features

- Series expanded from small through medium sizes

Specifications

Model	Cooling capacity*	Temperature setting range	Control accuracy	Power supply
HEC105W	H110W	1060	0.03	AC200V, 3A
HEC205W	230W			AC200V, 5A
HEC405W	350W			AC200V, 4A
HEC605W	600W			AC200V, 5A
HEC1005W Prototype	1005W			AC200V, 10A

- **40% energy savings realized**
Energy savings of 40% compared to previous models has been attained through the development of a new heat exchange system.

**Austria**

SMC Pneumatik GmbH (Austria).
Girakstrasse 8, A-2100 Korneuburg
Phone: 02262-62280, Fax: 02262-62285

**Belgium**

SMC Pneumatics N.V./S.A.
Nijverheidsstraat 20, B-2160 Wommelgem
Phone: 03-355-1464, Fax: 03-355-1466

**Czech**

SMC Czech.s.r.o.
Kodanska 46, CZ-100 10 Prague 10
Phone: 02-67154 790, Fax: 02-67154 793

**Denmark**

SMC Pneumatik
Knudsminde 4B, DK-8300 Odder
Phone: (45)70252900, Fax: (45)70252901

**Estonia**

Teknoma Eesti AS
Mustamäe tee 5, EE-0006 Tallinn, Estonia
Phone: 259530, Fax: 259531

**Finland**

SMC Pneumatikka OY
Veneentekijäntie 7, SF-00210 Helsinki
Phone: 09-681021, Fax: 09-6810233

**France**

SMC Pneumatique, S.A.
1, Boulevard de Strasbourg, Parc Gustave Eiffel
Bussy Saint Georges
F-77607 Marne La Vallée Cedex 3
Phone: 01-6476 1000, Fax: 01-6476 1010

**Germany**

SMC Pneumatik GmbH
Boschring 13-15, D-63329 Egelsbach
Phone: 06103-4020, Fax: 06103-402139

**Greece**

S. Parianopoulos S.A.
9, Konstantinoupolis Street,
GR-11855 Athens
Phone: 01-3426076, Fax: 01-3455578

**Hungary**

SMC Hungary Kft.
Budafoki út 107-113, 1117 Budapest
Phone: 01-204 4366, Fax: 01-204 4371

**Ireland**

SMC Pneumatics (Ireland) Ltd.
2002 Citywest Business Campus,
Naas Road, Saggart, Co. Dublin
Phone: 01-403 9000, Fax: 01-464 0500

**Italy**

SMC Italia S.p.A
Via Garibaldi 62, I-20061 Carugate, (Milano)
Phone: 02-92711, Fax: 02-92150394

**Latvia**

Ottensten Latvia SIA
Ciekurkalna Prima Gara Linija 11,
LV-1026 Riga, Latvia
Phone: 371-23-68625, Fax: 371-75-56748

**Lithuania**

UAB Ottensten Lietuva
Savanoriu pr.180, LT-2600 Vilnius, Lithuania
Phone/Fax: 370-2651602

**Netherlands**

SMC Pneumatics BV
Postbus 308, 1000 AH Amsterdam
Phone: 020-5318888, Fax: 020-5318880

**Norway**

SMC Pneumatics Norway AS
Vollsveien 13 C, Granfoss Næringspark
N-1324 Lysaker
Tel: (47) 67 12 90 20, Fax: (47) 67 12 90 21

**Poland**

Semac Co., Ltd.
PL-05-075 Wesola k/Warszawy, ul.Wspolna 1A
Phone: 022-6131847, Fax: 022-613-3028

**Portugal**

SMC España (Sucursal Portugal), S.A.
Rua de Engº Ferreira Dias 452, 4100 Porto
Phone: 02-610-89-22, Fax: 02-610-89-36

**Romania**

SMC Romania srl
Vasile Stroescu 19, Sector 2, Bucharest
Phone: 01-210-1354, Fax: 01-210-1680

**Russia**

SMC Pneumatik LLC.
36/40 Sredny pr. St. Petersburg 199004
Phone: (812) 118 5445, Fax: (812) 118 5449

**Slovakia**

SMC Slovakia s.r.o.
Pribinova ul. C. 25, 819 02 Bratislava
Phone: 0-563 3548, Fax: 07-563 3551

**Slovenia**

SMC Slovenia d.o.o.
Grajski trg 15, 8360 Zuzembek
Phone: 068-88 044 Fax: 068-88 041

**Spain**

SMC España, S.A.
Zuazobidea 14, Pol. Ind. Jundiz,
E-01015 Vitoria
Phone: 945-184 100, Fax: 945-184 124

**Sweden**

SMC Pneumatics Sweden A.B.
Ekhagsvägen 29-31, S-14105 Huddinge
Phone: 08-603 07 00, Fax: 08-603 07 10

**Switzerland**

SMC Pneumatik AG
Dorfstrasse 7, CH-8484 Weisslingen
Phone: 052-396-3131, Fax: 052-396-3191

**Turkey**

Entek Pnömatik San. ve Tic Ltd. Sti.
Perpa Tic. Merkezi Kat: 11 No: 1625,
TR-80270 Okmeydanı Istanbul
Phone: 0212-221-1512, Fax: 0212-220-2381

**UK**

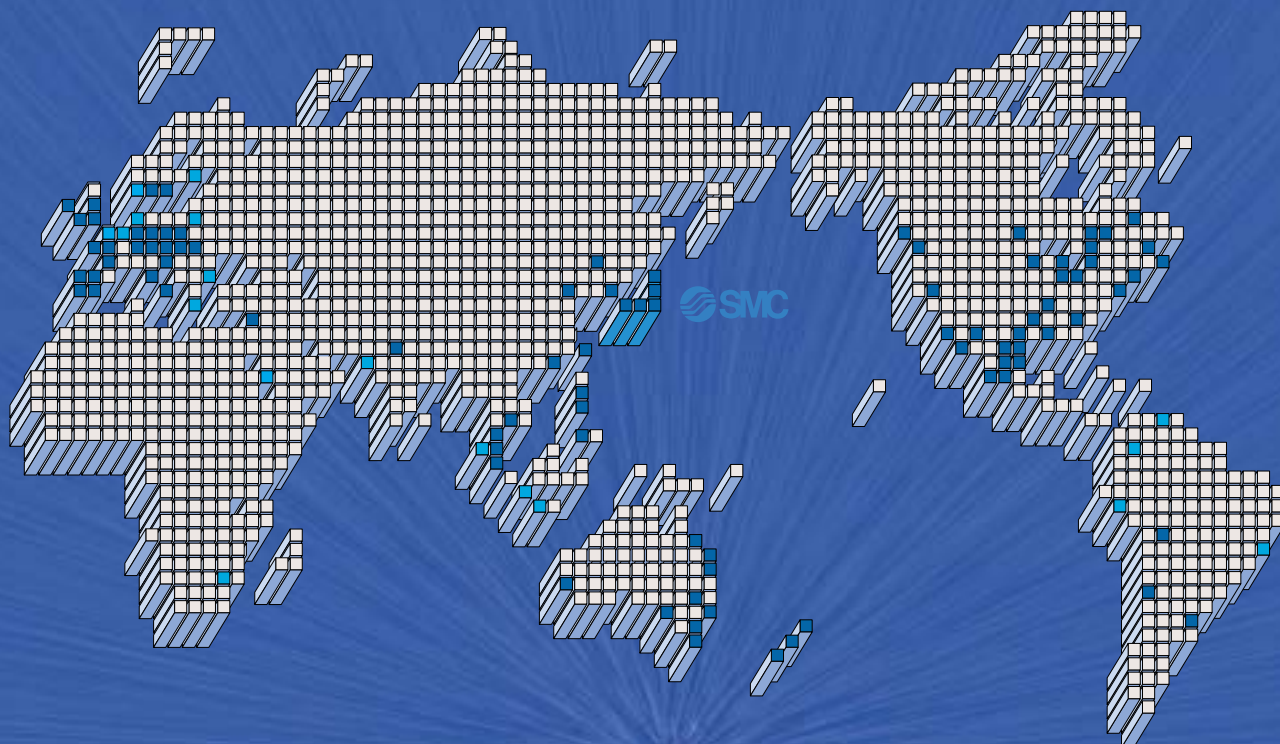
SMC Pneumatics (UK) Ltd
Vincent Avenue, Crownhill,
Milton Keynes, MK8 0AN
Phone: 01908-563888 Fax: 01908-561185

OTHER SUBSIDIARIES WORLDWIDE:

ARGENTINA, AUSTRALIA, BOLIVIA, BRASIL, CANADA, CHILE, CHINA, HONG KONG, INDIA, MALAYSIA, MEXICO, NEW ZEALAND, PHILIPPINES, SINGAPORE, SOUTH KOREA, TAIWAN, THAILAND, USA, VENEZUELA



SMC'S GLOBAL MANUFACTURING, DISTRIBUTION AND SERVICE NETWORK



EUROPE

AUSTRIA

SMC Pneumatik GmbH

CZECH

SMC Czech s.r.o.

DENMARK

SMC Pneumatik A/S

FINLAND

SMC Pneumatiikka OY

FRANCE

SMC Pneumatique SA

GERMANY

SMC Pneumatik GmbH

HUNGARY

SMC Hungary Kft.

IRELAND

SMC Pneumatics (Ireland) Ltd.

ITALY

SMC Italia S.p.A.

NETHERLANDS

SMC Pneumatics BV.

NORWAY

SMC Pneumatics Norway A/S

POLAND

SMC Industrial Automation Polska Sp.z.o.o.

ROMANIA

SMC Romania s.r.l.

RUSSIA

SMC Pneumatik LLC.

SLOVAKIA

SMC Slovakia s.r.o.

EUROPE

SLOVENIA

SMC Slovenia d.o.o.

SPAIN/PORTUGAL

SMC España, S.A.

SWEDEN

SMC Pneumatics Sweden AB

SWITZERLAND

SMC Pneumatik AG.

UK

SMC Pneumatics (U.K.) Ltd.

ASIA

CHINA

SMC (China) Co., Ltd.

HONG KONG

SMC Pneumatics (Hong Kong) Ltd.

INDIA

SMC Pneumatics (India) Pvt. Ltd.

MALAYSIA

SMC Malaysia (S.E.A.) Sdn. Bhd.

PHILIPPINES

SMC Pneumatics (Philippines), Inc.

SINGAPORE

SMC Pneumatics (S.E.A.) Pte. Ltd.

SOUTH KOREA

SMC Pneumatics Korea Co., Ltd.

TAIWAN

SMC Pneumatics (Taiwan) Co., Ltd.

THAILAND

SMC Thailand Ltd.

NORTH AMERICA

CANADA

SMC Pneumatics (Canada) Ltd.

MEXICO

SMC Corporation (Mexico) S.A. de C.V.

USA

SMC Corporation of America

SOUTH AMERICA

ARGENTINA

SMC Argentina S.A.

BOLIVIA

SMC Pneumatics Bolivia S.R.L.

BRAZIL

SMC Pneumaticos Do Brazil Ltda.

CHILE

SMC Pneumatics (Chile) S.A.

VENEZUELA

SMC Neumatica Venezuela S.A.

OCEANIA

AUSTRALIA

SMC Pneumatics (Australia) Pty. Ltd.

NEW ZEALAND

SMC Pneumatics (N.Z.) Ltd.

SMC CORPORATION

1-16-4 Shimbashi, Minato-ku, Tokyo 105-0004, JAPAN

Tel: 03-3502-2740 Fax: 03-3508-2480

URL <http://www.smcworld.com>

© 2001 SMC CORPORATION All Rights Reserved

All specifications in this catalog are subject to change without notice.