

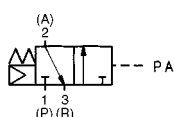
3 Port Air Operated Valve

Series VGA342

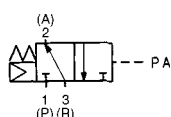


JIS symbol

N.C.



N.O.

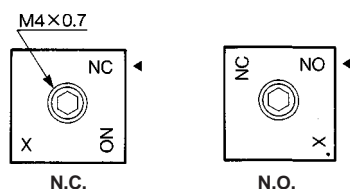


⚠ Precautions

Be sure to read before handling.
Refer to p.0-33 to 0-36 for
Safety Instructions and
common precautions.

⚠ Caution

① Change of fluid passage



Please note that the pressure in the valve should be exhausted when changing the fluid passage.
Loosen the hexagon socket head cap screw M4X0.7. Rotate the NC/NO switching plate and adjust the desired passage NO/NC to ◀ symbol on the adapter plate. However, X symbol at the corner is not applicable. For the piping, follow to the table below.

Piping

Fluid passage	Port	P	A	R
N.C.	Supply side	Secondary side	EXH side (2 port: Plug)	
N.O.	EXH side (2 port: Plug)	Secondary side	Supply side	

② Others

M5 size hole at the left side of the adopter plate is bleed port for spool valve. Do not plug or tighten it.

Specifications

Operating style	Air operated style
Actuation style	NC/NO (Changeable)
Return style	Air+Spring
Fluid	Air
Operating pressure range	0.2 to 0.9MPa
Pilot pressure	Same as operating pressure
Ambient and fluid temperature	Max 50°C
Lubrication	Not required (Use turbin oil class 1 ISOVG32 if lubricating)
Impact/Vibration resistance ⁽¹⁾	150/50 m/s ²



Note 1) Impact resistance: No malfunction occurs on the test using dropping impact tester, to axis and right angle directions of main valve each time when energized and deenergized. (Value in the initial stage.)

Vibration resistance: No malfunction occurs on the test with from 45 to 1000Hz, one sweep, to axis and right angl directions of main valve each time when energized and de-energized. (Value in the initial stage.)

Effective Area

Port size	P→A	Rc(PT) 1/2	Rc(PT) 3/4	Rc(PT)1
Effective area (mm ²)	A→R	140	185	210
	P→A	145	195	235
Cv factor	A→R	7.8	10.3	11.7
	P→A	8.1	10.8	13.1

How to Order

VGA342-04- A

Port size

04 — Rc(PT) 1/2
06 — Rc(PT) 3/4
10 — Rc(PT)1

Port thread
(Standard)
— Rc(PT)
(Option)

F — G(PF)
N — NPT
T — NPTF

Fluid passage

A — Normally closed (N.C.)
B — Normally open (N.O.)

Dimensions

