

1420 BLDC P Series



FEATURES

- > Oil-less
- > Low power consumption
- > Low sound level
- > Low vibration
- > Long lifetime
- > Compact design
- > Lightweight

TYPICAL APPLICATIONS

- > Medical devices
- > Gas monitoring and detection
- > Clinical chemistry analyzers

BASE MODEL

1420 BLDC P



Diaphragm

Diaphragm Pump 1420VP BLDC Performance

FLOW 12/24 VDC	9.2/9.4 l/min
FINAL VACUUM	76%



PNEUMATIC DATA*

Max. flow 12/24VDC	9.2/9.4 l/min
Max. intermittent vacuum	76%
Max. continuous vacuum	76%
Max. restart vacuum	76%

*@ Speed control 5 VDC (Pin3)

OPERATING CONDITIONS*

Media temperature	5 to 40 °C
Ambient temperature	5 to 40 °C
Storage temperature	-30 to 70 °C
Storage humidity	15 to 85% (no condensation)

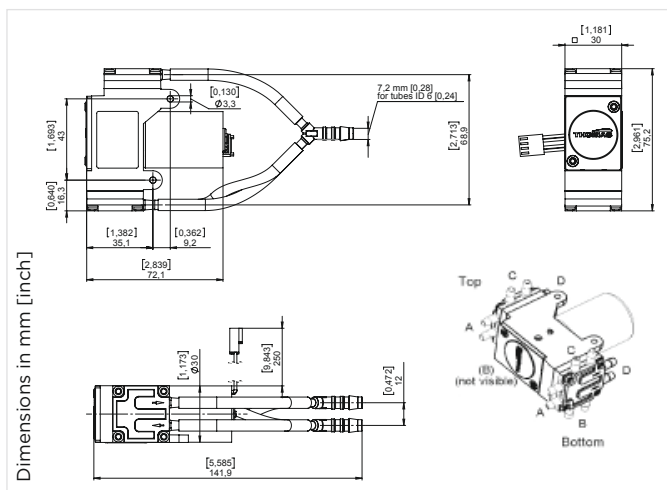
*Standard configuration part number 14200700/14200701

PHYSICAL DATA

Dimensions* l x w x h	72.1 x 30 x 75.2 mm
Weight	205 g
Mounting on side	Through hole Ø 3.3 mm

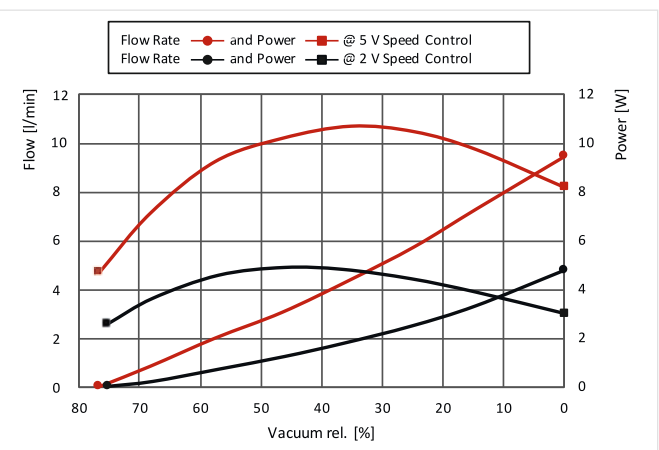
*w/o Tubing

DIMENSIONAL DRAWING



The information presented in this material is based on technical data and test results of nominal units. It is believed to be accurate and reliable and is offered as an aid to help in the selection of Thomas products. It is the responsibility of the user to determine the suitability of the product for the intended use and the user assumes all risk and liability whatsoever in connection therewith. Thomas does not warrant, guarantee or assume any obligation or liability in connection with this information.

PERFORMANCE CURVE



ELECTRICAL DATA

Motor type	Brushless DC (BLDC)
Nominal voltage	12/24 VDC
Max. power consumption	10.1/10.7 W
Insulation class	A
Protection class	IP 20
Drive electronics	Integrated
Connector housing	Molex KK 22-01-3047
Connector terminal	Molex KK 08-50-0031

ELECTRICAL CONNECTION

Pin	Supply	Color	Control
Pin 1	V Supply	Red	12 VDC (max. range 9 - 14 V) 24 VDC (max. range 20 - 26 V)
Pin 2	Ground	Black	Ground for all pins
Pin 3	Speed Control	Blue	Analog 1.0 - 5.0 VDC (5.5V max.) PWM 10 - 30 kHz / 23 - 90% Threshold 1.0 VDC (23% PWM)
Pin 4	Tacho out	Green	3 pulses per revolution - Pulse time 12 V DC 'High'/'Low'-Time 50% speed dep. - Pulse time 24 V DC 'High'/'Low'-Time 50% speed dep. - Output level 'Low'-Range 0 V - 0.5 V - Output level 'High'-Range 4.5 V - 5.5 V

MODEL KEY

1420 - V - P - DD - 12V - BLDC P - 3700 - 22 - EEE - PARA

Pos	Options	Description
1	1420	Product Line
2	V / D / VD	Vacuum / Pressure / Vacuum-Pressure
3	P / R / O	Tubing: Parallel / series / no tubing
4	A / B / C / D	Port position: standard D over motor
5	12V / 24V	Nominal voltage
6	BLDC P	Motor: BLDC Performance
7	3700	Nominal motor speed (motor dependent)
8	12 / 15 / 19 / 22	Eccentric: e.g. 22 → 2.2 mm
9	EEE / FFF	Diaphragm, valve, seal material: EPDM / FKM
10	PARA / PPS	Pump head material: IXEF / Ryton

ORDER INFORMATION

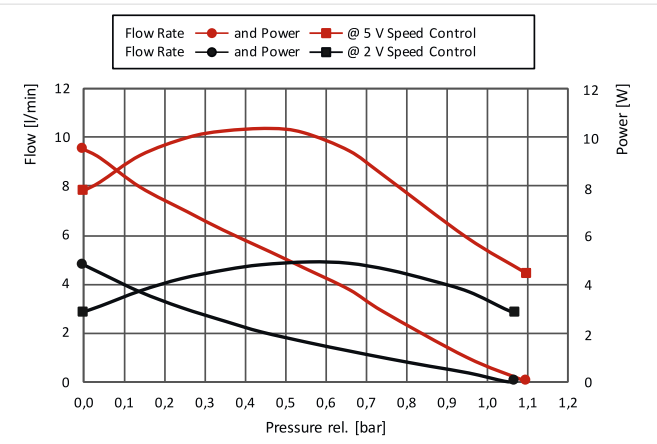
Part Number	Model Key
14200700	1420-V-P-DD-12V-BLDC P-3700-22-EEE-PARA
14200701	1420-V-P-DD-24V-BLDC P-3800-22-EEE-PARA
Other configurations	Upon request

Diaphragm Pump 1420DP BLDC Performance

FLOW 12/24 VDC	9.1/9.5 l/min
FINAL PRESSURE	1.1 bar



PERFORMANCE CURVE



PNEUMATIC DATA*

Max. flow 12/24VDC	9.1/9.5 l/min
Max. intermittent pressure	1.1 bar
Max. continuous pressure	1.1 bar
Max. restart pressure	1.1 bar

*@ Speed control 5 VDC (Pin3)

OPERATING CONDITIONS*

Media temperature	5 to 40 °C
Ambient temperature	5 to 40 °C
Storage temperature	-30 to 70 °C
Storage humidity	15 to 85% (no condensation)

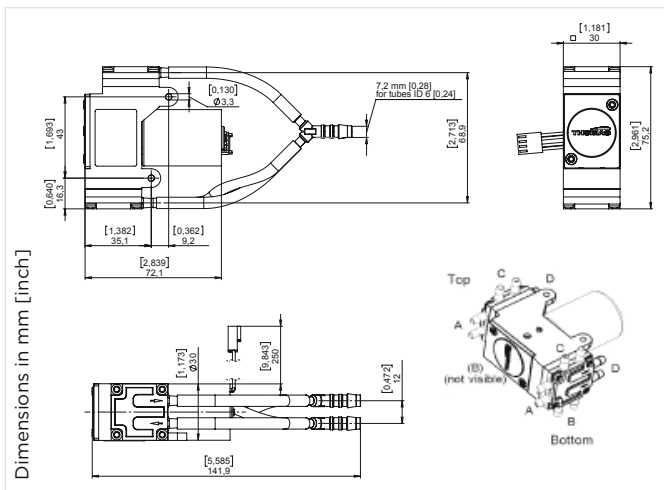
*Standard configuration part number 14200702/14200703

PHYSICAL DATA

Dimensions* l x w x h	72.1 x 30 x 75.2 mm
Weight	205 g
Mounting on side	Through hole Ø 3.3 mm

*w/o Tubing

DIMENSIONAL DRAWING



The information presented in this material is based on technical data and test results of nominal units. It is believed to be accurate and reliable and is offered as an aid to help in the selection of Thomas products. It is the responsibility of the user to determine the suitability of the product for the intended use and the user assumes all risk and liability whatsoever in connection therewith. Thomas does not warrant, guarantee or assume any obligation or liability in connection with this information.

ELECTRICAL DATA

Motor type	Brushless DC (BLDC)
Nominal voltage	12/24 VDC
Max. power consumption	9.7/10.4 W
Insulation class	A
Protection class	IP 20
Drive electronics	Integrated
Connector housing	Molex KK 22-01-3047
Connector terminal	Molex KK 08-50-0031

ELECTRICAL CONNECTION

Pin	Supply	Color	Details
Pin 1	V Supply	Red	12 VDC (max. range 9 - 14 V) 24 VDC (max. range 20 - 26 V)
Pin 2	Ground	Black	Ground for all pins
Pin 3	Speed Control	Blue	Analog 1.0 - 5.0 VDC (5.5V max.) PWM 10 - 30 kHz / 23 - 90% Threshold 1.0 VDC (23% PWM)
Pin 4	Tacho out	Green	3 pulses per revolution
	- Pulse time	12 V DC	'High'/'Low'-Time 50% speed dep.
	- Pulse time	24 V DC	'High'/'Low'-Time 50% speed dep.
	- Output level		'Low'-Range 0 V - 0.5 V
	- Output level		'High'-Range 4.5 V - 5.5 V

MODEL KEY

1420 - D - P - DD - 12V - BLDC P - 3800 - 22 - EEE - PARA

Pos	Options	Description
1	1420	Product Line
2	V / D / VD	Vacuum / Pressure / Vacuum-Pressure
3	P / R / O	Tubing: Parallel / series / no tubing
4	A / B / C / D	Port position: standard D over motor
5	12V / 24V	Nominal voltage
6	BLDC P	Motor: BLDC Performance
7	3800	Nominal motor speed (motor dependent)
8	12 / 15 / 19 / 22	Eccentric: e.g. 22 → 2.2 mm
9	EEE / FFF	Diaphragm, valve, seal material: EPDM / FKM
10	PARA / PPS	Pump head material: IXEF / Ryton

ORDER INFORMATION

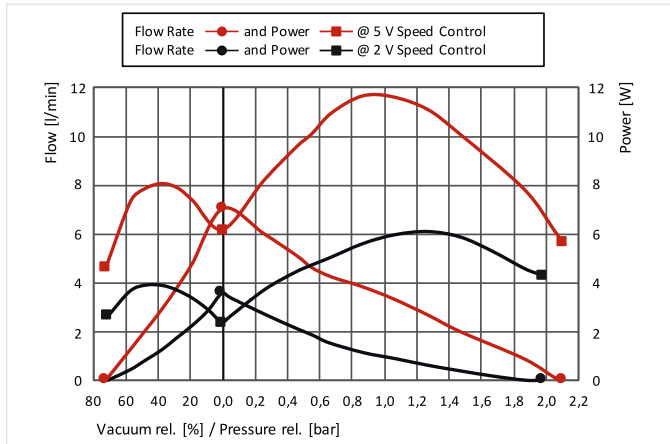
Part Number	Model Key
14200702	1420-D-P-DD-12V-BLDC P-3800-22-EEE-PARA
14200703	1420-D-P-DD-24V-BLDC P-4000-22-EEE-PARA
Other configurations	Upon request

Diaphragm Pump 1420VDP BLDC Performance

FLOW 12/24 VDC	6.8/7.0 l/min
FINAL VACUUM	75%
FINAL PRESSURE	2. bar



PERFORMANCE CURVE



PNEUMATIC DATA*

Max. flow 12/24VDC	6.8/7.0 l/min
Max. intermittent vacuum	75%
Max. continuous vacuum	75%
Max. restart vacuum	75%
Max. intermittent pressure	2.1 bar
Max. continuous pressure	0.7 bar
Max. restart pressure	2.1 bar

*@ Speed control 5 VDC (Pin3)

ELECTRICAL DATA

Motor type	Brushless DC (BLDC)
Nominal voltage	12/24 VDC
Max. power consumption	10.8/11.6 W
Insulation class	A
Protection class	IP 20
Drive electronics	Integrated
Connector housing	Molex KK 22-01-3047
Connector terminal	Molex KK 08-50-0031

OPERATING CONDITIONS*

Media temperature	5 to 40 °C
Ambient temperature	5 to 40 °C
Storage temperature	-30 to 70 °C
Storage humidity	15 to 85% (no condensation)

*Standard configuration part number 14200704/14200705

ELECTRICAL CONNECTION

Pin	Supply	Color	Function
Pin 1	V Supply	Red	12 VDC (max. range 9 - 14 V)
		Black	24 VDC (max. range 20 - 26 V)
Pin 2	Ground	Black	Ground for all pins
Pin 3	Speed Control	Blue	Analog 1.0 - 5.0 VDC (5.5V max.)
			PWM 10 - 30 kHz / 23 - 90%
			Threshold 1.0 VDC (23% PWM)
Pin 4	Tacho out	Green	3 pulses per revolution
			- Pulse time 12 V DC 'High'/'Low'-Time 50% speed dep.
			- Pulse time 24 V DC 'High'/'Low'-Time 50% speed dep.
			- Output level 'Low'-Range 0 V - 0.5 V
			- Output level 'High'-Range 4.5 V - 5.5 V

PHYSICAL DATA

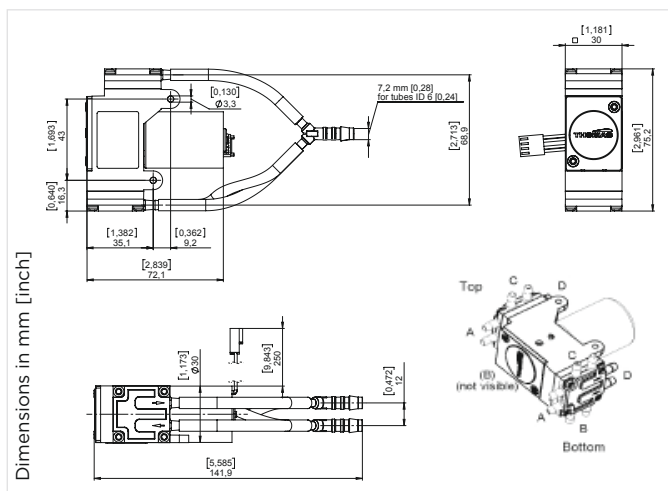
Dimensions* l x w x h	72.1 x 30 x 75.2 mm
Weight	205 g
Mounting on side	Through hole Ø 3.3 mm

*w/o Tubing

MODEL KEY

1420 - VD - P - DD - 12V - BLDC P - 4000 - 15 - EEE - PARA

Pos	Options	Description
1	1420	Product Line
2	V / D / VD	Vacuum / Pressure / Vacuum-Pressure
3	P / R / O	Tubing: Parallel / series / no tubing
4	A / B / C / D	Port position: standard D over motor
5	12V / 24V	Nominal voltage
6	BLDC P	Motor: BLDC Performance
7	4000	Nominal motor speed (motor dependent)
8	12 / 15 / 19 / 22	Eccentric: e.g. 15 → 1.5 mm
9	EEE / FFF	Diaphragm, valve, seal material: EPDM / FKM
10	PARA / PPS	Pump head material: IXEF / Ryton



The information presented in this material is based on technical data and test results of nominal units. It is believed to be accurate and reliable and is offered as an aid to help in the selection of Thomas products. It is the responsibility of the user to determine the suitability of the product for the intended use and the user assumes all risk and liability whatsoever in connection therewith. Thomas does not warrant, guarantee or assume any obligation or liability in connection with this information.

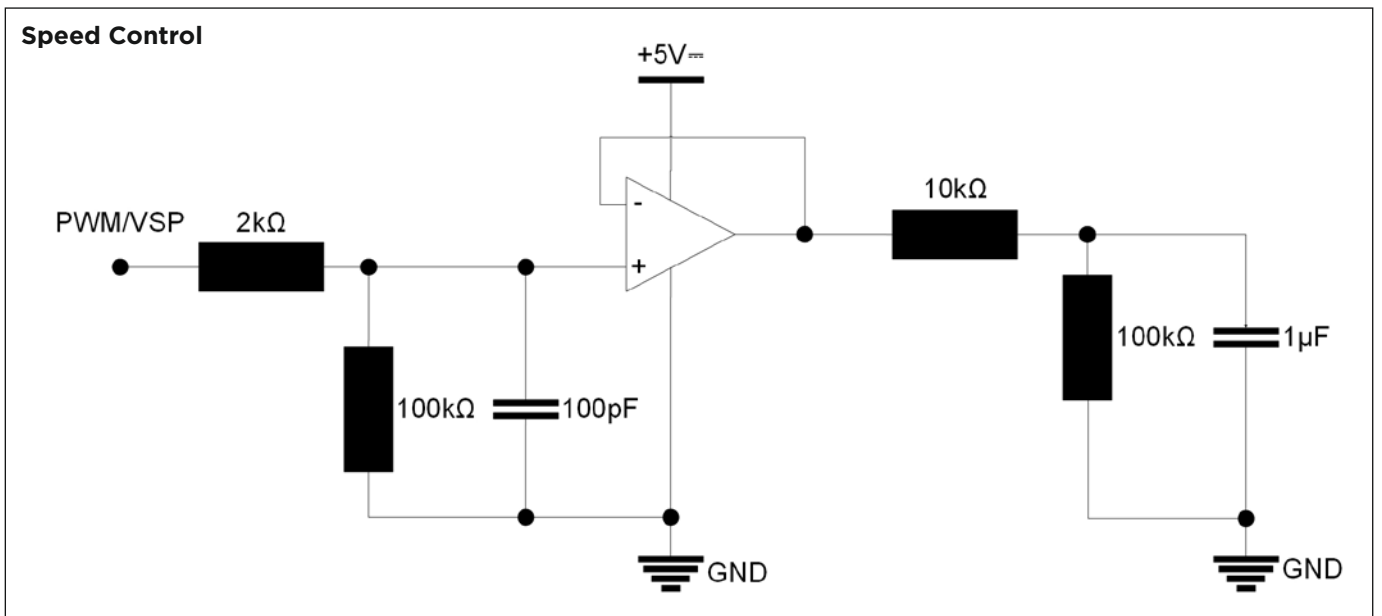
ORDER INFORMATION

Part Number	Model Key
14200704	1420-VD-P-DD-12V-BLDC P-4000-15-EEE-PARA
14200705	1420-VD-P-DD-24V-BLDC P-4100-15-EEE-PARA
Other configurations	Upon request

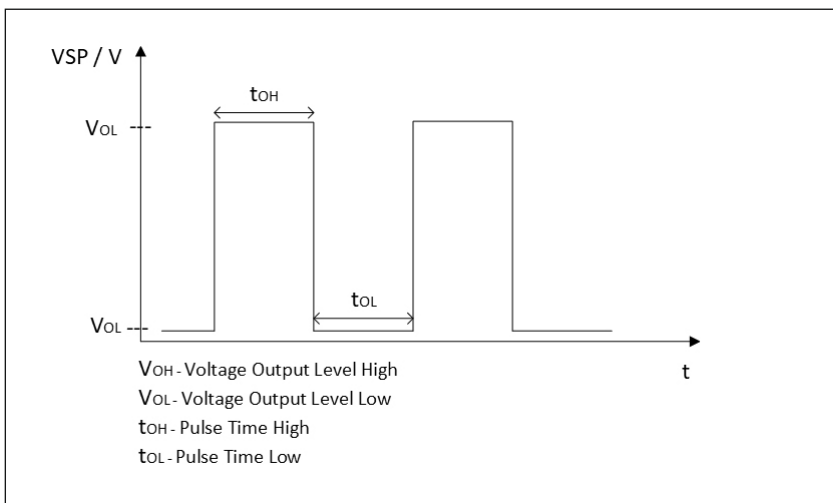
Wiring diagram (BLDC High Performance)

Pin	Function	Colour	Control
Pin 1	V Supply	Red	12 VDC (max. range 9 - 14 VDC) 24 VDC (max. range 20 - 26 VDC)
Pin 2	Ground	Black	Ground for all pins
Pin 3	Speed Control	Blue	Analog 1.0 - 5.0 VDC (5.5 VDC max.) PWM 10 - 30 kHz / 23 - 90 % Threshold 1.0 VDC (23% PWM)
Pin 4	Tacho out - Pulse time - Pulse time - Output level - Output level	Green	3 pulses per revolution 'High'/'Low'-Time 50% speed dependent 'High'/'Low'-Time 50% speed dependent 'Low'-Range 0 VDC - 0.5 VDC 'High'-Range 4.5 VDC - 5.5 VDC

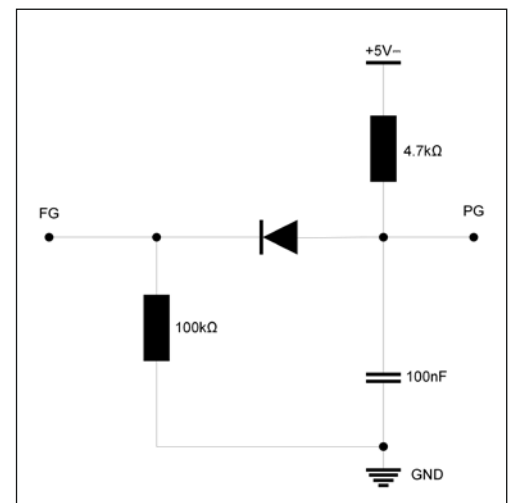
Speed Input



Speed Output Signal



Speed Output (Tacho Out)



PUMP AND COMPRESSOR SOLUTIONS FOR OEMS WORLDWIDE



The information presented in this material is based on technical data and test results of nominal units. It is believed to be accurate and reliable and is offered as an aid to help in the selection of Thomas products. It is the responsibility of the user to determine the suitability of the product for the intended use and the user assumes all risk and liability in connection therewith. Thomas does not warrant, guarantee or assume any obligation or liability in connection with this information.

Models presented in this catalog are representative of the product family. Photos of products pictured in this catalog do not necessarily represent a specific model number. To obtain further information for custom options, contact your local Thomas office.

Printed in Germany Form No. 1420-BLDC-P 12/2025 © Gardner Denver Thomas GmbH. All rights reserved.