

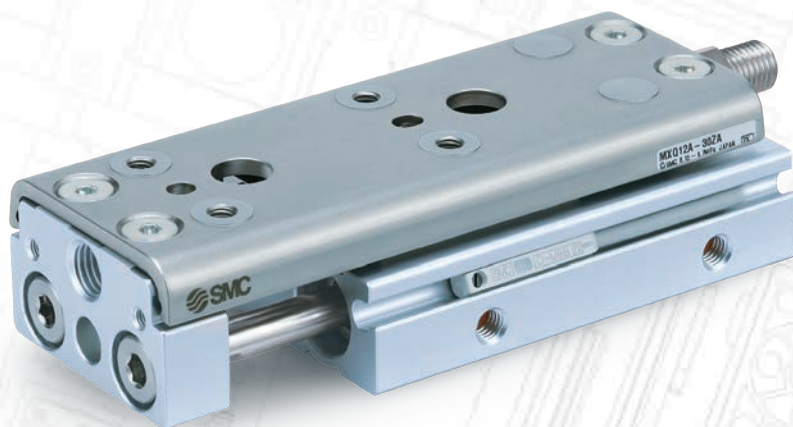
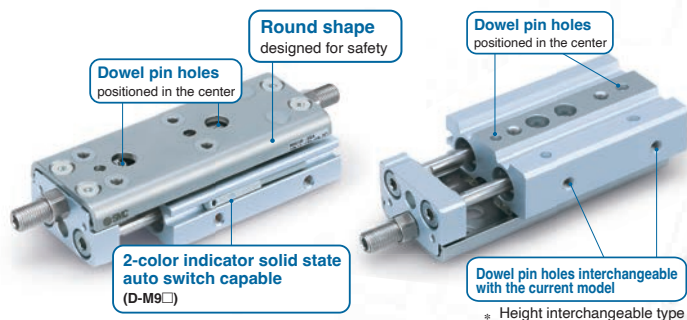
Air Slide Table

ø6, ø8, ø12, ø16, ø20, ø25

RoHS

■ Design optimization with 2 combinations of guide and cylinder bore sizes

■ Table configuration for better function and easier maintenance



■ Variations to meet unique application examples including:

- Horizontal transfer or workpieces, transfer of tools, low thrust clamping
- Transfer of workpieces with increased overhang
- High-accuracy and high-thrust clamping

- The centralized adjuster option is available as standard.
- Made to order options.
 - Dual stroke specification
 - Side adjuster specification
 - Combined use of shock absorber + metal stopper, etc.

MXQ□A Series Double-ported type

Increases flexibility of wiring and piping with piping ports and auto switch mounting grooves on both sides

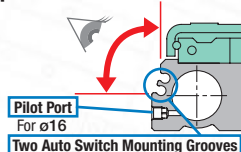
■ Height reduced by **10%** of the previous model

30mm → 27mm

■ Weight reduced by **22%**

380g → 298g

■ A piping port and auto switch mounting groove are provided on both sides.



MXQ□B Series Low thrust with high rigidity type

Combination with a cylinder of one bore size smaller increases rigidity according to thrust. The height can be reduced as well.

Guide rigidity according to thrust improved

■ Guide rigidity improved by **50%**

(For MXQ8B and MXQ8A)

■ Cylinder can be downsized when load is light

- Reduced in height
- Reduced in air consumption
- Lightweight

MXQ□C Series Single side-ported type

Better auto switch visibility. Indicator LED can be checked from one side when used with a short stroke.

■ Compact body with good switch visibility
Applicable to ø8 and ø12 only

■ MCompact design, Two auto switch mounting grooves on one side

MXQ□ Series Height interchangeable type

Height interchangeable with the previous **MXQ** series

- Same height as the current model
- Visibility of auto switches improved
- Interchangeable in mounting with the current model

MXQ Series

Variations

		MXQ□ Height interchangeable type	MXQ□C Single side-ported type	MXQ□C Low thrust with high rigidity type	MXQ□A Double-ported type
		Stroke	Stroke	Stroke	Stroke
Body Option	Standard type	●	●	●	●
	Symmetric type	●	●	●	—
Functional Option	Shorter total length type	●	●	●	●
	Cylinder with stable lubrication function (Lube-retainer)	—	—	—	●
	With buffer	●	●	—	●
	With end lock	●	●	—	●
	Axial piping	●	●	—	●
	With buffer, end lock	●	●	—	●
	With buffer, axial piping	●	●	—	●
	Centralized adjuster	●	●	—	●
	Centralized adjuster (Symmetric type)	●	●	—	●
	Buffer, Centralized adjuster	●	●	—	●
How to Order	Buffer, Centralized adjuster (Symmetric type)	●	●	—	●
	Grease for food processing equipment (-X9)	●	●	●	●
	Long adjustment bolt (10 mm longer adjustment range) (-X11)	●	●	●	●
	Long adjustment bolt (20 mm longer adjustment range) (-X12)	●	●	●	●
	Long adjustment nut and bolt (-X28)	●	●	●	●
	Without built-in auto switch magnet (-X33)	●	●	●	●
	Fluororubber seal (-X39)	●	●	●	●
	Anti-corrosive guide unit (-X42)	●	●	●	●
	EPDM seal (-X45)	●	●	●	●
	Low-speed specification (15 to 50 mm/s) (-X580)	●	●	●	●
	End plate compatible with the current MXQ series (-X2100)	●	—	—	—
	Heat-resistant specification (~10 to 100°C) (-X2128)	●	●	●	●
	Dual stroke specification (-X2192)	—	—	—	●
	Side adjuster specification (-X2200)	●	—	—	—
	Combined use of shock absorber + metal stopper (-X2201)	●	—	—	—
	Extension stroke end adjuster fixed from the axial direction (-X2202)	●	●	●	●

Max. Load Mass

32 mm	0.6 kg
32 mm	1 kg
40 mm	2 kg
50 mm	4 kg
60 mm	6 kg
70 mm	9 kg

Options

Operating Principle/Metal Stopper with Bumper

- The bumper absorbs impact at the initial stage.
- The bumper goes into the adjustment bolt, and the metal stopper performs highly accurate positioning at the end of the adjustment bolt. (Repeated positioning accuracy: ± 0.05 or less)

Metal Stopper with Bumper

High accuracy due to the integrated construction of the bumper and metal stopper: Repeated positioning accuracy of ± 0.05 or less Improved cycle time Operating speed of 300 mm/sec (Current model: 200 mm/sec) (Compared with a stopper of the current MXQ series)

Shock Absorber

Soft type/RJ
Suitable for operations which require gentle stops, such as a lightweight workpiece transfers or low-speed transfers

Rubber Stopper

Impact reduced by 1/2 compared with models without a stroke adjuster

Metal Stopper

Suitable for positioning

With buffer mechanism

- Protects workpieces and tools by eliminating impact at the extension stroke end
- Buffer unit is auto switch capable.

Buffer mechanism operating condition

Normal condition

*By changing the mounting direction of auto switches, the settings of normally ON/OFF can be changed.

With end lock

Locked

- Holds the cylinder's home position to prevent the dropping of a workpiece even if the air supply is cut off

Unlocked

Axial piping

- Centralized piping in the axial direction helps maintain clear space around the body

Centralized adjuster

- The retraction stroke end adjuster is mounted on the extension stroke end adjuster side.



© 2025 SMC Corporation of America, All Rights Reserved.

All reasonable efforts to ensure the accuracy of the information were made at the time of publishing. However, SMC can in no way warrant the information herein contained as specifications are subject to change without notice.