

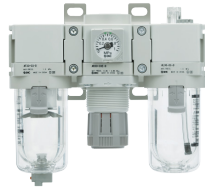


Automation - Controls - Process

Global Leader in Innovation and Manufacturing with over **12,000** basic models and **700,000** variations



Mainline Air Preparation



Modular Air Preparation (FRL)



Fittings & Tubings



Speed Controller



Silencers, Gauges & Blow Guns



Directional Control Valve



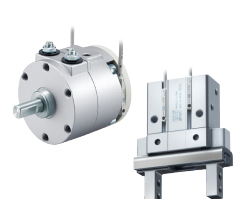
Industrial Communication (Valve I/O)



Sensors, Switches & Instrumentation



Pneumatic Actuators



Rotary Actuators & Grippers



Electric Actuators



Static Neutralization



Vacuum Products



Process Valves



Process Pump



Temperature Control Chillers



Hydraulic Equipment



Chemical Handling



Process Gas



Industrial Filters



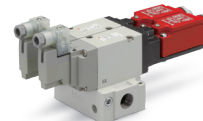
High Vacuum



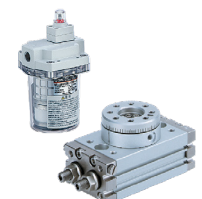
Pneumatic Positioners



Cobots End of Arm Tooling



Safety Related Products



Secondary Battery

SUPPORT



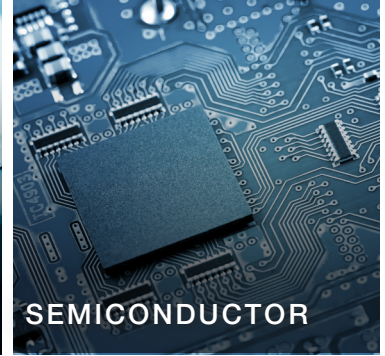
FOOD & BEVERAGE



PACKAGING



LIFE SCIENCE



SEMICONDUCTOR



AUTOMOTIVE



MACHINE TOOL



NATURAL RESOURCE



PROCESS

GLOBAL NETWORK

- Support in over **500** locations across **80** countries and regions worldwide
- Engineering network with **5** global technical centers
- Production facilities in **30** countries and regions
- Global Business Continuity Plan for engineering, production, sales, operations, and IT infrastructure
- Sustainability initiatives in product development, factory production, and operations

NORTH AMERICA

- Support with over **30** sales offices with **nationwide** distribution network
- 2.6M+** sqft North America Headquarters with Support, Engineering, Production, and Central Distribution Center
- Business continuity investments **25,000** sqft ISO 5 Clean room and **28,000** sqft of engineering labs

CANADA	CENTRAL	NORTHEAST
Montreal Toronto	Chicago Cincinnati Cleveland Detroit	Boston New Jersey Rochester
WEST	SOUTHEAST	
Austin Dallas Denver El Paso Los Angeles Phoenix Portland San Jose	Des Moines Grand Rapids Indianapolis Kansas City Milwaukee Minneapolis St. Louis	Atlanta Birmingham Charlotte Knoxville Nashville Tampa

