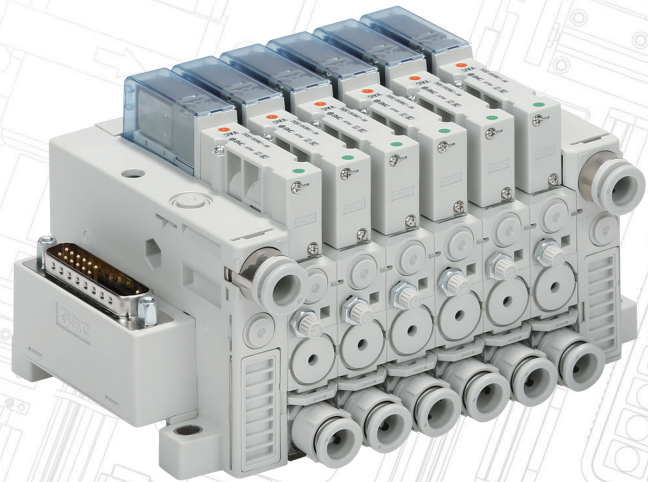


Assembled Vacuum Generator Manifold

Ability to order a fully assembled manifold with up to 10 stations and up to 4 unique station configurations

- Based on the ZK2A Series, the ZKM Series allows the ZKK2 manifold to be assembly with ZK2A units attached
- Reduce air consumption up to **90%** with digital pressure switch with energy saving function
- Short adsorption response time possible with high vacuum flow capability
- Up to **4 unique station configurations** that specify: nozzle size, combination of supply valve and release valve, and vacuum port size



Ejector System

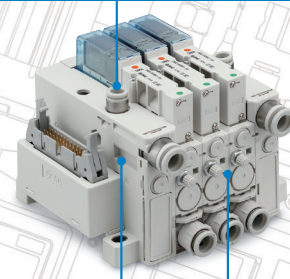
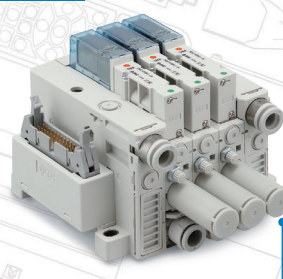
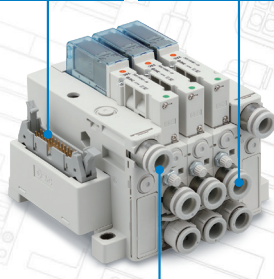
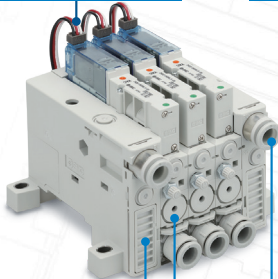
Vacuum Pump System

Individual wiring

D-sub connector

Individual port exhaust

Common pilot pressure supply (PS) port



Complex exhaust*1

Common air pressure supply (PV) port

High-noise reduction silencer exhaust

Flat ribbon cable connector

Common vacuum pressure supply (PV) port

*1 The complex exhaust is a combined exhaust method of the common exhaust from the end plate and the direct exhaust from each station.

Rated Voltage

24 VDC

Manifold stations

1 to 10 stations

Wiring type

- D-sub connector
- Flat ribbon cable connector
- Individual wiring

Exhaust type*3

- Complex exhaust*3
- Port exhaust*3
- High-noise reduction silencer exhaust*3

Nozzle Size

ø 0.7, 1.0, 1.2, 1.5 (mm)

Vacuum Port

ø 6mm, 8mm, 1/4", 5/16"

*3 When the ejector system is selected

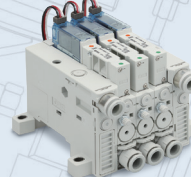
Wiring type



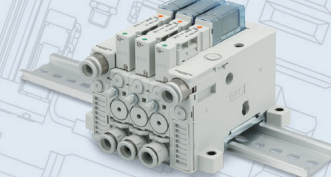
D-sub connector



Flat ribbon cable connector



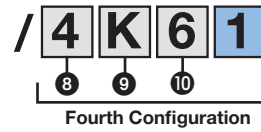
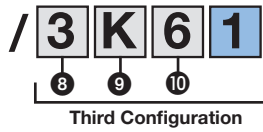
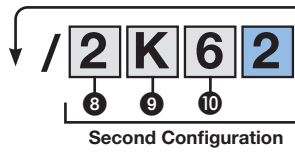
Individual wiring



DIN rail mounting

ZKM Series

How to Order



First...Fourth Configuration quantities must sum to 1 number of stations

Manifold will be assembled left to right (from D-sub side) as in part number

1 Stations

Symbol	Stations
01	1 Station
02	2 Stations
...	...
10	10 Stations

2 Valve wiring

Symbol	Wiring ^{*1}
L	Individual wiring or None
F	D-sub connector
P	Flat ribbon cable connector

*1 F/P wiring cannot be combined with 6 Energy savings switches (K, Q, R, S).
F/P Wiring can only be combined with 9 Nil or Y lead wires.

3 Manifold Options^{*2}

Symbol	Type
Nil	Without option
B	With DIN rail mounting bracket ^{*3}
D	With common release pressure supply (PD) port
L	Manifold individual supply specification

*2 When more than one option is selected, list the symbols in alphabetical order. (Example -BDL)
*3 DIN rail ordered separately.

4 Exhaust^{*4}

Symbol	Exhaust Type
C	Complex exhaust
F	Individual port exhaust
H	High-noise reduction silencer exhaust
Q	Vacuum pump system ^{*5}

*4 Cannot combine different exhaust types.
*5 Q Vacuum pump system cannot be combined with 9 N Valve type

5 Pressure Switch for Vacuum/Pressure Sensor

Symbol	Type	Pressure range [kPa]	Specifications		
			NPN outputs	PNP outputs	With unit selection function
P	Pressure sensor ^{*6}	0 to -101	•	•	•
T		-100 to 100	•	•	•
A	Pressure switch for Vacuum	0 to -101	•	•	•
C			•	•	•
E		-100 to 100	•	•	•
H			•	•	•
K	Pressure Switch for vacuum with energy Saving function ^{*7}	-100 to 100	•	•	•
R			•	•	•
N	Without pressure switch for vacuum/pressure sensor				

*6 For option P & T, the leadwire 6 is included as standard. Select 6 L to receive a valve lead wire, or Y for only pressure sensor lead wire.

*7 Energy savings switches (K, Q, R, S) cannot be combined with 4 Q Vacuum pump system.
Energy savings switches (K, Q, R, S) can only be combined with 9 Nil or W Lead wires.

6 Lead wires

Symbol	Lead wires ^{*8}
Nil	None
L	Standard Lead wires (X2)
V	300 mm Valve only
Y	2 m Switch/Sensor only
W	Energy Saving

*8 L, Y, W lead wires cannot be combined with 9 N Switch.
W lead wire can only be combined with 5 Energy Savings switches (K, Q, R, S).
L, V, W lead wire cannot be combined with 9 N Valve type.

9 Combination of supply valve and release valve

Rated Voltage: 24V

Symbol	Supply Valve		Release Valve
	N.C.	Latching	
K	•	—	•
J	•	—	—
R ^{*13}	—	•	•
N	—	—	—

10 Vacuum (V) Port

Symbol	Vacuum (V) Port
6	Ø6
8	Ø8
7	Ø1/4"
9	Ø5/16"

7 Unit Options^{*12}

Symbol	Type	Function/Application
Nil	Without option	
C	Vacuum pump system PE port female thread specification (M3) ^{*9}	Used for pilot pressure exhaust piping (Standard vacuum pump system is released to the atmosphere.)
E	Vacuum break flow adjusting needle ^{*10}	Screwdriver operation type long lock nut Used when the port position is close to the manifold individual supply and the needle adjustment operation is difficult
J		Round lock nut Thicker than standard hexagon type. More suitable for hand tightening. Round lock nut improves operability when manifold, vacuum pump system, or exhaust port type is used.
K		Screwdriver operation type Slotted type improves fine adjustment, performance when manifold, vacuum pump system, or exhaust port type is used.
W	With exhaust interference prevention valve ^{*11}	When stations are operated individually, exhausted air may flow backward from the V port of generators that are turned off. Exhaust interference prevention valve prevents backflow.

*9 C unit option is only for 4 Q Vacuum pump System

*10 E, J, K unit options can only be combined with 9 K and R Valve types.
E unit option cannot be combined with 7 J or K.

*11 W unit option cannot be combined with 5 Energy saving switches (K, Q, R, S).

*12 When more than one option is selected, list the symbols in alphabetical order. (Example -JKW).

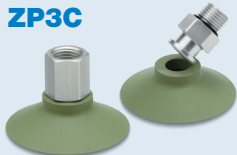
*13 If 9 R Valve Type is selected along with 4 Q Vacuum pump system and 7 C Unit option, 3 D Manifold option must be selected.

8 Nominal Nozzle Size

Symbol	Nominal nozzle size	4 Exhaust Type			
		C	F	H	Q
1	07 (Ø0.7)	•	•	•	—
2	10 (Ø1.0)	•	•	•	—
3	12 (Ø1.2)	•	•	•	—
4	15 (Ø1.5)	•	•	•	—
0	0	—	—	—	•

Related Products

ZP3C



Pad Unit for Corrugated Cardboard

ZP3M



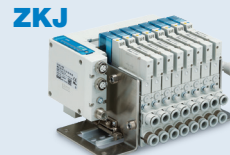
Bowl Shape Vacuum Cup

ZP3P



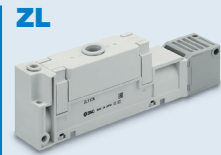
Pad Unit

ZKJ



Vacuum Unit, Manifold Type for Fieldbus System

ZL



Multi-Stage Generator



© 2024 SMC Corporation of America, All Rights Reserved.

All reasonable efforts to ensure the accuracy of the information detailed in this catalog were made at the time of publishing. However, SMC can in no way warrant the information herein contained as specifications are subject to change without notice.