



Automation • Controls • Process



Commercial Cleaning Industries

Suitable for Air, Water, Oil & Chemicals



JSB ANGLE SEAT VALVES



JSX DIRECT OPERATED 2-WAY VALVES



JSXD DIRECT OPERATED 2-WAY VALVES



LFE ELECTROMAGNETIC LIQUID FLOW SWITCH



PA POLUPROPYLENE PROCESS PUMP



JSXD PILOT OPERATED 2-WAY VALVES

LVP Vinyl Chloride 2-way Valves



LVA Fluoropolymer 2-way Valves



LVA Chemical 2-way Valves



Compatible with aggressive chemicals: ammonium hydroxide, hydrochloric acid, hydrogen peroxide, nitric acid, phosphoric acid, sodium hydroxide, sulfuric acid, etc.

Consult SMC for concentration levels

Automation Components for Pressing/Folding/Finishing/Stacking

CQ2
Compact Cylinder
300°F (150°C)



NCM
Round Body Cylinder
300°F (150°C)



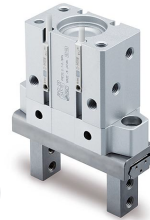
MGP
Guided Cylinder
300°F (150°C)



CY3B
Rodless Cylinder
300°F (150°C)



MHZ
2-Finger Gripper
212°F (100°C)



SY
Directional Control Solenoid Valves



U.S. & Canadian Sales Offices

WEST

Austin
Dallas
Denver
El Paso
Los Angeles
Phoenix
Portland
San Jose

CENTRAL

Chicago
Cincinnati
Cleveland
Detroit
Des Moines
Grand Rapids
Indianapolis
Kansas City
Milwaukee
Minneapolis
St. Louis

EAST

Atlanta
Birmingham
Boston
Charlotte
Knoxville
Nashville
New Jersey
Rochester
Tampa

CANADA

Montreal
Toronto

