



Automation - Controls - Process

ALD Lubricator

Central Control of Multi-point Lubrication



▶ Using a pressure differential to atomize oil into a micro mist, the ALD is capable of lubricating multiple downstream components from one central location while reducing overall oil consumption extending the maintenance cycles between replenishments.

ALD600

- 1" port size
- up to 211 CFM

ALD900

- 2" port size
- up to 530 CFM



▶ Easy oil replenishment by opening, closing the oil filler plug without shutting off the air supply line

Caution: loosen plug with two and a half turns to equalize pressurize to prevent it from flying off

ALD Series

www.smcusa.com

NF547A

How to Order

ALD 9 00 - [] 20 [] - []

Style

ALD	D.P. Lube (Single unit)
-----	-------------------------

Body size (Standard)

6	1B
9	2B

Thread type

Nil	Rc
N	NPT

Port size

06	3/4
10	1
12	1 1/4
14	1 1/2
20	2

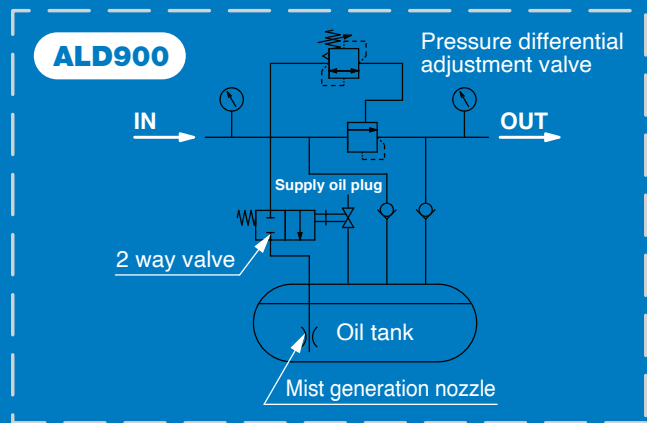
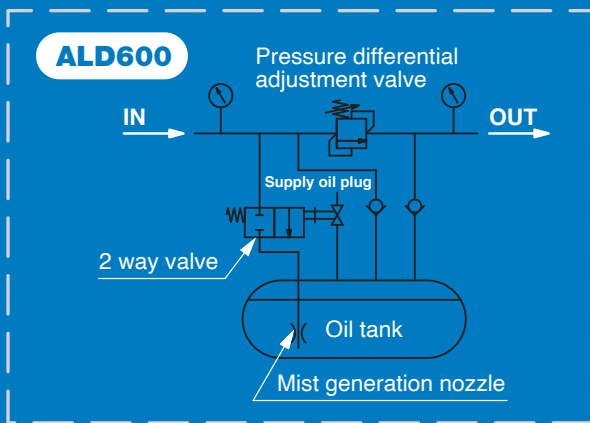
Float switch

Nil	None
S1	1b (without oil ON)
S2	1a (without oil OFF)

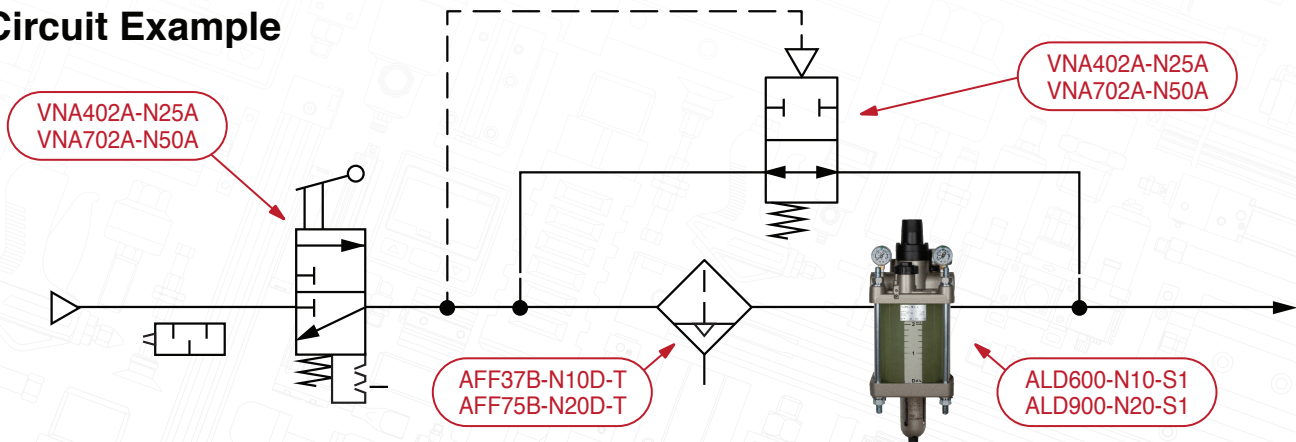
Accessory

Symbol	Description
Nil	—
B	Bracket
P	Panel

Minimum pressure differential is 0.05 MPa (7 psi)



Circuit Example



© 2023 SMC Corporation of America, All Rights Reserved.

All reasonable efforts to ensure the accuracy of the information detailed in this catalog were made at the time of publishing. However, SMC can in no way warrant the information herein contained as specifications are subject to change without notice.

BV RRD 2M