



Automation - Controls - Process

Air Cylinder with Drop Prevention Mechanism

Cylinder with end lock & Cylinder with lock

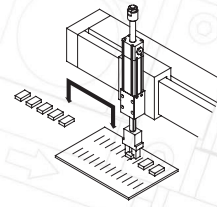
Drop prevention when the pressure of air source is decreased or the residual pressure is released.

Cylinder with End Lock

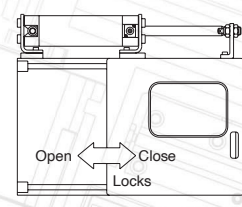
Drop Prevention at Stroke End

- Dual monitored safety shut-off and residual pressure release valve
- Quickly exhaust residual pressure during safety stop condition

Pick and Place



Locking Door



Compact Guide Cylinder

Series *MGP*



Bore Size	Locking Position
Ø20 to Ø100	Both Ends

Air Cylinder

Series *CBJ2*



Bore Size	Locking Position
Ø16	Both Ends

Air Cylinder

Series *CBM2*



Bore Size	Locking Position
Ø20 to Ø40	Both Ends

Air Cylinder

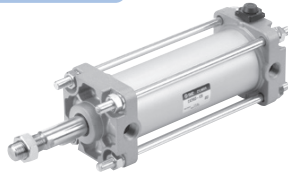
Series *CBG1*



Bore Size	Locking Position
Ø20 to Ø100	Both Ends

Air Cylinder

Series *CBA2*



Bore Size	Locking Position
Ø40 to Ø100	Both Ends

Air Cylinder

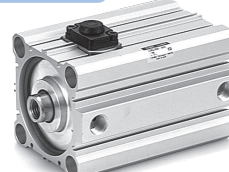
Series *MBB*



Bore Size	Locking Position
Ø32 to Ø100	Both Ends

Compact Cylinder

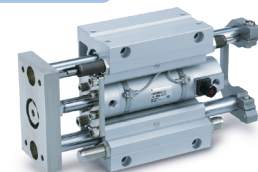
Series *CBQ2*



Bore Size	Locking Position
Ø20 to Ø100	Both Ends

Guide Cylinder

Series *MGG*



Bore Size	Locking Position
Ø20 to Ø100	Both Ends

Dual Rod Cylinder

Series *CXS*



Bore Size	Locking Position
Ø6, Ø10, Ø15, Ø20, to Ø32	Retraction End

Slide Unit

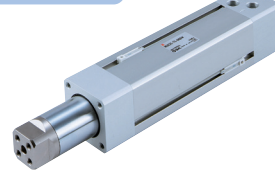
Series *CXW*



Bore Size	Locking Position
Ø10, Ø16, to Ø32	Both Ends

Non-Rotating Rod Double Power Cylinder

Series *MGZ*



Bore Size	Locking Position
Ø40, Ø50, Ø63	Extension End

Precision Cylinder

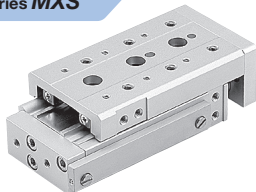
Series *MTS*



Bore Size	Locking Position
Ø12, Ø16, to Ø40	Retraction End

Air Slide Table

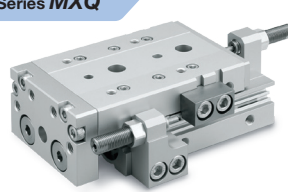
Series *MXS*



Bore Size	Locking Position
Ø8, Ø12, Ø16, to Ø25	Retraction End

Air Slide Table

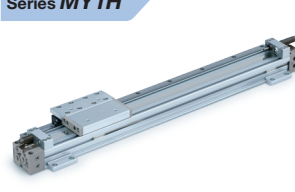
Series *MXQ*



Bore Size	Locking Position
Ø8, Ø12, Ø16, to Ø25	Retraction End

Mechanically Jointed Rodless Cylinder

Series *MY1H*

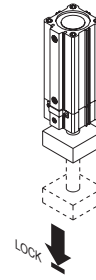


Bore Size	Locking Position
Ø16 to Ø40	Both Ends

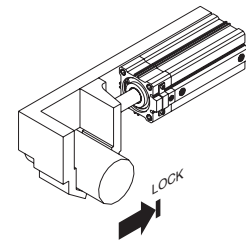
Cylinder with Lock


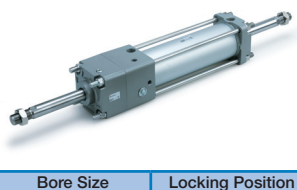

Can Be Locked at Any Desired Position

- Suitable for intermediate stops and emergency stops.
 - Intermediate stop with following series is not possible...
CLQ, RLQ, MLU, MLGP, and CLK2
- Locking position can be changed in accordance with the external stopper position and thickness of clamped workpieces.



Retraction Locking



<p>Cylinder with Lock</p> <p>Series <i>MWB</i></p>  <table border="1"> <tr> <th>Bore Size</th> <th>Locking Position</th> </tr> <tr> <td>Ø32 to Ø100</td> <td>Both Directions</td> </tr> </table>	Bore Size	Locking Position	Ø32 to Ø100	Both Directions	<p>Cylinder with Lock</p> <p>Series <i>C96N</i></p>  <table border="1"> <tr> <th>Bore Size</th> <th>Locking Position</th> </tr> <tr> <td>Ø32 to Ø100</td> <td>Both Directions</td> </tr> </table>	Bore Size	Locking Position	Ø32 to Ø100	Both Directions	<p>Cylinder with Lock</p> <p>Series <i>CLS</i></p>  <table border="1"> <tr> <th>Bore Size</th> <th>Locking Position</th> </tr> <tr> <td>Ø125 to Ø250</td> <td>Both Directions</td> </tr> </table>	Bore Size	Locking Position	Ø125 to Ø250	Both Directions	<p>Fine Lock Cylinder</p> <p>Series <i>CLJ2</i></p>  <table border="1"> <tr> <th>Bore Size</th> <th>Locking Position</th> </tr> <tr> <td>Ø16</td> <td>Both Directions</td> </tr> </table>	Bore Size	Locking Position	Ø16	Both Directions
Bore Size	Locking Position																		
Ø32 to Ø100	Both Directions																		
Bore Size	Locking Position																		
Ø32 to Ø100	Both Directions																		
Bore Size	Locking Position																		
Ø125 to Ø250	Both Directions																		
Bore Size	Locking Position																		
Ø16	Both Directions																		
<p>Fine Lock Cylinder</p> <p>Series <i>CLM2</i></p>  <table border="1"> <tr> <th>Bore Size</th> <th>Locking Position</th> </tr> <tr> <td>Ø20 to Ø40</td> <td>Both Directions</td> </tr> </table>	Bore Size	Locking Position	Ø20 to Ø40	Both Directions	<p>Cylinder with Lock</p> <p>Series <i>CNG</i></p>  <table border="1"> <tr> <th>Bore Size</th> <th>Locking Position</th> </tr> <tr> <td>Ø20 to Ø100</td> <td>Both Directions</td> </tr> </table>	Bore Size	Locking Position	Ø20 to Ø100	Both Directions	<p>Cylinder with Lock</p> <p>Series <i>CNA2</i></p>  <table border="1"> <tr> <th>Bore Size</th> <th>Locking Position</th> </tr> <tr> <td>Ø40 to Ø100</td> <td>Both Directions</td> </tr> </table>	Bore Size	Locking Position	Ø40 to Ø100	Both Directions	<p>Cylinder with Lock</p> <p>Series <i>CNS</i></p>  <table border="1"> <tr> <th>Bore Size</th> <th>Locking Position</th> </tr> <tr> <td>Ø125 to Ø160</td> <td>Both Directions</td> </tr> </table>	Bore Size	Locking Position	Ø125 to Ø160	Both Directions
Bore Size	Locking Position																		
Ø20 to Ø40	Both Directions																		
Bore Size	Locking Position																		
Ø20 to Ø100	Both Directions																		
Bore Size	Locking Position																		
Ø40 to Ø100	Both Directions																		
Bore Size	Locking Position																		
Ø125 to Ø160	Both Directions																		
<p>Lock-Up Cylinder</p> <p>Series <i>CL1</i></p>  <table border="1"> <tr> <th>Bore Size</th> <th>Locking Position</th> </tr> <tr> <td>Ø40 to Ø160</td> <td>One Direction</td> </tr> </table>	Bore Size	Locking Position	Ø40 to Ø160	One Direction	<p>Compact Cylinder with Lock</p> <p>Series <i>CLQ</i></p>  <table border="1"> <tr> <th>Bore Size</th> <th>Locking Position</th> </tr> <tr> <td>Ø20 to Ø100</td> <td>One Direction</td> </tr> </table>	Bore Size	Locking Position	Ø20 to Ø100	One Direction	<p>Compact Cylinder with Air Cushion and Lock</p> <p>Series <i>RLQ</i></p>  <table border="1"> <tr> <th>Bore Size</th> <th>Locking Position</th> </tr> <tr> <td>Ø32 to Ø63</td> <td>One Direction</td> </tr> </table>	Bore Size	Locking Position	Ø32 to Ø63	One Direction	<p>Plate Cylinder with Lock</p> <p>Series <i>MLU</i></p>  <table border="1"> <tr> <th>Bore Size</th> <th>Locking Position</th> </tr> <tr> <td>Ø25 to Ø50</td> <td>One Direction</td> </tr> </table>	Bore Size	Locking Position	Ø25 to Ø50	One Direction
Bore Size	Locking Position																		
Ø40 to Ø160	One Direction																		
Bore Size	Locking Position																		
Ø20 to Ø100	One Direction																		
Bore Size	Locking Position																		
Ø32 to Ø63	One Direction																		
Bore Size	Locking Position																		
Ø25 to Ø50	One Direction																		
<p>Compact Guide Cylinder with Lock</p> <p>Series <i>MLGP</i></p>  <table border="1"> <tr> <th>Bore Size</th> <th>Locking Position</th> </tr> <tr> <td>Ø20 to Ø63</td> <td>One Direction</td> </tr> </table>	Bore Size	Locking Position	Ø20 to Ø63	One Direction	<p>Fine Lock Cylinder with Guide</p> <p>Series <i>MLGC</i></p>  <table border="1"> <tr> <th>Bore Size</th> <th>Locking Position</th> </tr> <tr> <td>Ø20 to Ø40</td> <td>Both Directions</td> </tr> </table>	Bore Size	Locking Position	Ø20 to Ø40	Both Directions	<p>Clamp Cylinder with Lock</p> <p>Series <i>CLK2</i></p>  <table border="1"> <tr> <th>Bore Size</th> <th>Locking Position</th> </tr> <tr> <td>Ø32 to Ø63</td> <td>One Direction</td> </tr> </table>	Bore Size	Locking Position	Ø32 to Ø63	One Direction	<p>Rodless Cylinder with Lock</p> <p>Series <i>ML1C</i></p>  <table border="1"> <tr> <th>Bore Size</th> <th>Locking Position</th> </tr> <tr> <td>Ø25 to Ø40</td> <td>Both Directions</td> </tr> </table>	Bore Size	Locking Position	Ø25 to Ø40	Both Directions
Bore Size	Locking Position																		
Ø20 to Ø63	One Direction																		
Bore Size	Locking Position																		
Ø20 to Ø40	Both Directions																		
Bore Size	Locking Position																		
Ø32 to Ø63	One Direction																		
Bore Size	Locking Position																		
Ø25 to Ø40	Both Directions																		



© 2024 SMC Corporation of America, All Rights Reserved.

All reasonable efforts to ensure the accuracy of the information detailed in this catalog were made at the time of publishing. However, SMC can in no way warrant the information herein contained as specifications are subject to change without notice.