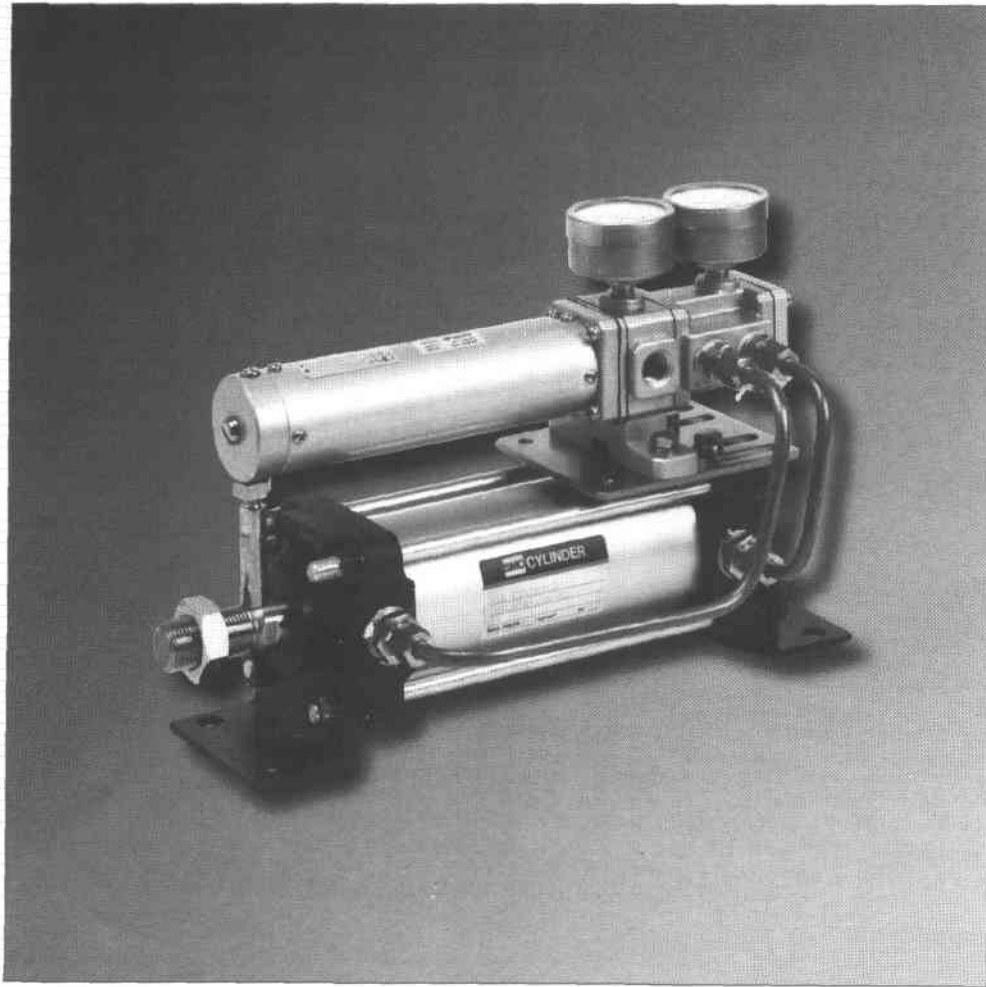




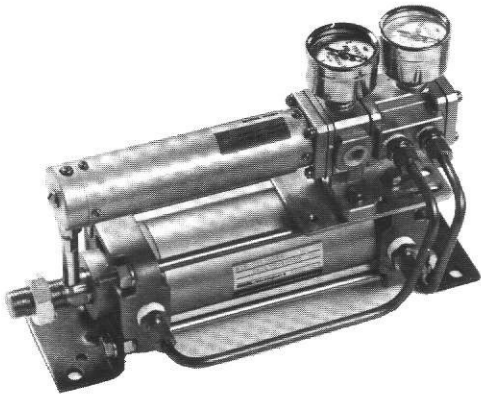
Air Cylinder

CP Series

Cylinder Positioner Assembly



Bore Sizes: \varnothing 50mm, \varnothing 63mm, \varnothing 80mm, \varnothing 100mm
Infinite Control from Zero to Full Stroke
3~15 psig Signal Pressure
Built-in Feed Back
Non-lubed Operation is Standard

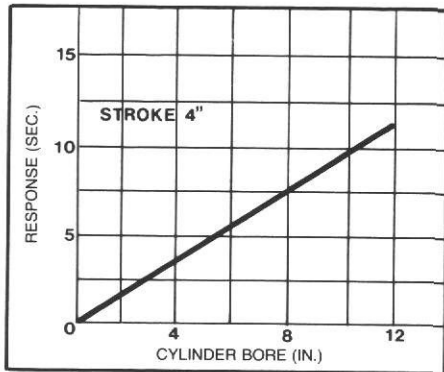


SPECIFICATIONS

CHARACTERISTICS	
Supply Pressure	40-100 PSIG (3.0-7.0 Kg/cm ²)
Signal Pressure	3-15 PSIG (0.2-1 Kg/cm ²)
Linearity	Less than ± 2%
Hysteresis	Less than 1%
Repeatability	Less than 1%
Sensitivity	Less than 0.5% of full span
Air Consumption (Min.)	0.64 Scfm (18 NL/min) @ 70 PSIG (5.0 Kg/cm ²)
Supply Pressure Effect	0.5% per 7 PSIG (0.5 Kg/cm ²) Change
Available Cylinder Sizes	Bore: 2" to 4" (50-100mm)
	Stroke: 1" (25 mm) min. to 12" (300 mm) max.
Operating Temperature	40-140°F (5-60°C)
Response Time	Refer to Chart

The SMC Series "CP" Cylinder Positioner provides accurate and stable positioning for use in process control, servo control and other general industries. It is compactly designed for easy installation and maintenance.

RESPONSE TIME *



*Supply Pressure 75 PSI
Signal Pressure 15 PSI

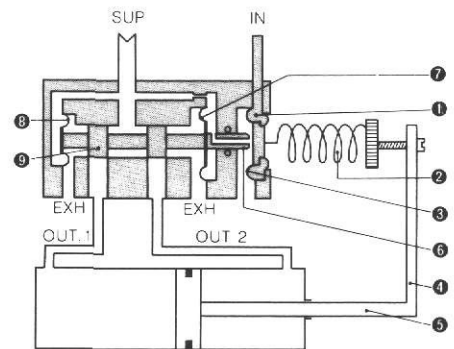
OPERATION (Refer to Diagram below)

Under "Zero Signal Pressure" conditions, air entering the Supply Port pressurizes both Spool End Diaphragms (7) & (8) of Valve Spool (9). Due to pressure loss thru restriction orifice and Nozzle (6), the Spool is unbalanced and moves toward orifice end. This causes Supply Pressure to pressurize Rod End of cylinder (Out 2) and exhaust through (Out 1), causing cylinder to retract. At this point, the Valve Spool is held in a neutral position by the pressure of End Diaphragm (8), balancing the pressure on Diaphragm (7) generated by the proximity of Nozzle (6) with Signal Diaphragm (3).

When "Signal Air Pressure" is introduced, movement in Signal Diaphragm (3) restricts the air escaping from Nozzle (6) and increases effective air pressure to Valve Spool Diaphragm (7). This causes Valve Spool (9) to move and allows supply air to extend the cylinder.

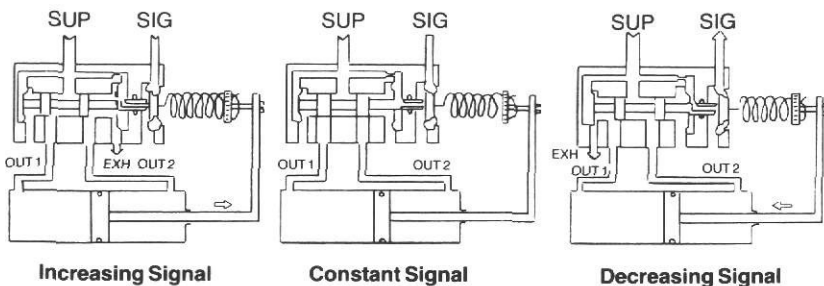
When effective force on Feed Back Spring (2) neutralizes Signal Diaphragm (3), Valve Spool (9) will return to neutral position; and the cylinder will remain in position relative to signal pressure.

A Span Adjuster and Zero Adjuster are provided for fine adjustment of the Feed Back Spring (2).



Installation Requirements:

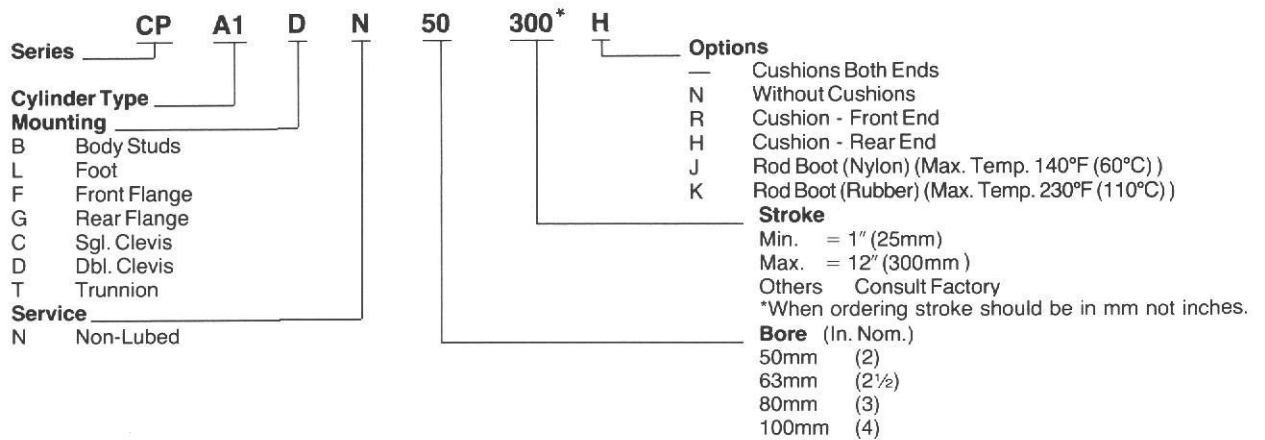
1. Supply and Signal air must be dry and dust free. Recommend use of SMC Series AM Mist Separator.
2. It is recommended that a SMC Series IR Instrument Regulator or Series IT Transducer be used with Signal Air Supply.
3. Check for contaminants and clean out air lines before connecting to unit.



HOW TO ORDER

The part number key below will assist in ordering.

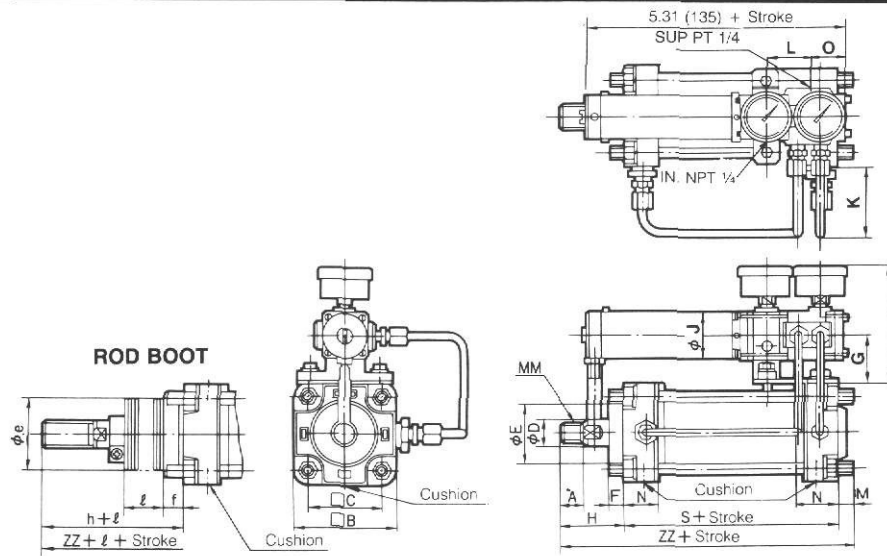
Substitute the required bore, stroke, etc., in the key example to construct the number of the required actuator.



Accessories

Description	Bore			
	50 mm	63 mm	80 mm	100 mm
Rod Sgl. Clevis	I-05	I-05	I-08	I-10
Rod Dbl. Clevis	Y-05A	Y-05A	Y-08A	Y-10A
Rod Clevis Pin	CDP-3	CDP-3	CDP-5	CDP-6
Rod Nut	NT-05	NT-05	NT-08	NT-10
Mounting Bracket Clevis Pin	CDP-3	CDP-4	CDP-6	CDP-7

CPA1BN

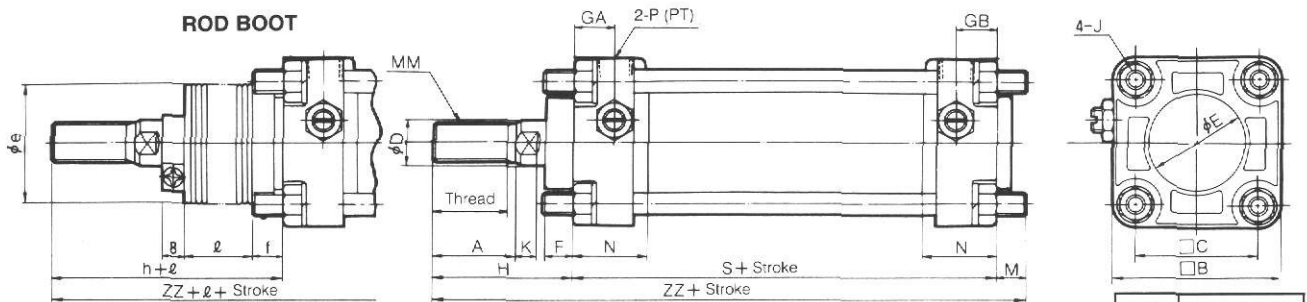


BORE	A	B	C	D	E	F	G	J	K	L	M	MM	N	O	S	w/o Boot		with Boot*				
																H	ZZ	øe	f	h	ℓ	zz
50mm	1.38 (35)	2.76 (70)	2.05 (52)	0.79 (20)	1.57 (40)	0.39 (10)	3.94 (100)	1.50 (38)	2.44 (62)	1.38 (35)	0.43 (11)	M18x1.5	1.18 (30)	1.22 (31)	3.54 (90)	2.28 (58)	6.26 (159)	2.05 (52)	0.44 (11.2)	2.60 (66)	STROKE 1/4	6.57 (167)
63mm	1.38 (35)	3.35 (85)	2.52 (64)	0.79 (20)	1.57 (40)	0.39 (10)	3.94 (100)	1.50 (38)	2.44 (62)	1.38 (35)	0.55 (14)	M18x1.5	1.22 (31)	1.22 (31)	3.86 (98)	2.28 (58)	6.69 (170)	2.05 (52)	0.44 (11.2)	2.60 (66)		7.01 (178)
80mm	1.57 (40)	4.02 (102)	3.07 (78)	0.98 (25)	2.05 (52)	0.55 (14)	3.94 (100)	1.50 (38)	2.44 (62)	1.38 (35)	0.67 (17)	M22x1.5	1.47 (37)	1.22 (31)	4.57 (116)	2.79 (71)	8.03 (204)	2.56 (65)	0.49 (12.5)	3.15 (80)		8.39 (213)
100mm	1.57 (40)	4.57 (116)	3.62 (92)	1.18 (30)	2.05 (52)	0.55 (14)	3.94 (100)	1.50 (38)	2.44 (62)	1.38 (35)	0.67 (17)	M22x1.5	1.57 (40)	1.22 (31)	4.96 (126)	2.83 (72)	8.46 (215)	2.56 (65)	0.55 (14.0)	3.19 (81)		8.82 (224)

*Min. Stroke = 0.79" (20mm) with Boot

Millimeters in Parentheses

CPA1BN



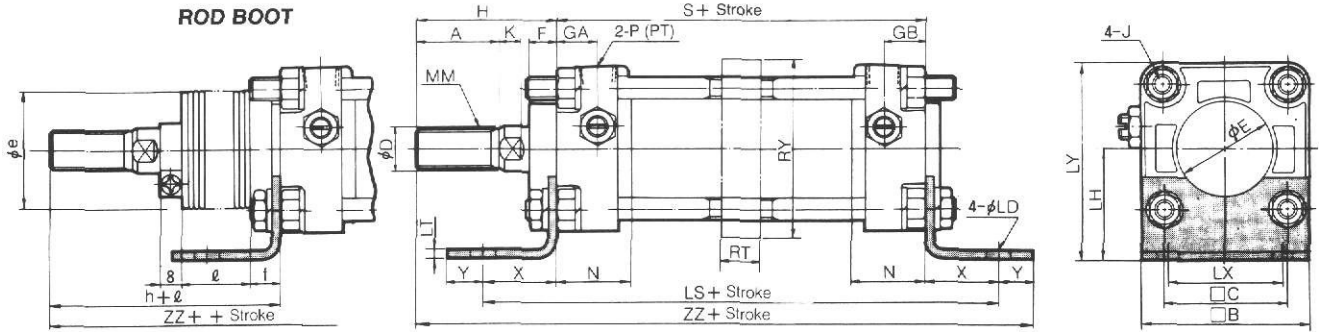
Bores (mm)	Thread Length In. (mm)
50/63	1.26 (32)
80/100	1.46 (37)

BORE	A	B	C	D	E	F	GA/GB	J	K	M	MM	N	P	S	w/o Boot		with Boot*				
															H	ZZ	øe	f	h	ℓ	zz
50mm	1.38 (35)	2.76 (70)	2.05 (52)	0.79 (20)	1.57 (40)	0.39 (10)	0.67 (17)	M8x1.25	0.28 (7)	0.43 (11)	M18x1.5	1.18 (30)	3/8	3.54 (90)	2.28 (58)	6.26 (159)	2.05 (52)	0.44 (11.2)	2.60 (66)	STROKE 1/4	6.57 (167)
63mm	1.38 (35)	3.35 (85)	2.52 (64)	0.79 (20)	1.57 (40)	0.39 (10)	0.67 (17)	M10x1.25	0.28 (7)	0.55 (14)	M18x1.5	1.22 (31)	3/8	3.86 (98)	2.28 (58)	6.69 (170)	2.05 (52)	0.44 (11.2)	2.60 (66)		7.01 (178)
80mm	1.57 (40)	4.02 (102)	3.07 (78)	0.98 (25)	2.05 (52)	0.55 (14)	0.83 (21)	M12x1.75	0.43 (11)	0.67 (17)	M22x1.5	1.46 (37)	1/2	4.57 (116)	2.79 (71)	8.03 (204)	2.56 (65)	0.49 (12.5)	3.15 (80)		8.39 (213)
100mm	1.57 (40)	4.57 (116)	3.62 (92)	1.18 (30)	2.05 (52)	0.55 (14)	0.83 (21)	M12x1.75	0.43 (11)	0.67 (17)	M26x1.5	1.57 (40)	1/2	4.96 (126)	2.83 (72)	8.46 (215)	2.56 (65)	0.55 (14)	3.19 (81)		8.82 (224)

*Min. Stroke = 0.79" (20mm) with Boot

Millimeters in Parentheses

CPA1LN

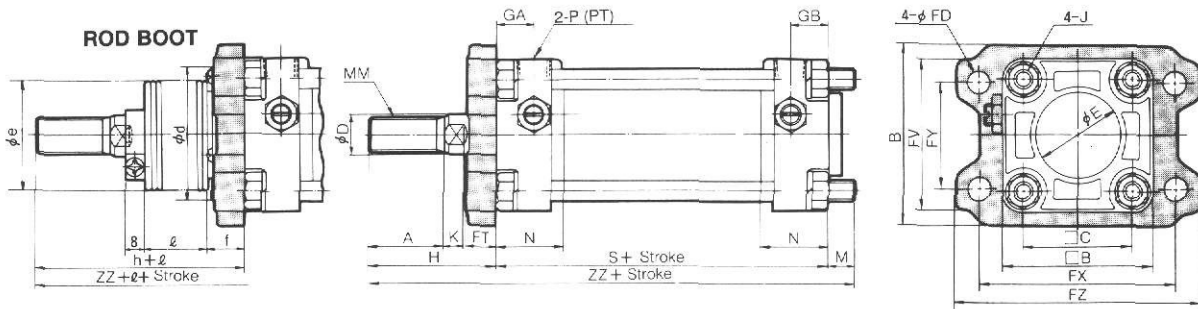


BORE	w/o Boot																with Boot*								
	A	B	C	D	E	F	GA/GB	J	K	MM	N	P	S	X	Y	LD	LH	LS	H	ZZ	oe	f	h	ℓ	zz
50mm	1.38 (35)	2.76 (70)	2.05 (52)	0.79 (20)	1.57 (40)	0.39 (10)	0.67 (17)	M8x1.25	0.28 (7)	M18x1.5	1.18 (30)	3/8	3.54 (90)	1.06 (27)	0.51 (13)	3.54 (90)	1.77 (45)	5.67 (144)	2.28 (58)	7.40 (188)	2.05 (52)	0.44 (11.2)	2.60 (66)	1/4	7.72 (196)
63mm	1.38 (35)	3.35 (85)	2.52 (64)	0.79 (20)	1.57 (40)	0.39 (10)	0.67 (17)	M10x1.25	0.28 (7)	M18x1.5	1.22 (31)	3/8	3.86 (98)	1.34 (34)	0.63 (16)	0.45 (11.5)	1.97 (50)	6.54 (166)	2.28 (58)	8.11 (206)	2.05 (52)	0.44 (11.2)	2.60 (66)	1/4	8.43 (214)
80mm	1.57 (40)	4.02 (102)	3.07 (78)	0.98 (25)	2.05 (52)	0.55 (14)	0.83 (21)	M12x1.75	0.43 (11)	M22x1.5	1.46 (37)	1/2	4.57 (116)	1.73 (44)	0.63 (16)	0.53 (13.5)	2.56 (65)	8.03 (204)	2.80 (71)	9.72 (247)	2.56 (65)	0.49 (12.5)	3.15 (80)	1/4	10.08 (256)
100mm	1.57 (40)	4.57 (116)	3.62 (92)	0.98 (25)	2.05 (52)	0.55 (14)	0.83 (21)	M12x1.75	0.43 (11)	M26x1.5	1.57 (40)	1/2	4.96 (126)	1.69 (43)	0.67 (17)	0.53 (13.5)	2.95 (75)	8.35 (212)	2.83 (72)	10.16 (258)	2.56 (65)	0.55 (14.0)	3.19 (81)	1/4	10.51 (267)

*Min. Stroke = 0.79" (20mm) w/Boot

Millimeters in Parentheses

CPA1FN



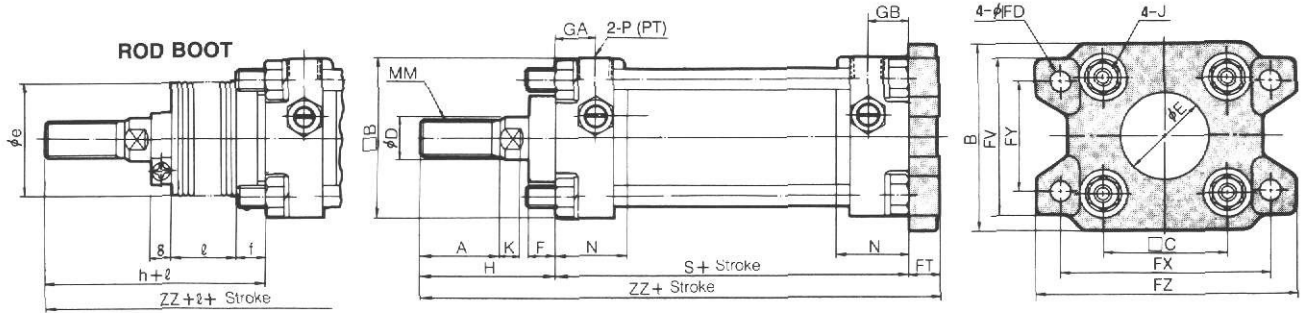
BORE	w/o Boot																with Boot*											
	A	B	□B	C	D	E	GA/GB	J	K	M	MM	N	P	S	FV	FD	FT	FX	FY	FZ	H	ZZ	d†	oe	f	h	ℓ	zz
50mm	1.38 (35)	3.19 (81)	2.76 (70)	2.05 (52)	0.79 (20)	1.57 (40)	0.67 (17)	M8x1.25	0.28 (7)	0.43 (11)	M18x1.5	1.18 (30)	3/8	3.54 (90)	2.76 (70)	0.35 (9.0)	0.47 (12)	3.54 (90)	1.97 (50)	4.33 (110)	2.28 (58)	6.26 (159)	2.28 (58)	2.05 (52)	0.59 (15)	2.60 (66)	1/4	6.57 (167)
63mm	1.38 (35)	3.98 (101)	3.35 (85)	2.52 (64)	0.79 (20)	1.57 (40)	0.67 (17)	M10x1.25	0.28 (7)	0.55 (14)	M18x1.5	1.22 (31)	3/8	3.86 (98)	3.39 (86)	0.45 (11.5)	0.59 (15)	4.13 (105)	2.32 (59)	5.12 (130)	2.28 (58)	6.69 (170)	2.28 (58)	2.05 (52)	0.69 (17.5)	2.60 (66)	1/4	7.01 (178)
80mm	1.57 (40)	4.69 (119)	4.02 (102)	3.07 (78)	0.98 (25)	2.05 (52)	0.83 (21)	M12x1.75	0.43 (11)	0.67 (17)	M22x1.5	1.46 (37)	1/2	4.57 (116)	4.02 (102)	0.53 (13.5)	0.71 (18)	5.12 (130)	2.99 (76)	6.30 (160)	2.80 (71)	8.03 (204)	3.15 (80)	2.56 (65)	0.85 (21.5)	3.15 (80)	1/4	8.39 (213)
100mm	1.57 (40)	5.24 (133)	4.57 (116)	3.62 (92)	1.18 (30)	2.05 (52)	0.83 (21)	M12x1.75	0.43 (11)	0.67 (17)	M26x1.5	1.57 (40)	1/2	4.96 (126)	4.57 (116)	0.53 (13.5)	0.71 (18)	5.91 (150)	3.62 (92)	7.09 (180)	2.83 (72)	8.46 (215)	3.15 (80)	2.56 (65)	0.85 (21.5)	3.19 (81)	1/4	8.82 (224)

Min. Stroke = 0.79" (20mm) with Boot

†Dimension with Boot

Millimeters in Parentheses

CPA1GN

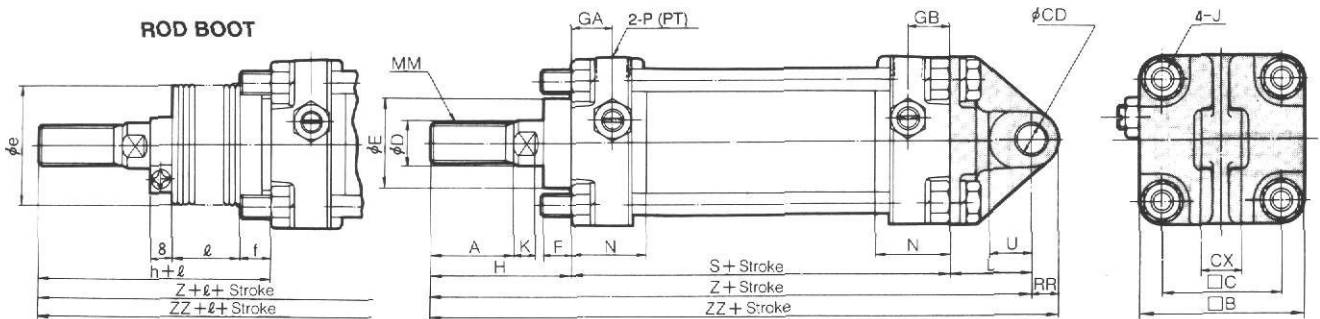


BORE	A	B	□B	C	D	E	F	GA/GB	J	K	MM	N	P	S	FV	FD	FT	FX	FY	FZ	w/o Boot		with Boot*				
																					H	ZZ	øe	f	h	ℓ	zz
50mm	1.38 (35)	3.19 (81)	2.76 (70)	2.05 (52)	0.79 (20)	1.57 (40)	0.39 (10)	0.67 (17)	M8x1.25	0.28 (7)	M18x1.5	1.18 (30)	3/8	3.54 (90)	2.76 (70)	0.35 (9.0)	0.47 (12)	3.54 (90)	1.97 (50)	4.33 (110)	2.28 (58)	6.30 (160)	2.05 (52)	0.44 (11.2)	2.60 (66)	1/4	6.61 (168)
63mm	1.38 (35)	3.98 (101)	3.35 (85)	2.52 (64)	0.79 (20)	1.57 (40)	0.39 (10)	0.67 (17)	M10x1.25	0.28 (7)	M18x1.5	1.22 (31)	3/8	3.86 (98)	3.39 (86)	0.45 (11.5)	0.59 (15)	4.13 (105)	2.32 (59)	5.12 (130)	2.28 (58)	6.73 (171)	2.05 (52)	0.44 (11.2)	2.60 (66)	STR O K E	7.05 (179)
80mm	1.57 (40)	4.69 (119)	4.02 (102)	3.07 (78)	0.98 (25)	2.05 (52)	0.55 (14)	0.83 (21)	M10x1.75	0.43 (11)	M22x1.5	1.46 (37)	1/2	4.57 (116)	4.02 (102)	0.53 (13.5)	0.71 (18)	5.12 (130)	2.99 (76)	6.30 (160)	2.80 (71)	8.07 (205)	2.56 (65)	0.49 (12.5)	3.15 (80)	STR O K E	8.43 (214)
100mm	1.57 (40)	5.24 (133)	4.57 (116)	3.62 (92)	1.18 (30)	2.05 (52)	0.55 (14)	0.83 (21)	M12x1.75	0.43 (11)	M26x1.5	1.57 (40)	1/2	4.96 (126)	4.57 (116)	0.53 (13.5)	0.71 (18)	5.91 (150)	3.62 (92)	7.09 (180)	2.83 (72)	8.50 (216)	2.56 (65)	0.55 (14.0)	3.19 (81)	STR O K E	8.86 (225)

*Min. Stroke = 0.79" (20mm) with Boot

Millimeters in Parentheses

CPA1CN



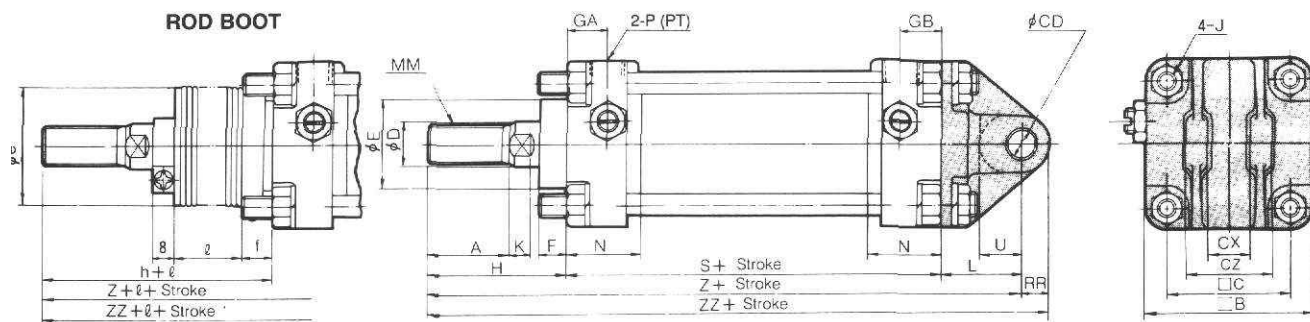
BORE	A	B	C	D	E	F	GA/GB	J	K	L	MM	N	P	RR	S	U	CD	CX	H	w/o Boot		with Boot*							
																				Z	ZZ	øe	f	h	ℓ	z	zz		
50mm	1.38 (35)	2.76 (70)	2.05 (52)	0.79 (20)	1.57 (40)	0.39 (10)	0.67 (17)	M8x1.25	0.28 (7)	1.38 (35)	M18x1.5	1.18 (30)	3/8	0.47 (12)	3.54 (90)	0.75 (19)	0.47 (12)	-0.003 (-0.07)	0.71 (18)	^{-0.0039} _{-0.012} ^{-0.1} _{-0.3}	2.28 (58)	7.20 (183)	7.68 (195)	2.05 (52)	0.44 (11.2)	2.60 (66)	1/4	7.52 (191)	7.99 (203)
63mm	1.38 (35)	3.35 (85)	2.52 (64)	0.79 (20)	1.57 (40)	0.39 (10)	0.67 (17)	M10x1.25	0.28 (7)	1.57 (40)	M18x1.5	1.22 (31)	3/8	0.63 (16)	3.86 (98)	0.91 (23)	0.63 (16)	-0.003 (-0.07)	0.98 (25)	^{-0.0039} _{-0.012} ^{-0.1} _{-0.3}	2.28 (58)	7.72 (196)	8.35 (212)	2.05 (52)	0.44 (11.2)	2.60 (66)	STR O K E	8.03 (204)	8.66 (220)
80mm	1.57 (40)	4.02 (102)	3.07 (78)	0.98 (25)	2.05 (52)	0.55 (14)	0.83 (21)	M12x1.75	0.43 (11)	1.89 (48)	M22x1.5	1.46 (37)	1/2	0.79 (20)	4.57 (116)	1.10 (28)	0.79 (20)	-0.0033 (-0.084)	1.24 (31.5)	^{-0.0039} _{-0.012} ^{-0.1} _{-0.3}	2.80 (71)	9.25 (235)	10.09 (255)	2.56 (65)	0.49 (12.5)	3.15 (80)	STR O K E	9.61 (244)	10.39 (264)
100mm	1.57 (40)	4.57 (116)	3.62 (92)	0.98 (30)	2.05 (52)	0.55 (14)	0.83 (21)	M12x1.75	0.43 (11)	2.28 (58)	M26x1.5	1.57 (40)	1/2	0.98 (25)	4.96 (126)	1.42 (36)	0.98 (25)	-0.0033 (-0.084)	1.40 (35.5)	^{-0.0039} _{-0.012} ^{-0.1} _{-0.3}	2.83 (72)	10.07 (256)	11.06 (281)	2.56 (65)	0.55 (14.0)	3.19 (81)	STR O K E	10.43 (265)	11.42 (290)

*Min. Stroke = 0.79" (20mm) w/Boot

Millimeters in Parentheses

CYLINDER POSITIONING ASSEMBLY DIMENSIONS

PA1DN

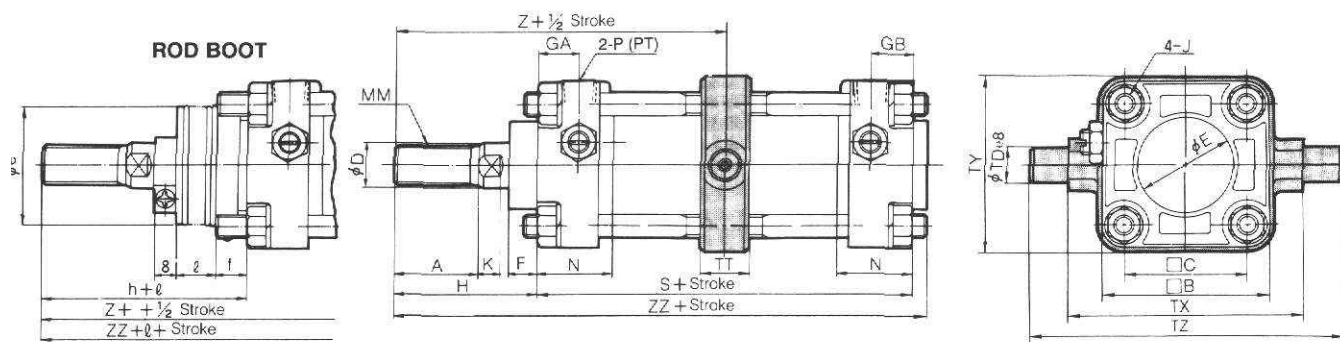


BORE	A	B	C	D	E	F	GA/GB	J	K	L	MM	N	P	RR	S	U	CD	w/o Boot			with Boot *									
																		CX	CZ	H	Z	ZZ	øe	f	h	ℓ	z	zz		
50mm	1.38 (35)	2.76 (70)	2.05 (52)	0.79 (20)	1.57 (40)	0.39 (10)	0.67 (17)	M8x1.25 (7)	0.28 (35)	1.38 (35)	M18x1.5 (30)	1.18 (30)	3/8 (12)	0.47 (90)	3.54 (90)	0.75 (19)	0.47 (12)	-0.003 (-0.070)	0.71 (18.0)	+0.012 -0.0039 +0.3 +0.1	1.46 (37)	2.28 (58)	7.20 (183)	7.68 (195)	2.05 (52)	0.44 (11.2)	2.60 (66)	1/4 (191)	7.52 (203)	7.99
63mm	1.38 (35)	3.35 (85)	2.52 (64)	0.79 (20)	1.57 (40)	0.39 (10)	0.67 (17)	M8x1.25 (7)	0.28 (40)	1.57 (40)	M18x1.5 (31)	1.22 (31)	3/8 (16)	0.63 (98)	3.85 (98)	0.91 (23)	0.63 (16)	-0.003 -0.070	0.98 (25.0)	+0.012 -0.0039 +0.3 +0.1	1.89 (48)	2.28 (58)	7.72 (196)	8.35 (212)	2.05 (52)	0.44 (11.2)	2.60 (66)	1/4 (204)	8.03 (220)	8.66
80mm	1.57 (40)	4.02 (102)	3.07 (78)	0.98 (25)	2.05 (52)	0.55 (14)	0.83 (21)	M12x1.75 (11)	0.43 (48)	1.89 (48)	M22x1.5 (37)	1.46 (37)	1/2 (20)	0.79 (116)	4.57 (116)	1.10 (28)	0.79 (20)	-0.0033 +0.084	1.24 (31.5)	+0.012 -0.0039 +0.3 +0.1	2.36 (60)	2.80 (71)	9.25 (235)	10.04 (255)	2.56 (65)	0.49 (12.5)	3.15 (80)	1/4 (244)	9.61 (264)	10.39
100mm	1.57 (40)	4.57 (116)	3.62 (92)	1.18 (30)	2.05 (52)	0.55 (14)	0.83 (21)	M12x1.75 (11)	0.43 (58)	2.28 (58)	M26x1.5 (40)	1.57 (40)	1/2 (25)	0.98 (126)	4.96 (126)	1.42 (36)	0.98 (25)	-0.0033 +0.084	1.40 (35.5)	+0.012 -0.0039 +0.3 +0.1	2.56 (65)	2.83 (72)	10.08 (256)	11.06 (281)	2.56 (65)	0.55 (14.0)	3.19 (81)	1/4 (265)	10.43 (290)	11.42

Min. Stroke = 0.79" (20mm) w/Boot

Millimeters in Parentheses

PA1TN



BORE	A	B	C	D	E	F	GA/GB	J	K	MM	N	P	S	øTDø8	TT	TX	TY	TZ	w/o Boot			with Boot*						
																			H	Z	ZZ	øe	f	h	ℓ	z	zz	
1mm	1.38 (35)	2.76 (70)	2.05 (52)	0.79 (20)	1.57 (40)	0.39 (10)	0.67 (17)	M8x1.25 (7)	0.28 (7)	M18x1.5 (30)	1.18 (30)	3/8 (15)	3.54 (90)	0.59 (15)	1.18 (30)	3.7 (95)	2.99 (76)	5.31 (135)	2.28 (58)	4.06 (103)	6.06 (154)	2.05 (52)	0.44 (11.2)	2.60 (66)	1/4 (111)	4.37 (111)	6.38 (162)	
1mm	1.38 (35)	3.35 (85)	2.52 (64)	0.79 (20)	1.57 (40)	0.39 (10)	0.67 (17)	M10x1.25 (7)	0.28 (4)	M18x1.5 (31)	1.22 (31)	3/8 (18)	3.86 (98)	0.71 (18)	1.57 (40)	4.33 (110)	3.62 (92)	6.30 (160)	2.28 (58)	4.21 (107)	6.46 (164)	2.05 (52)	0.44 (11.2)	2.60 (66)	1/4 (115)	4.53 (115)	6.77 (172)	
1mm	1.57 (40)	4.02 (102)	3.07 (78)	0.98 (25)	2.05 (52)	0.55 (14)	0.83 (21)	M12x1.75 (11)	0.43 (7)	M22x1.5 (37)	1.46 (37)	1/2 (25)	4.57 (116)	0.98 (25)	1.77 (45)	5.51 (140)	4.41 (112)	7.87 (200)	2.79 (71)	5.08 (129)	7.64 (194)	2.55 (65)	0.49 (12.5)	3.15 (80)	1/4 (138)	5.43 (138)	7.99 (203)	
0mm	1.57 (40)	4.57 (116)	3.62 (92)	1.18 (30)	2.05 (52)	0.55 (14)	0.83 (21)	M12x1.75 (11)	0.43 (11)	M26x1.5 (40)	1.57 (40)	1/2 (25)	4.96 (126)	0.98 (25)	1.97 (50)	6.38 (162)	5.35 (136)	8.74 (222)	2.83 (72)	5.31 (135)	8.11 (206)	2.55 (65)	0.55 (14.0)	3.19 (81)	1/4 (144)	5.67 (144)	8.46 (215)	

n. Stroke = 0.79" (20mm) with Boot

Millimeters in Parentheses

SERIES CP

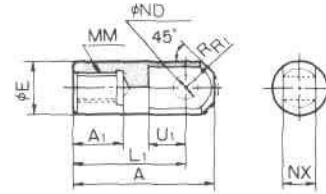
CYLINDER POSITIONING ASSEMBLY

**DIMENSIONS
REPAIR KITS**

SINGLE CLEVIS

BORE	PART #	A	A ₁	φE	L ₁	MM	R ₁	V ₁	φND	NX
50 mm	I-05	2.91 (74)	1.06 (27)	1.10 (28)	2.36 (60)	M18x1.5	0.61 (15.5)	0.79 (20)	0.47 + 0.003 (12 + 0.070)	0.63 ^{+0.0039} _{-0.012} (16 ^{-0.1} _{-0.3})
63 mm	I-05	2.91 (74)	1.06 (27)	1.10 (28)	2.36 (60)	M18x1.5	0.61 (15.5)	0.79 (20)	0.47 + 0.003 (12 + 0.070)	0.63 ^{+0.0039} _{-0.012} (16 ^{-0.1} _{-0.3})
80 mm	I-08	3.58 (91)	1.46 (37)	1.42 (36)	2.80 (71)	M22x1.5	0.89 (22.5)	1.02 (26)	0.71 + 0.003 (18 + 0.070)	1.10 ^{+0.0039} _{-0.012} (28 ^{-0.1} _{-0.3})
100 mm	I-10	4.13 (105)	1.46 (37)	1.57 (40)	3.27 (83)	M26x1.5	0.96 (24.5)	1.10 (28)	0.79 + 0.0033 (20 + 0.084)	1.18 ^{+0.0039} _{-0.012} (30 ^{-0.1} _{-0.3})

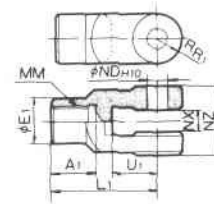
Millimeters in Parentheses



DOUBLE CLEVIS

BORE	PART #	A ₁	φE ₁	L ₁	MM	R ₁	V ₁	φND	NX	NZ
50 mm	Y-05A	1.06 (27)	1.10 (28)	2.36 (60)	M18x1.5	0.59 (15)	1.06 (27)	0.47 + 0.003 (12 + 0.070)	0.63 ^{+0.012} _{-0.0039} (16 ^{+0.3} _{-0.1})	1.50 (38)
63 mm	Y-05A	1.06 (27)	1.10 (28)	2.36 (60)	M18x1.5	0.59 (15)	1.06 (27)	0.47 + 0.003 (12 + 0.070)	0.63 ^{+0.012} _{-0.0039} (16 ^{+0.3} _{-0.1})	1.50 (38)
80 mm	Y-08A	1.46 (37)	1.42 (36)	2.80 (71)	M22x1.5	0.75 (19)	1.10 (28)	0.71 + 0.003 (18 + 0.070)	0.63 ^{+0.012} _{-0.0039} (28 ^{+0.3} _{-0.1})	2.17 (55)
100 mm	Y-10A	1.46 (37)	1.57 (40)	3.27 (83)	M26x1.5	0.83 (21)	1.50 (38)	0.79 + 0.0033 (20 + 0.084)	0.63 ^{+0.012} _{-0.0039} (30 ^{+0.3} _{-0.1})	2.40 (61)

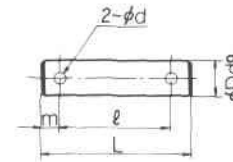
Millimeters in Parentheses



CLEVIS PIN

PART # NUMBER	REAR CLEVIS BORE	ROD CLEVIS BORE	DIMENSIONS					
			φDd9	L	ℓ	m	φd	
CDP-3A	50	40, 50, 63	0.47 ^{-0.002} _{-0.0037}	2.19	1.87	0.16	0.12	
			(12 ^{-0.050} _{-0.093})	(55.5)	(47.5)	(4)	(3)	
CDP-4A	63	—	0.63 ^{-0.002} _{-0.0037}	2.80	2.40	0.20	0.16	
			(16 ^{-0.050} _{-0.093})	(71)	(61)	(5)	(4)	
CDP-5A	—	80	0.71 ^{-0.0020} _{-0.0037}	3.01	2.62	0.20	0.16	
			(18 ^{-0.050} _{-0.093})	(76.5)	(66.5)	(5)	(4)	
CDP-6A	80	100	0.79 ^{-0.0026} _{-0.0046}	3.27	2.87	0.20	0.16	
			(20 ^{-0.065} _{-0.117})	(83)	(73)	(5)	(4)	
CDP-7A	100	—	0.98 ^{-0.0026} _{-0.0046}	3.46	3.07	0.20	0.16	
			(25 ^{-0.065} _{-0.117})	(88)	(78)	(5)	(4)	

inches (mm)



REPAIR

Actuator Assembly #IP200-02

Actuator Repair Kit #IP200-RP

Consists of:

- 1 - Back Pressure Diaphragm
- 1 - Supply Diaphragm
- 1 - Input Diaphragm
- 1 - Packing
- 4 - Spool & Sleeve "O" Rings
- 1 - Fixed Orifice "O" Ring

Cylinder Repair Kits
(All rubber seals)

Bores	Part #
50mm	CA1N50-PS
63mm	CA1N63-PS
80mm	CA1N80-PS
100mm	CA1N100-PS

Consult factory regarding Repair Manual

Gauges

Supply Pressure G 43-10-01
Signal Pressure G 43-2-01



SMC Pneumatics, Inc.

3011 N. FRANKLIN ROAD, INDIANAPOLIS, IN 46226

TEL: 317-899-4440 FAX: 317-899-3102

For a branch office near you call: 1800-SMC-SMC1 (762-7621)