



Operation Manual

PRODUCT NAME

Electric Rotary Table

MODEL/ Series

LER Series



<Controller>
LEC Series

SMC Corporation

Safety Instructions	2
1. Procedure before operation/simple setting to use straight away... 4	
1.1 Preparation	4
1.2 Controller setting software version.....	5
1.3 Teaching box.....	7
2. Electric Rotary Table /LER Series	9
2.1 Specification.....	9
2.2 How to Order	10
2.3 Construction	11
3. Product Outline	13
3.1 System construction	13
3.2 Setting Function.....	14
3.3 Step data setting method	17
Positioning operation	17
Pushing operation.....	19
Operating procedure and input / output signals for each operation.....	25
3.4 Parameter setting method.....	27
Initial setting for the basic parameters.....	27
Initial setting for the ORIG parameters.....	28
4. Wiring of cables / Common precautions.....	29
5. Electric actuators / Common precautions	30
5.1 Design and selection	30
5.2 Mounting.....	31
5.3 Handling	31
5.4 Operating environment	33
5.5 Maintenance	33
6. Electric Rotary Table /Specific Product Precautions	35
6.1 Design and selection	35
6.2 Mounting.....	35
6.3 Handling	36
6.4 Maintenance	37
7. Troubleshooting	38



LER Series/Electric Rotary Table Safety Instructions

These safety instructions are intended to prevent hazardous situations and/or equipment damage. These instructions indicate the level of potential hazard with the labels of "Caution," "Warning" or "Danger." They are all important notes for safety and must be followed in addition to International Standards (ISO/IEC), Japan Industrial Standards (JIS)*1) and other safety regulations*2).

*1) ISO 4414: Pneumatic fluid power -- General rules relating to systems

ISO 4413: Hydraulic fluid power -- General rules relating to systems

IEC 60204-1: Safety of machinery -- Electrical equipment of machines (Part 1: General requirements)

ISO 10218-1992: Manipulating industrial robots -- Safety

JIS B 8370: General rules for pneumatic equipment.

JIS B 8361: General rules for hydraulic equipment.

JIS B 9960-1: Safety of machinery -- Electrical equipment for machines. (Part 1: General requirements)

JIS B 8433-1993: Manipulating industrial robots - Safety. etc.

*2) Labor Safety and Sanitation Law, etc.



Caution

Caution indicates a hazard with a low level of risk which, if not avoided, could result in minor or moderate injury.



Warning

Warning indicates a hazard with a medium level of risk which, if not avoided, could result in death or serious injury.



Danger

Danger indicates a hazard with a high level of risk which, if not avoided, will result in death or serious injury.

Warning

1. The compatibility of the product is the responsibility of the person who designs the equipment or decides its specifications.

Since the product specified here is used under various operating conditions, its compatibility with specific equipment must be decided by the person who designs the equipment or decides its specifications based on necessary analysis and test results.

The expected performance and safety assurance of the equipment will be the responsibility of the person who has determined its compatibility with the product.

This person should also continuously review all specifications of the product referring to its latest catalog information, with a view to giving due consideration to any possibility of equipment failure when configuring the equipment.

2. Only personnel with appropriate training should operate machinery and equipment.

The product specified here may become unsafe if handled incorrectly.

The assembly, operation and maintenance of machines or equipment including our products must be performed by an operator who is appropriately trained and experienced.

3. Do not service or attempt to remove product and machinery/equipment until safety is confirmed.

The inspection and maintenance of machinery/equipment should only be performed after measures to prevent falling or runaway of the driven objects have been confirmed.

When the product is to be removed, confirm that the safety measures as mentioned above are implemented and the power from any appropriate source is cut, and read and understand the specific product precautions of all relevant products carefully.

Before machinery/equipment is restarted, take measures to prevent unexpected operation and malfunction.

4. Contact SMC beforehand and take special consideration of safety measures if the product is to be used in any of the following conditions.

1) Conditions and environments outside of the given specifications, or use outdoors or in a place exposed to direct sunlight.

2) Installation on equipment in conjunction with atomic energy, railways, air navigation, space, shipping, vehicles, military, medical treatment, combustion and recreation, or equipment in contact with food and beverages, emergency stop circuits, clutch and brake circuits in press applications, safety equipment or other applications unsuitable for the standard specifications described in the product catalog.

3) An application which could have negative effects on people, property, or animals requiring special safety analysis.

4) Use in an interlock circuit, which requires the provision of double interlock for possible failure by using a mechanical protective function, and periodical checks to confirm proper operation.



LEH Series/Electric Rotary Table Safety Instructions

Caution

The product is provided for use in manufacturing industries.

The product herein described is basically provided for peaceful use in manufacturing industries.

If considering using the product in other industries, consult SMC beforehand and exchange specifications or a contract if necessary.

If anything is unclear, contact your nearest sales branch.

Limited warranty and Disclaimer/Compliance Requirements

The product used is subject to the following “Limited warranty and Disclaimer” and “Compliance Requirements”.

Read and accept them before using the product.

Limited warranty and Disclaimer

The warranty period of the product is 1 year in service or 1.5 years after the product is delivered.*3) Also, the product may have specified durability, running distance or replacement parts. Please consult your nearest sales branch.

For any failure or damage reported within the warranty period which is clearly our responsibility, a replacement product or necessary parts will be provided.

This limited warranty applies only to our product independently, and not to any other damage incurred due to the failure of the product.

Prior to using SMC products, please read and understand the warranty terms and disclaimers noted in the specified catalog for the particular products.

***3) Vacuum pads are excluded from this 1 year warranty.**

A vacuum pad is a consumable part, so it is warranted for a year after it is delivered.

Also, even within the warranty period, the wear of a product due to the use of the vacuum pad or failure due to the deterioration of rubber material are not covered by the limited warranty.

Compliance Requirements

When the product is exported, strictly follow the laws required by the Ministry of Economy, Trade and Industry (Foreign Exchange and Foreign Trade Control Law).

1. Procedure before operation/simple setting to use straight away

The controller is already set with the data of the actuator.

With the simple setting “easy mode”, it can be operated and running parameters can be changed easily.

1.1 Preparation

(1) Items to be prepared

Please check on the label, and the quantity of accessories, to confirm that it is the product that was ordered.

Table 1. Components

No.	Part name	Qty
(1)	Electric Rotary Table	1
(2)	Controller	1
(3)	Power supply plug	1
(4)	Actuator cable	1
(5)	I/O cable (Not use in this section)	1
(6)	Teaching box	1
(7)	Controller setting kit [The controller setting software, The communication cable, USB cable and conversion unit are included.] Setting software / version 1.1 or higher	1

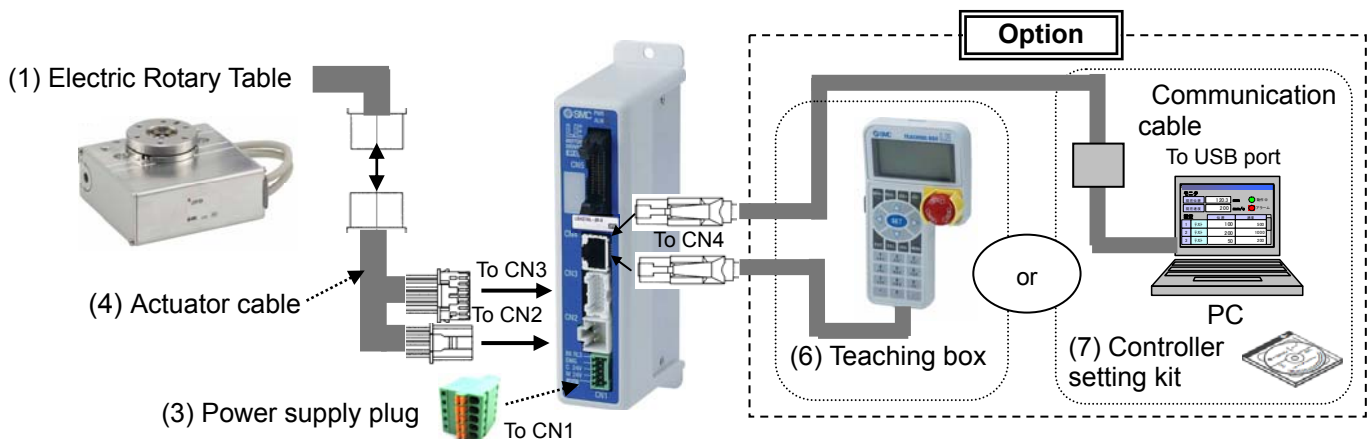
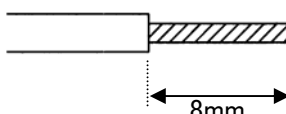
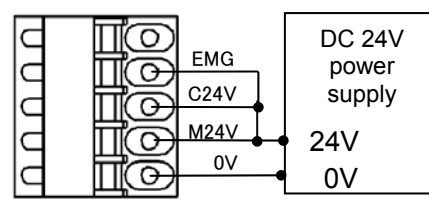


Table 2. Items to be prepared by the customer

Part name	Conditions
Power supply 24VDC Except “inrush-current restraining type”	Refer to power consumption of each actuator
Wire AWG20 (0.5mm ²)	Stripped wire length 
Power supply plug Wiring	<p>Connect the plus side of DC 24V to the C24V, M24V and EMG terminals of the power supply plug, and the minus side to the 0V terminal.</p> <p>Push the open/ close lever and insert the wire into the electrical wire entry.</p>  <p>Electrical wire entry</p>

1.2 Controller setting software version

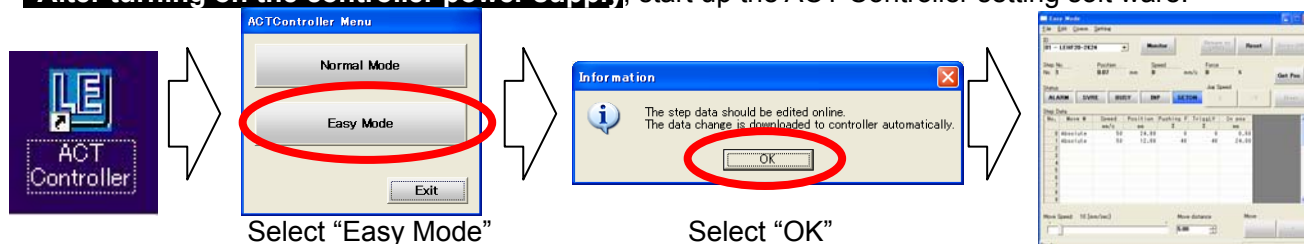
(1) Installation of software

With the controller setting software CD-ROM, install the communication unit software, following the "Software Installation procedure" (PDF)

※ When the controller setting software/version is below 1.1, the display unit is distance (mm), but the product recognizes it as an angle(°). To upgrade the software, please go to the operation manual page of the SMC website. <http://www.smcworld.com/>

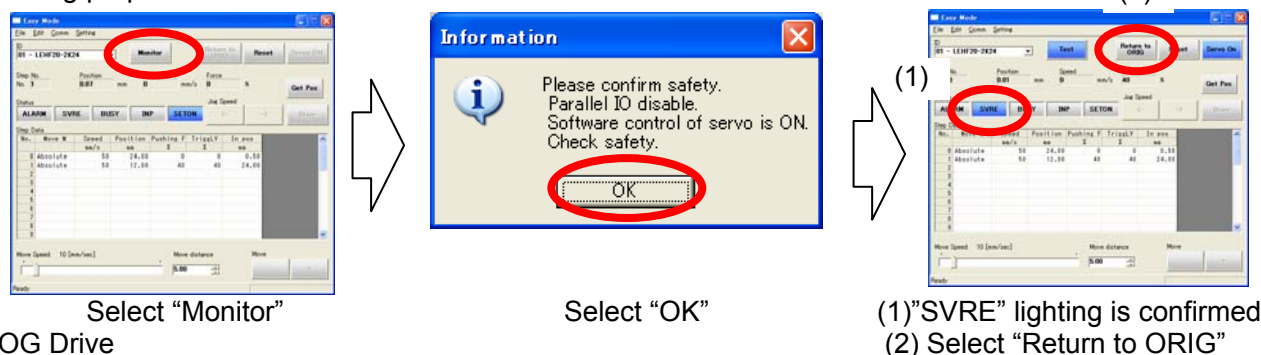
(2) Startup of software

After turning on the controller power supply, start up the ACT Controller setting software.

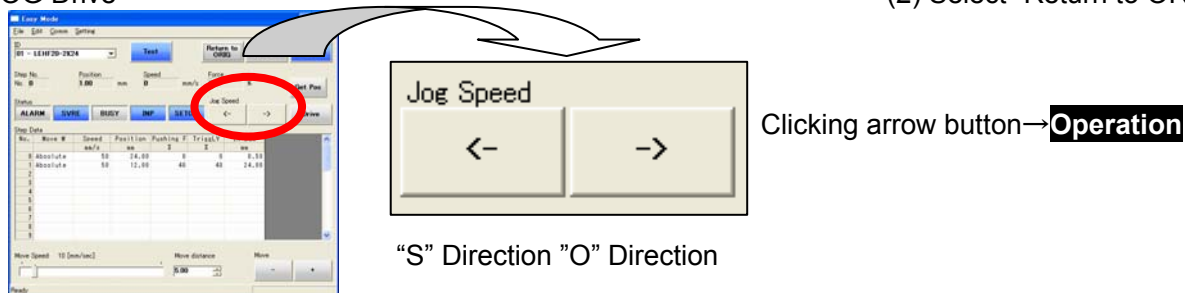


3) JOG Drive

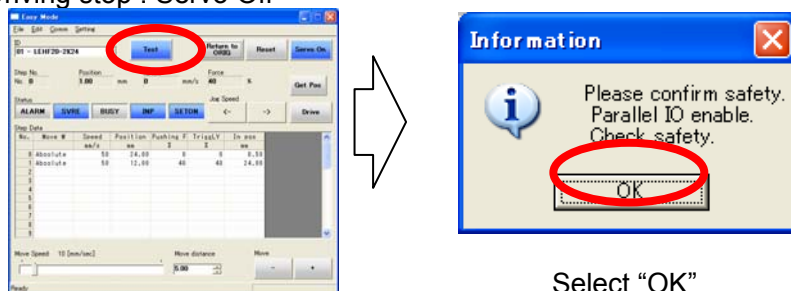
a. Driving preparation : Servo On → Return to ORIG



b. JOG Drive



c. Driving stop : Servo Off



Caution

If an alarm is generated

(1) When "ALARM" is generated, release it by selecting (2) Reset.

In the case of an alarm code that cannot be released with "Reset", turn the power supply OFF and ON again.

Note) For details of alarm codes, refer to the Controller Operation Manual.



(4) TEST Drive / Step No.0 → No.1 → No.0...

a. Driving preparation : Servo On → Return to ORIG / Refer to “3.JOG Drive”.

b.TEST Drive

“Step No.0” Operation

Procedure 1:
Select “Step No.0”
You can select
anywhere in the row



Procedure 2:
Select “Drive”

→ **Operation**

“Step No.1” Operation

Procedure 3:
Select “Step No.1”
You can select
anywhere in the row



Procedure 4:
Select “Drive”

→ **Operation**

c.Driving stop : Servo Off / Refer to “3.JOG Drive”.

(5) Step data change

Ex) “Step No.0” / Positioning operation

Step Data

No.	Move M	Speed °/s	Position °	Pushing F %	TriggLV %	In pos °
0	ABS	200	0.00	0	0	0.50

Change of positioning speed
Speed: 200°/s→50°/s



Input “50”

Step Data

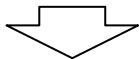
No.	Move M	Speed °/s	Position °	Pushing F %	TriggLV %	In pos °
0	ABS	50	0.00	0	0	0.50

Ex) “Step No.1” / Positioning operation

Step Data

No.	Move M	Speed °/s	Position °	Pushing F %	TriggLV %	In pos °
0	ABS	50	0.00	0	0	0.50
1	ABS	200	180.00	0	0	0.50

Change of pushing start position
Position: 180°→ 90°



Input “90”

Step Data

No.	Move M	Speed °/s	Position °	Pushing F %	TriggLV %	In pos °
0	ABS	50	0.00	0	0	0.50
1	ABS	200	90.00	0	0	0.50

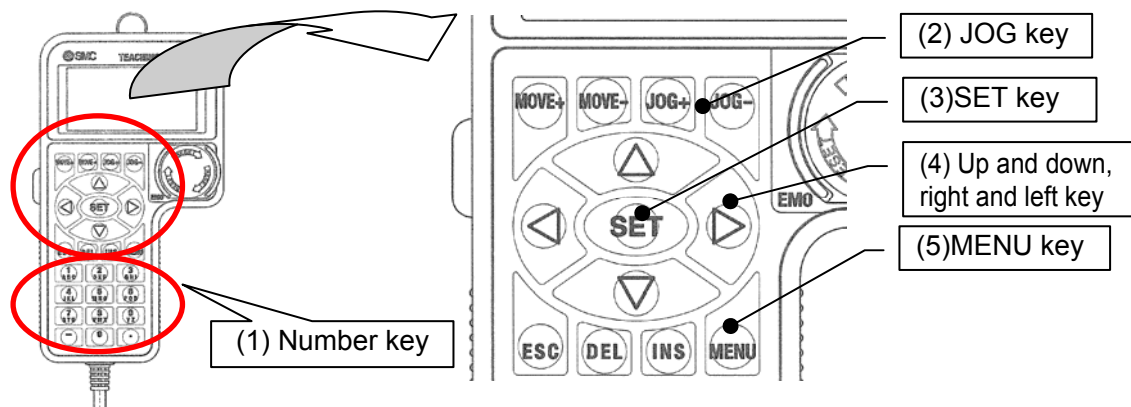
For details of operation, and relationship between operation procedure and input/output signals, refer to “3.3 Step Data setting method” p. 17 to 26.

(6) Controller setting software screen explanation

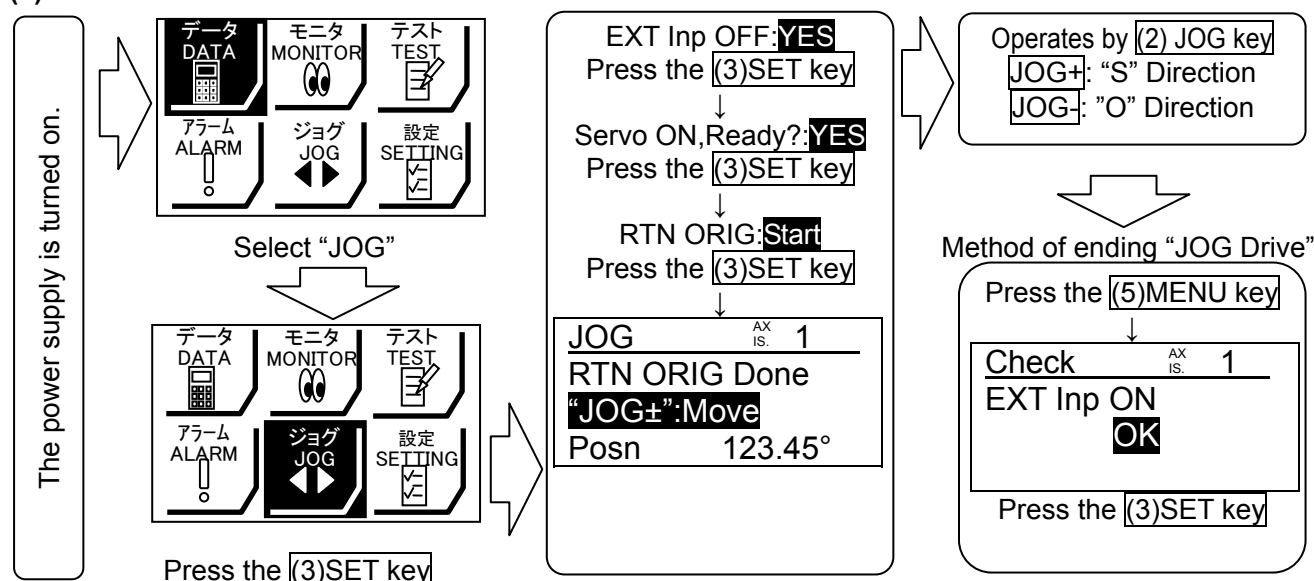
Refer to the “Help / Easy mode” menu in the “ACT Controller” setting software.

1.3 Teaching box

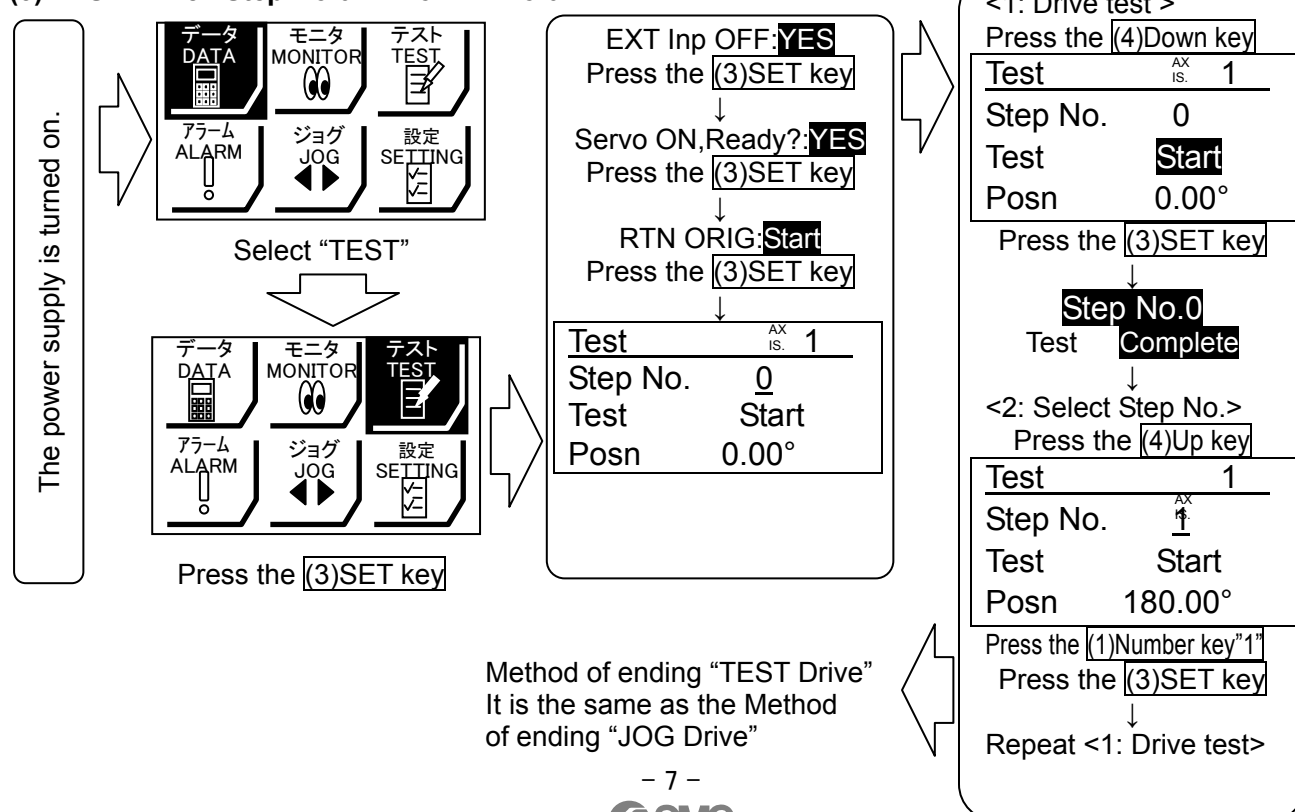
(1) Name



(2) JOG Drive

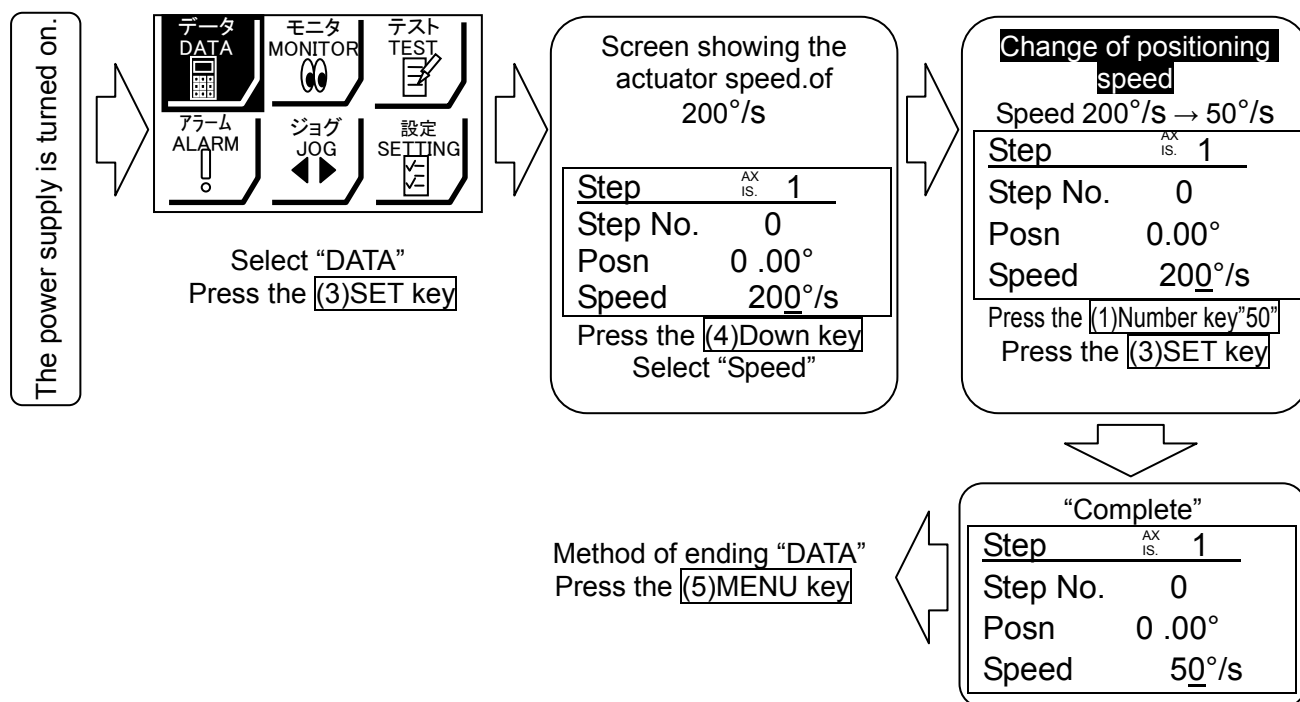


(3) TEST Drive / Step No.0 → No.1 → No.0...

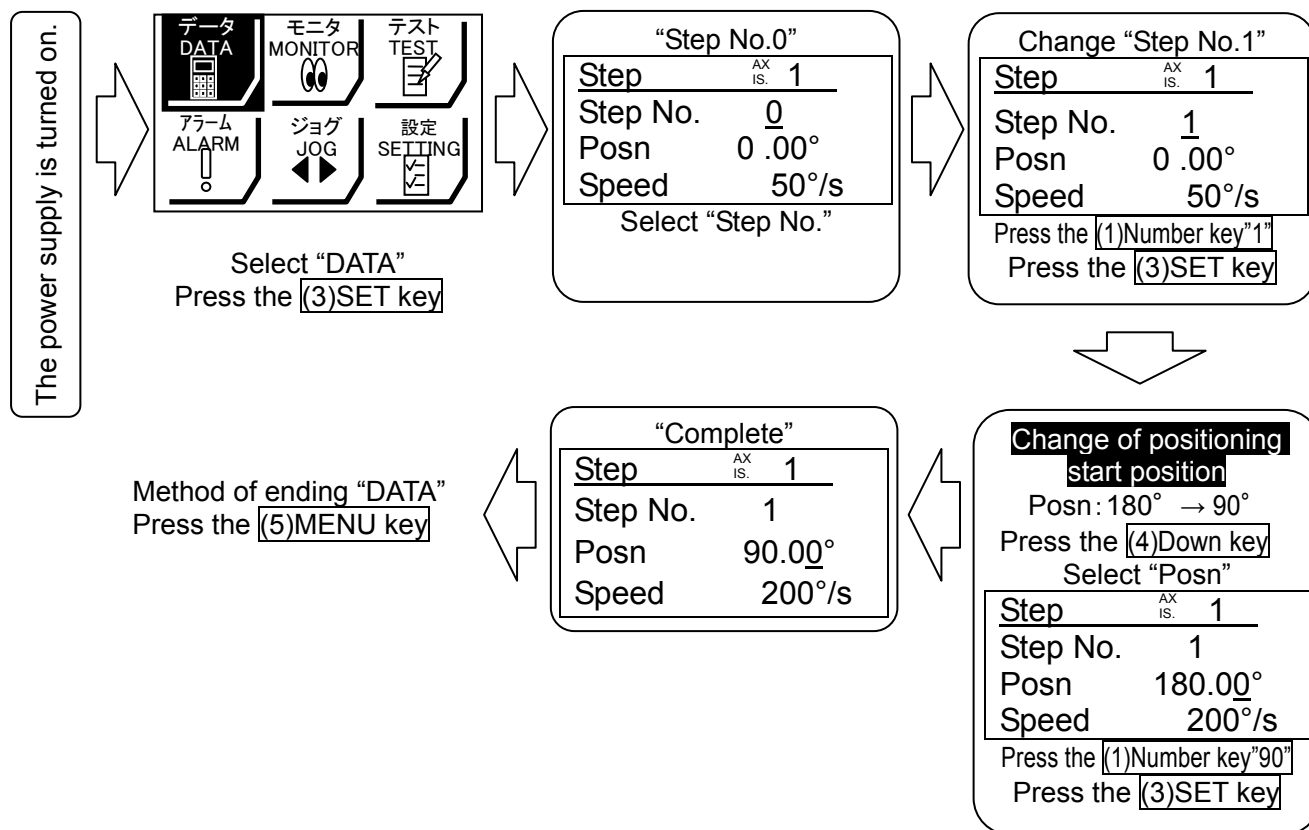


(4) Step data change

“Step No.0” / Positioning operation



“Step No.1” / Positioning operation



For details of operation, and relationship between operation procedure and input/output signals, refer to 3.3 “Step Data” setting method p. 17 to 26.

(5) Teaching box detailed explanation

Please refer to the teaching box manual.

2. Electric Rotary Table /LER Series

2.1 Specification

Model			LER*10K	LER*10J	LER*30K	LER*30J	LER*50K	LER*50J
Actuator specification / Basic	Rotation Angle (°)		310		320			
	Max. Rotation Torque(N·m)		0.3	0.2	1.2	0.8	10.0	6.6
	Max. Pushing Torque(N·m) ^{Note 1)}		0.15	0.1	0.6	0.4	5.0	3.3
	Max. Moment of Inertia(kg·m ²) ^{Note 2)}		0.004	0.0018	0.027	0.012	0.10	0.04
	Rotation Speed(°/sec) ^{Note 2)}		20to280	30to420	20to280	30to420	20to280	30to420
	Pushing Speed(°/sec)		20	30	20	30	20	30
	Angular acceleration/ Angular deceleration(°/sec ²) ^{Note 2)}		3,000					
	Backlash(°)		± 0.5					
	Repeatability (°)		± 0.05					
	Impact resistance/vibration resistance (m/sec ²) ^{Note 3)}		150/30					
	Drive method		Worm gear and belt					
	Table allowable load	Radial load (N)	Basic	78	196		314	
			High precision	86	233		378	
		Thrust load /Push(N)	Basic	78	363		451	
			High precision	107	398		517	
		Thrust load /Pull(N)	Basic	74	197		296	
			High precision					
		Moment (N·m)	Basic	5.3		9.7		
			High precision	6.4		12.0		
	Max. operating frequency(c.p.m)		60					
	Operating temperature range (°C)		5 to 40					
	Operating humidity range (%)		35 to 85 (No condensation or freezing)					
	Weight (kg)	Basic	0.49	1.1		2.2		
		High precision	0.52	1.2		2.4		
External stopper	Rotation Angle (°)	*(-2) with 1 Arm	180					
		*(-3) with 2 Arms	90					
	Repeatability at the end (°)		±0.01					
	Range of external stopper(°)		±2					
	Weight (kg)	*(-2) with 1 Arm	Basic	0.55	1.2		2.5	
			High precision	0.61	1.4		2.7	
		*(-3) with 2 Arms	Basic	0.57	1.2		2.6	
			High precision	0.63	1.4		2.8	
Electric specification	Motor size		□20	□28		□42		
	Motor		Step motor (Servo 24VDC)					
	Encoder (Angular displacement sensor)		Incremental A/B phase (800 pulse/rotation)					
	Rated voltage(VDC)		24 ± 10%					
	Power consumption(W) ^{Note 4)}		11	22		34		
	Standby power consumption when operating(W) ^{Note 5)}		7	12		13		
	Moment max. power consumption(W) ^{Note 6)}		19	42		57		
	Controller weight (kg)		0.15 (Screw mounting type) , 0.17 (DIN rail mounting type)					

* Order code option for rotation angle

Note 1) Pushing Torque accuracy should be ±30%(F.S.) for LER10, ±25%(F.S.) for LER30, ±20%(F.S.) for LER50.

Note 2) The Angular acceleration, angular deceleration and angular speed may fluctuate due to variations in the moment of inertia.

Note 3) Impact resistance: No malfunction occurred when the rotary actuator was tested with a drop tester in both an axial direction and a perpendicular direction to the lead screw.

(The test was performed with the rotary actuator in the initial state)

Vibration resistance: No malfunction occurred in a test ranging between 45 to 2000 Hz. Test was performed in both an axial direction and a perpendicular direction to the lead screw. (The test was performed with the rotary actuator in the initial state)

Note 4) The "Power consumption" (including the controller) is for when the actuator is operating.

Note 5) The "Standby power consumption when operating" (including the controller) is for when the actuator is stopped in the set position during the operation, except for during the pushing operation.

Note 6) The "Momentary max. power consumption" (including the controller) is for when the actuator is operating. This value can be used for the selection of the power supply.

2.2 How to Order

LER ☐ 10 K - ☐ ☐ - R 1 6N 1 ☐

● Table accuracy

Nil	Basic
H	High precision

● Size

10
30
50

● Max. Rotation Torque(N·m)

Type	LER10	LER30	LER50	
K	High torque	0.3	1.2	10
J	Basic	0.2	0.8	6.6

● Rotation angle(°)

	LER10	LER30	LER50
Nil	310	320	
2	180		
3	90		

● Motor cable entry

Nil	Basic (Entry on the right side)
L	Entry on the left side

● Controller option

Nil	Screw mounting type
D	DIN rail mounting type

● I/O cable length(m)

Nil	Without cable
1	1.5
3	3
5	5

● Controller

Nil	Without controller
6N	With controller (NPN)
6P	With controller (PNP)

● Actuator cable length(m)

Nil	Without cable	8	8 *
1	1.5	A	10 *
3	3	B	15 *
5	5	C	20 *


*produced upon receipt of order

● Actuator cable

Nil	Without cable
R	Robotic type cables (Flexible type cables)

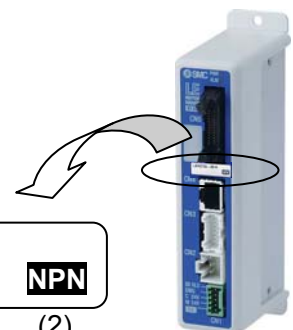
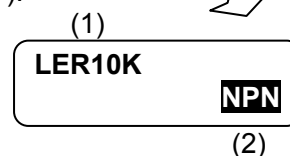
Caution

The actuator body and controller are sold as a package.

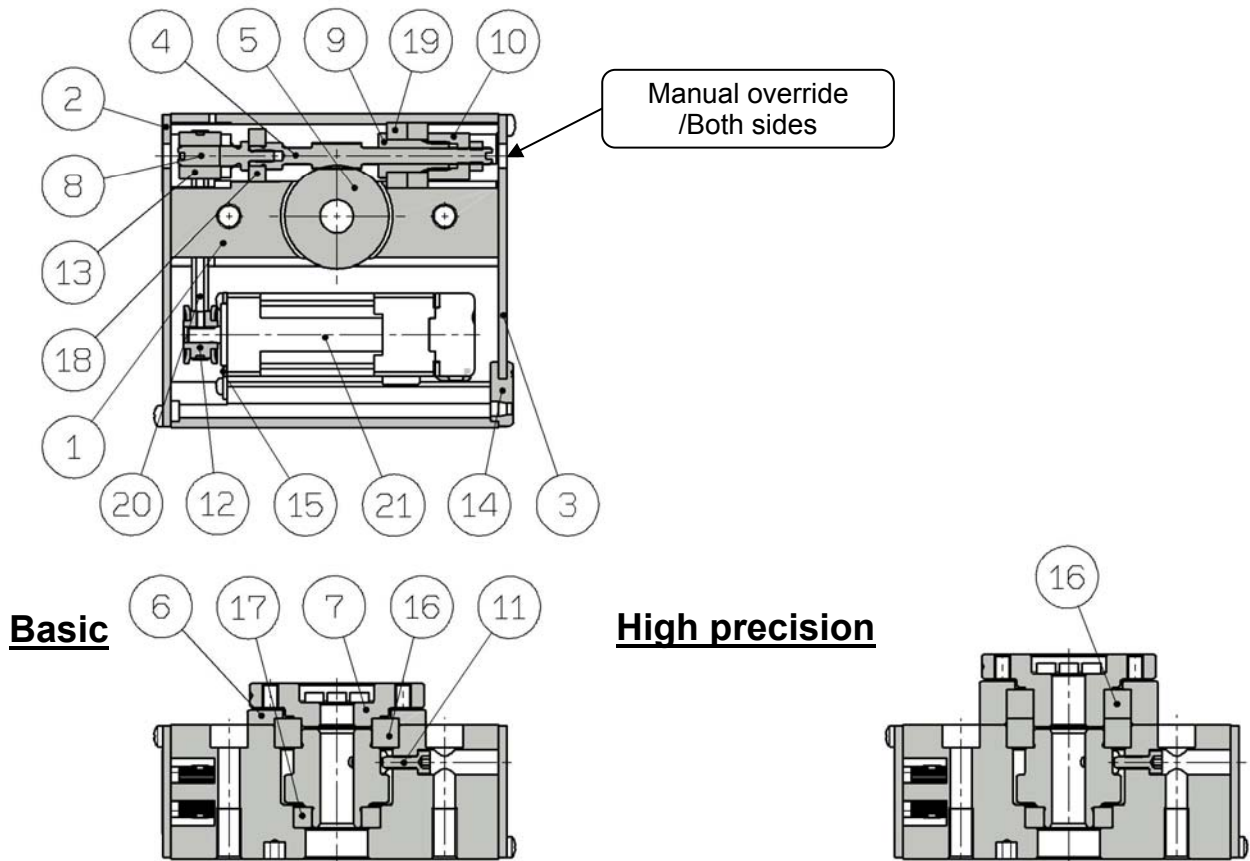
If When only the actuator is purchased separately, confirm that the combination of the controller, which you have and the actuator is compatible. / See 5.3  Caution (1) on p. 32

<Be sure to check the following before use.>

- (1) Check that actuator label for model number.
This matches the controller.
- (2) Check Parallel I/O configuration matches (NPN or PNP).



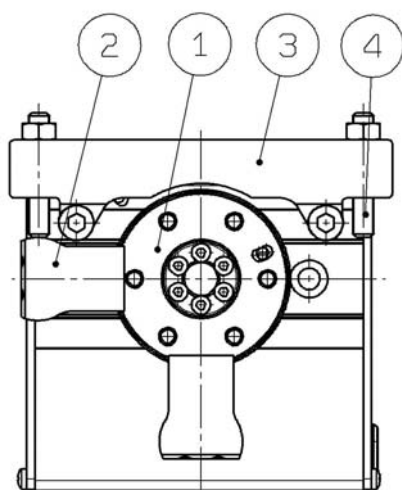
2.3 Construction



Parts list

No.	Part		Material	Remarks
1	Body		Aluminium alloy	Anodized
2	Side plate A		Aluminium alloy	Anodized
3	Side plate B		Aluminium alloy	Anodized
4	Worm screw		Stainless steel	Heat treated, Specially treated
5	Worm wheel		Stainless steel	Heat treated, Specially treated
6	Bearing cover		Aluminium alloy	Anodized
7	Table		Aluminium alloy	Anodized
8	Joint		Stainless steel	
9	Bearing holder		Aluminium alloy	
10	Bearing retainer		Aluminium alloy	
11	Starting point bolt		Carbon steel	
12	Pulley A		Aluminium alloy	
13	Pulley B		Aluminium alloy	
14	Grommet		NBR	
15	Motor plate		Carbon steel	
16	Basic	Deep groove ball bearing	-	
	High precision	Special ball bearing	-	
17	Deep groove ball bearing		-	
18	Deep groove ball bearing		-	
19	Deep groove ball bearing		-	
20	Belt		-	
21	Step motor (Servo/24VDC)		-	

External stopper

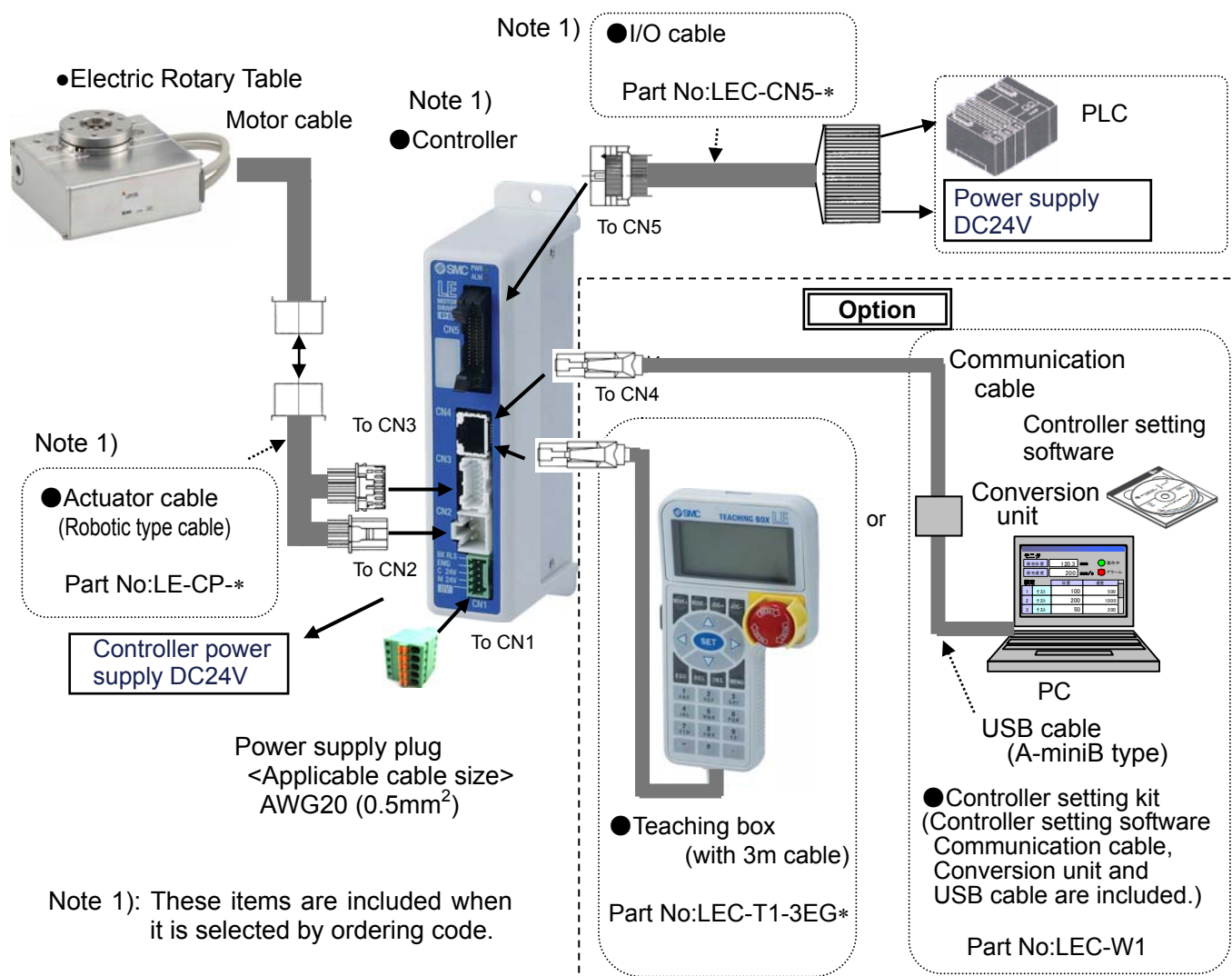


Parts list

No.	Part	Material	Remarks
1	Table	Aluminium alloy	Anodized
2	Arm	Carbon steel	Nickel plated
3	Holder	Aluminium alloy	Anodized
4	Adjustment bolt	Carbon steel	Chromating

3. Product Outline

3.1 System construction



※ When the controller setting software/version is below 1.1, the display unit is distance (mm), but the product recognizes it as an angle (°). To upgrade the software, please go to the operation manual page of the SMC website. <http://www.smcworld.com/>

Warning

Refer to the operation manual of the LEC (controller) for detailed wiring.

/See 4 Wiring of cables on p.29.

Communication cable is to be connected to PC by USB cable through conversion unit. And do not connect teaching box to PC.

Use only specified cables otherwise there maybe fire risk and damage.

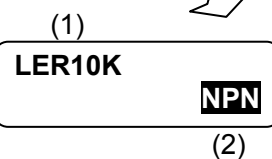
The actuator body and controller are sold as a package.

If When only the actuator is purchased seperately, confirm that the combination of the controller, which you have and the actuator is compatible.

/ See 5.3 Caution (1) on p. 32

<Be sure to check the following before use.>

- (1) Check that actuator label for model number.
This matches the controller.
- (2) Check Parallel I/O configuration matches (NPN or PNP).



3.2 Setting Function

Refer to the operation manual of the cotroller (LEC series) for details of the setting function.

Easy Mode for simple setting

>Select “Easy mode” for instant operation

Controller setting software

- Setting and operation, such as the step data setting, test drive and JOG / fixed-distance moving, can be performed on the same page.

The screenshot shows the 'Easy Mode' window with various controls and a step data table. Red dashed boxes and arrows highlight specific features:

- JOG moving:** Indicated by an arrow pointing to the 'Jog Speed' section.
- Start testing:** Indicated by an arrow pointing to the 'Drive' button.
- Positioning data setting:** Indicated by an arrow pointing to the 'Step Data' table.
- Speed setting of JOG / fixed distance:** Indicated by an arrow pointing to the 'Move Speed' input field.
- Fixed distance moving:** Indicated by an arrow pointing to the 'Move distance' input field.

No.	Move M	Speed mm/s	Position mm	Pushing F %	TriggLV %	In pos mm
0	Absolute	50	24.00	0	0	0.50
1	Absolute	50	12.00	40	40	24.00
2						
3						
4						
5						
6						
7						
8						
9						

Teaching box

- Setting and operation by the simple screen without scrolling.
- Select function by the iconized menu at the first page.
- Step data setting and monitoring at the second page.

1st screen icons: データ DATA, モニタ MONITOR, テスト TEST, アラーム ALARM, ジョグ JOG, 設定 SETTING.

2nd screen data for Axis 1:

Data	Axis 1
Step No.	0
Posn	123.45mm
Force	30%

It can be registered by “SET” after entering the values.

Example of setting the step data

1st screen icons: データ DATA, モニタ MONITOR, テスト TEST, アラーム ALARM, ジョグ JOG, 設定 SETTING.

2nd screen data for Axis 1:

Monitor	Axis 1
Step No.	1
Posn	12.34mm
Force	50%

Operation status can be checked

Example of checking the operation status

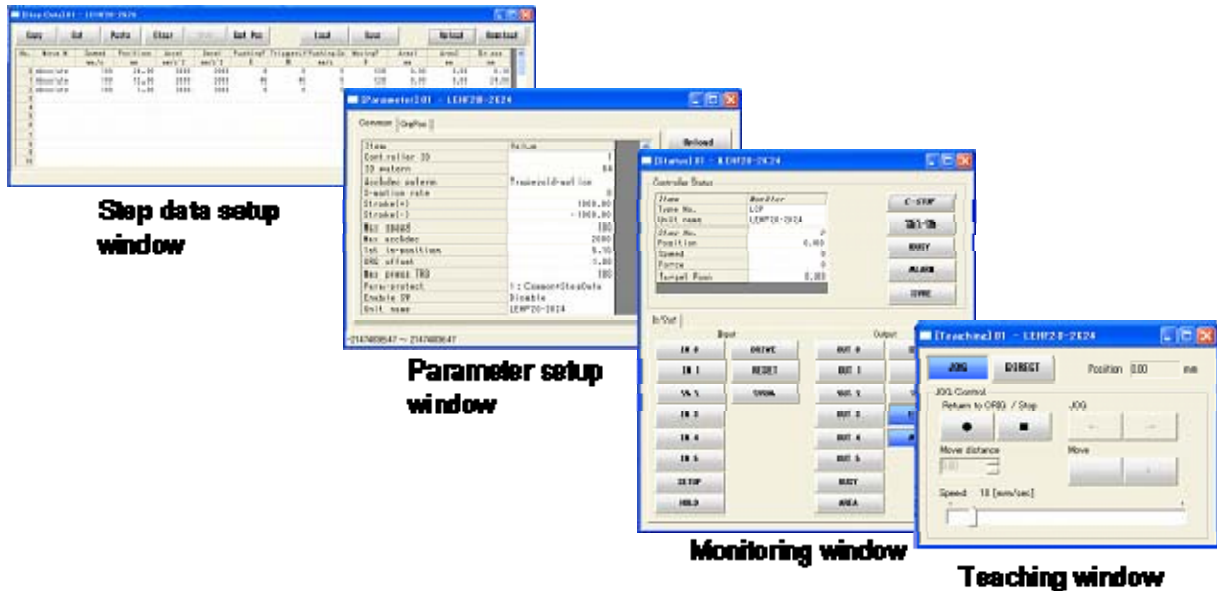
Normal mode for the detailed setting

>Select “Normal mode” if the detailed setting are necessary.

- Step data can be set in detail.
- Parameters can be set.
- Signals and terminal condition can be monitored.
- JOG and fixed distance movement, return to origin position, test operation and testing of compulsory output can be done.

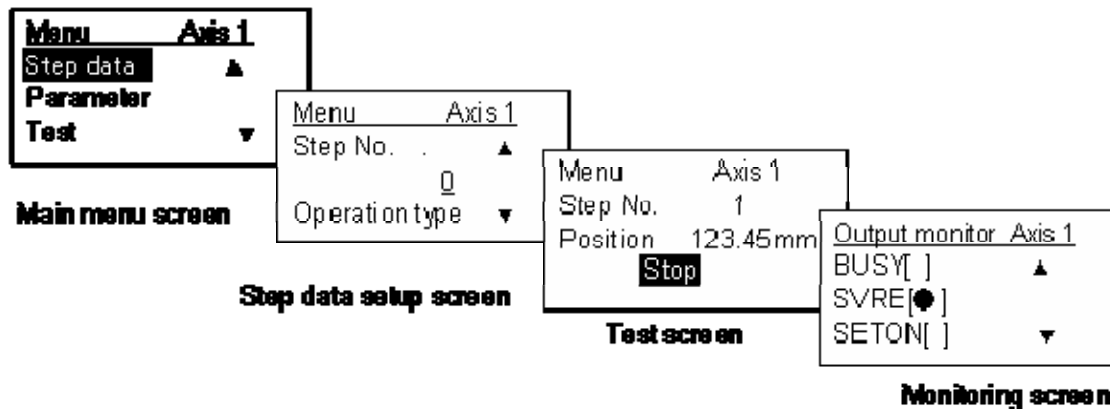
Controller setting software

- Every function, step data, parameter, monitor and teaching are indicated in a different window.



Teaching box

- The data in the controller can be saved / forwarded in this teaching box.
- Continuous test operation can be made after specifying five step data.



Controlled items

PC: Controller setting software

TB: Teaching box

O: Available function

X: Not available function

Function		Content	Easy mode		Normal mode
			PC	TB	PC/TB
Step data (Except)	Movement method	Can be selected of absolute / relative position move	○	×	○
	Speed	Can be set in units of 1°/s.	○	○	○
	Position	Can be set in units of 0.01°.	○	○	○
	Acceleration Deceleration	Can be set in units of 1°/s ² .	○	○	○
	Pushing force	Can be set in units of 1%. / In case of positioning operation: Set to 0%.	○	○	○
	Trigger LV	Trigger LV of target pushing force when pushing operation. Can be set in units of 1%.	○	×	○
	Pushing speed	Can be set in units of 1°/s.	○	×	○
	Moving force	100%	○	×	○
	Area output	Can be set in units of 0.01°.	○	×	○
	In position	During positioning operation: Width to the target position. It should be set to 0.5° or more. During pushing operation: How much it moves during pushing.	○	×	○
Parameter (Except)	Stroke(+)	+ side limit of position. (Can be set in units of 0.01°)	×	×	○
	Stroke(-)	- side limit of position. (Can be set in units of 0.01°).	×	×	○
	ORIG speed	Speed when returning to home position can be set.	×	×	○
	ORIG ACC	Acceleration when returning to origin can be set.	×	×	○
Test	JOG	It can make continuous operation at the set speed while the switch is being pressed	○	○	○
	MOVE	It can make test operation at the set distance and speed from the current position when the switch is pressed.	○	×	○
	Return to ORIG	Test of return to origin can be done.	○	○	○
	Test drive	The operation of the specified step data can be tested.	○	○	○ (Continuous operation)
	Force output	ON/OFF of the output terminal can be tested.	×	×	○
Monitor	DRV mon	Current position, current speed, current force and the specified step data No. can be monitored.	○	○	○
	In/Out mon	Current ON/OFF status of the input and output terminal can be monitored.	×	×	○
ALM	Status	The alarm currently being generated can be confirmed, and be reset.	○	○	○
	ALM Log record	The alarm generated in the past can be confirmed.	×	×	○
File	Save - Load	The step data and parameter of the objective controller can be saved, forwarded and deleted.	×	×	○
Other	Language	Language can be changed to Japanese / English.	○ *3	○ *2	○ *2 *3

*1 Every parameter is set to the recommended condition before shipment from the factory. Only change the setting of the items which require adjustment.

*2 Teaching box: In the Normal mode the teaching box can be set to work in English or Japanese.

*3 Controller setting software: Can be installed by selecting English version or Japanese version.


3.3 Step data setting method

Refer to the operation manual of the controller (LEC series) for details.

This operation manual specifies the electric rotary actuator, if an actuator other than the electric rotary actuator is used, refer to the operation manual of each type of actuator and controller (LEC series) regarding the description of step data.

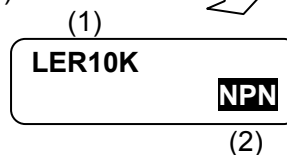
Caution

The actuator body and controller are sold as a package.

If When only the actuator is purchased separately, confirm that the combination of the controller, which you have and the actuator is compatible. / See 5.3  Caution (1) on p. 32

<Be sure to check the following before use.>

- (1) Check that actuator label for model number.
This matches the controller.
- (2) Check Parallel I/O configuration matches (NPN or PNP).



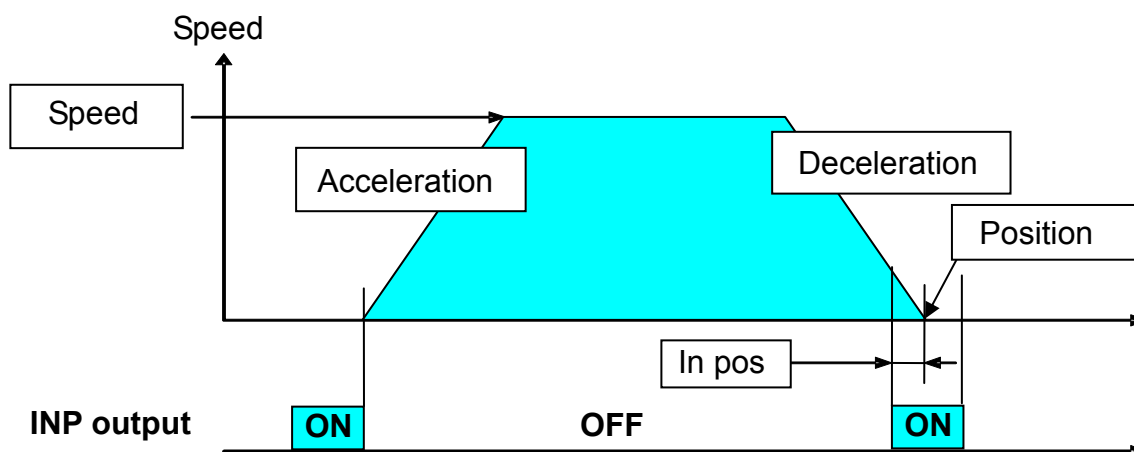
Positioning operation

In the positioning operation, the electric rotary actuator moves to and stops at the target position. The following image shows the setting items and operation.

<Confirmation of reaching the target position range during positioning operation>

When the fingers of the rotary actuator are within the range of the target position, the target position reached signal INP (in position) is outputted.

When the table of the rotary actuator enters the range of 【in position】, the INP output signal turns on.





Caution

When the table is to be stopped by an external object, utilize the “pushing operation”.

If the product is used in the positioning operation, there may be galling or other problems when it comes into contact with the external object.

Note) When it is not possible to operate the table, move it with manual override screws.

/ See 6.2  Caution (5) on p. 36
and 6.3  Caution (4) on p. 36

<Items and set values in positioning operation>

Step No. 0: Positioning operation

Top of the page												
	a	b	c	d	e	f	g	h	i	j		k
No.	Move M	Speed °/s	Position °	Accel °/s^2	Decel °/s^2	PushingF %	TriggerLV %	PushingSp °/s	MovingF %	Area1 °	Area2 °	In_pos °
0	ABS	200	0.00	3000	3000	0	0	0	100	20.00	40.00	0.50
1	ABS	200	180.00	3000	3000	50	50	30	100	179.00	181.00	5.00

【◎】 Need to be set ・ 【○】Need to be adjusted as required

【X】 Not used. Items don't need to be changed in positioning operation.

a <◎ Movement MOD> When the absolute position is required, set Absolute
When the relative position is required, set Relative
⇒ Absolute: Distance from the origin position. / General setting method
Relative: Feed from the current position. / This is used when simplified data.

b <◎ Speed> Transfer speed to the target position.

c <◎ Position> Target position.

d <○ Acceleration> The parameter which defines how rapidly the actuator reaches the speed set in **b**.
The higher the set value, the faster it reaches the speed set in **b**.

e <○ Deceleration> The parameter which defines how rapidly the actuator comes to stop.
The higher the set value, the quicker it stops.

f <◎ Pushing force> Set **0.** (If values other than 0 set, the operation will be changed to the pushing operation.)

g <X Trigger LV> **h** <X Pushing speed>

i <○ Moving force> Max. force at the positioning operation.
The force is automatically adjusted corresponding to the load.
/See 6.3⚠Caution (2) on p. 36

j <○ Area1, Area2> This is the condition that turns on the AREA output signal.
The setting condition should be **Area 1<Area 2**.
It is possible to set at Relative operation too.
The position will be Absolute (position from the origin).

Example) In case of Step no.0

【AREA】 output signal is outputted between Area 1:20 and Area 2:40.

k <○ In position> This is the condition that turns on the INP (in position) output signal.
⇒ When the electric rotary actuator reaches the range of the target position, the INP output signal is output.
When it is necessary to output the target position reaching signal earlier, make the value larger.

Note) Default: Set the value more than 【0.50】.

Example) In case of Step no.0

Position: 0 ± In position: 0.5 = 【INP】 is outputted from the value of ±0.5.

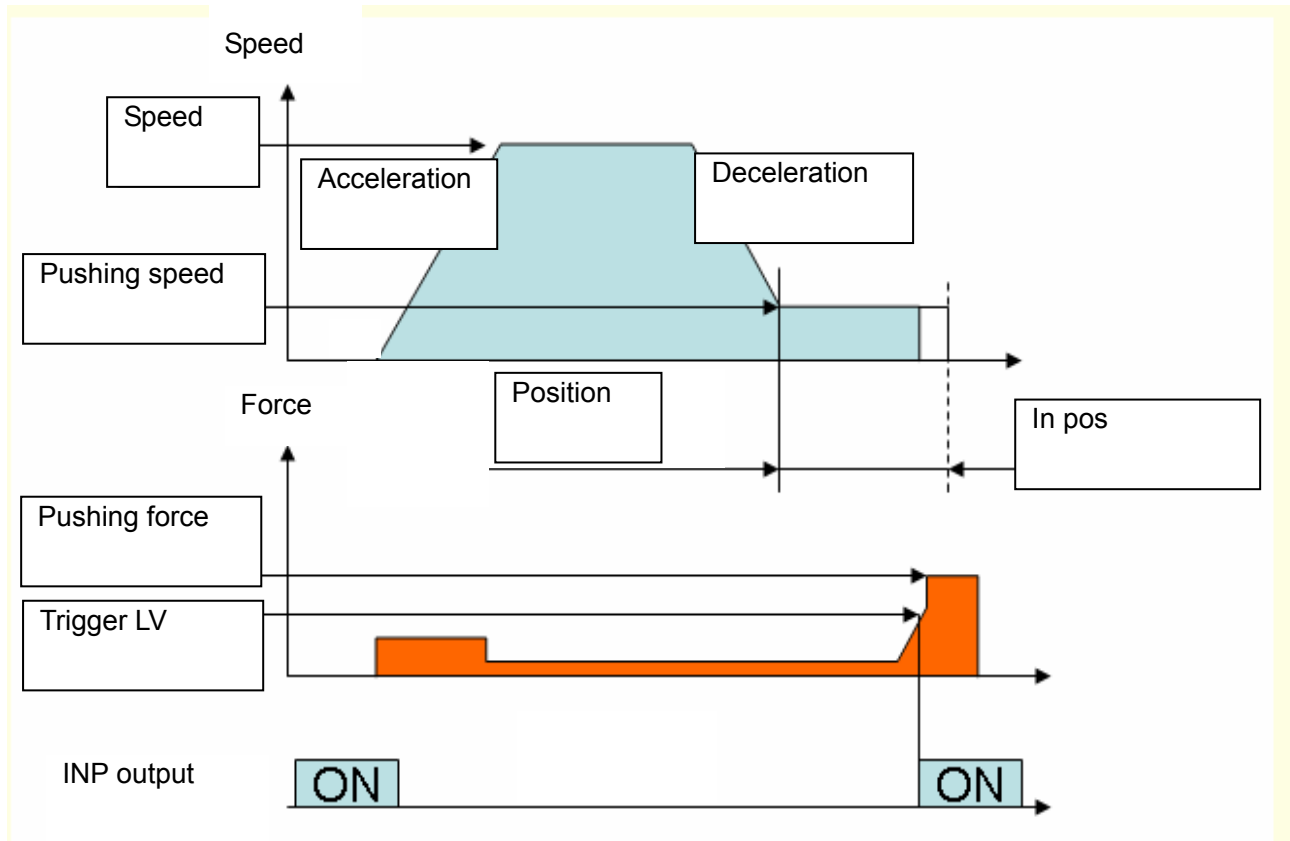
Pushing operation

The fingers move to the target position and hold a work piece with the set pushing force.
The figure shows setting items and operation. The setting items and values are described below.

< Confirmation of reaching the target value during the pushing operation >

The target position reached signal INP (in position) is generated when the target pushing force (Trigger LV) is achieved.

Also, if the actual pushing force exceeds the Trigger LV, the INP signal is turned on.





Caution

When the table is to be stopped by an external object, utilize the “pushing operation”.

If the product is used in the positioning operation, there may be galling or other problems when it comes into contact with the external object.

Note) When it is not possible to operate the table, move it with manual override screws.

/ See 6.2  Caution (5) on p. 36
and 6.3  Caution (4) on p. 36

<Items and setting values of pushing operation>

Step no. 1: Pushing operation

	a	b	c	d	e	f	g	h	i	j		k
No.	Move M	Speed	Position	Accel	Decel	PushingF	TriggerLV	PushingSp	MovingF	Area1	Area2	In_pos
		°/s	°	° /s^2	° /s^2	%	%	° /s	%	°	°	°
0	ABS	200	0.00	3000	3000	0	0	0	100	20.00	40.00	0.50
1	ABS	200	180.00	3000	3000	50	50	30	100	179.00	181.00	5.00

【◎】 Need to be set ・ 【○】 Need to be adjusted as required

a <◎ Movement MOD> When the absolute position is required, set Absolute
When the relative position is required, set Relative
⇒ Absolute : Distance from the origin position.
Relative : Feed from the current position

b <◎ Speed> Transferring speed to the target position.

c <◎ Position> Target position.

Note) When the table is to be stopped by an external object, set the product to a position of at least 1 degrees away from the work piece. (This position is referred to as the pushing start position). / See 6.3 ⚠ Caution (5) on p. 36

d <○ Acceleration> The parameter which defines how rapidly the actuator reaches the speed set in **b**
The higher the set value, the faster it reaches the speed set in **b**.

e <○ Deceleration> The parameter which defines how rapidly the actuator comes to stop.
The higher the set value, the quicker it stops.

f <◎ Pushing force> Pushing force ratio is defined. Note) 40% to 50%

g <◎ Trigger LV> The condition at which INP output signal is turned on.
Set it at the value equivalent to **the pushing force**
/ See 6.3 ⚠ Caution (3) on p. 36
⇒ The INP output signal is given when the target force (Trigger LV) is achieved.
The INP output signal is turned on when the generated force exceeds the value.

h <◎ Pushing speed> The pushing speed
⇒ Set the speed in the following range. If the speed is too high, the actuator or workpiece can be damaged by the impact.
Note) LER*K series: 20 °/sec , LER*J series: 30 °/sec

i <○ Moving force> The upper force limit for the pushing operation starting position.
The force is automatically adjusted corresponding to the load.
/ See 6.3 ⚠ Caution (2) on p. 36

j <○ Area1, Area2> This is the condition that turns on the AREA output signal.
The setting condition should be **Area 1<Area 2**.
It is possible to set at Relative operation.
The position will be Absolute (position from the origin).

k <◎ In position> The transfer distance (relative value) when pressing
If the transferred distance exceeds the setting, it stops even if it is not pressing.
If the transfer distance is exceeded, the INP output signal will not be turned on.
(incomplete holding)

Example) In case of Step no.1

Position: 180 – positioning width: 5 = 185

(The position where the incomplete pressing is detected.)

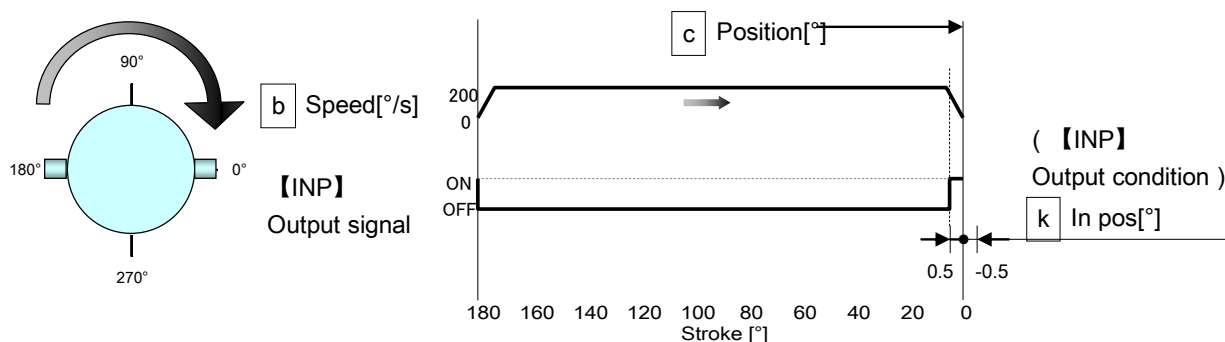
Example of step data entry (1)

< Positioning operation - 【INP】output signal, 【AREA】output signal >

	a	b	c	d	e	f	g	h	i	j		k
No.	Move M	Speed	Position	Accel	Decel	PushingF	TriggerLV	PushingSp	MovingF	Area1	Area2	In pos
		° /s	°	° /s^2	° /s^2	%	%	° /s	%	°	°	°
0	ABS	200	0.00	3000	3000	0	0	0	100	20.00	40.00	0.50

•Step data no.0 : Positioning operation (It moves from Position:180[°] to Position:0[°])

Condition 1) The 【AREA】output signal is not used.

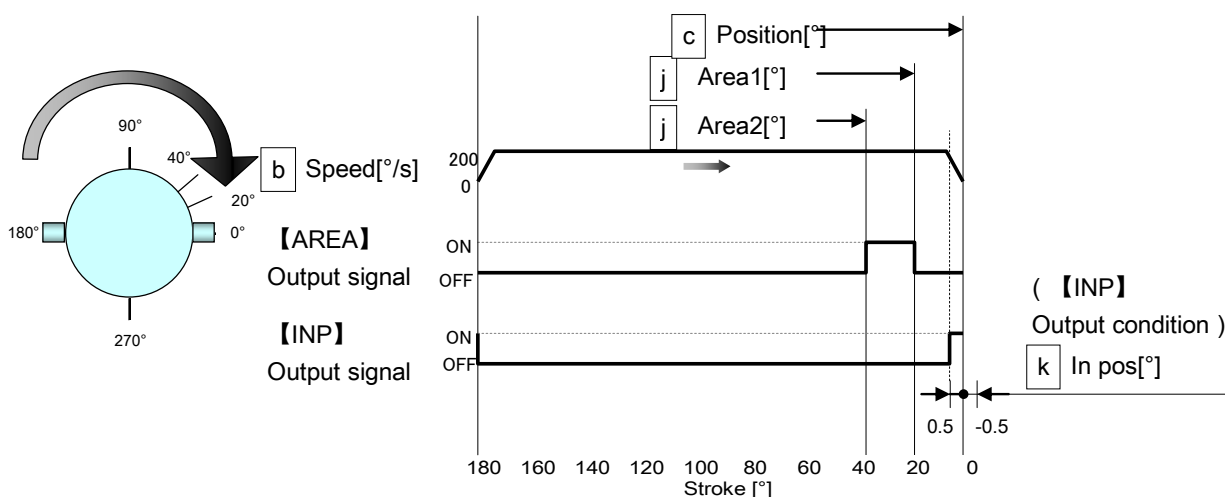


The 【INP】output signal is turned on from
0[°] + 0.5[°] = 0.5[°]

Condition 2) The 【AREA】output signal is used.

*The 【AREA】output signal is a signal output when the rod traverses through a certain range (The step data: **Area 2** from **Area 1**).

This feature is useful when an output to check the rod position at intermediate stroke is required.



- The 【 AREA 】 output signal is turned on from **Area 1**:20[°] between **Area 2**:40[°].
- The 【 INP 】 output signal is turned on from
0[°] + 0.5[°] = 0.5[°]

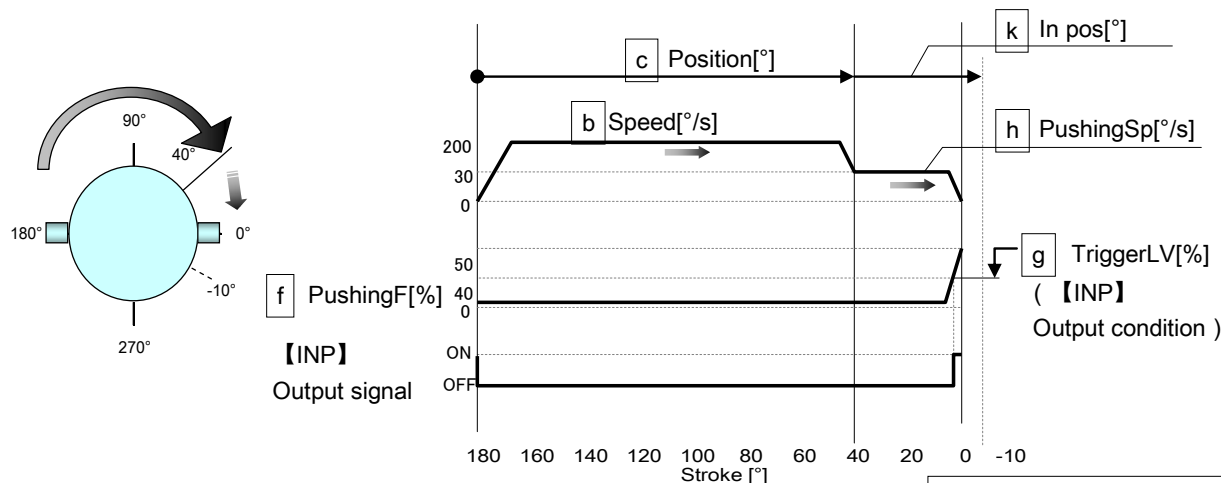
Example of step data entry (2)

< Pushing operation - 【INP】output signal, 【AREA】output signal >

	a	b	c	d	e	f	g	h	i	j		k
No.	Move M	Speed	Position	Accel	Decel	PushingF	TriggerLV	PushingSp	MovingF	Area1	Area2	In pos
		° /s	°	° /s^2	° /s^2	%	%	° /s	%	°	°	°
0	ABS	200	40.00	3000	3000	50	40	30	100	0.00	60.00	50.00

• Step data no.0 : Positioning operation. (It moves to End limit after it moves from 180° to 40°.)

Condition 1) The 【AREA】output signal is not used.



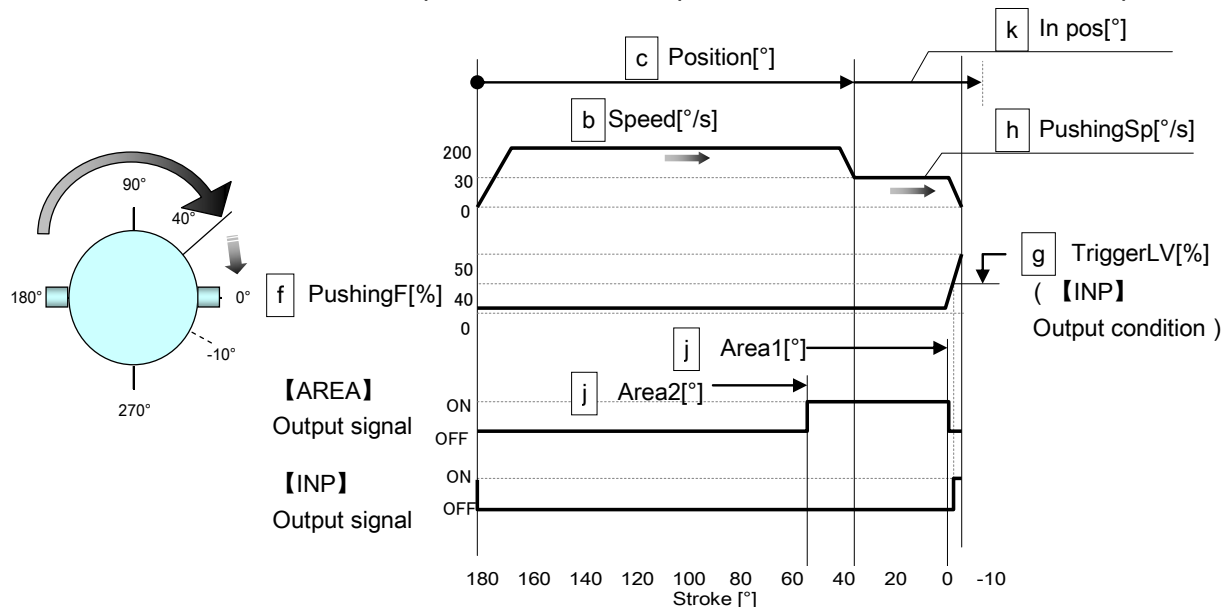
• The 【INP】 output signal is turned on when trigger LV : 40[%] is exceeded.

/See 6.3△caution(3) on p.36

Condition 2) The 【AREA】output signal is used.

* The 【AREA】output signal is a signal output when the rod traverses through a certain range (The step data: **Area 2** from **Area 1**).

This feature is useful when an output to check the rod position at intermediate stroke is required.



• The 【AREA】 output signal is turned on from **Area 1:0[°]** between **Area 2:60[°]**.

• The 【INP】 output signal is turned on when trigger LV : 40[%] is exceeded.

Example of step data entry (3)

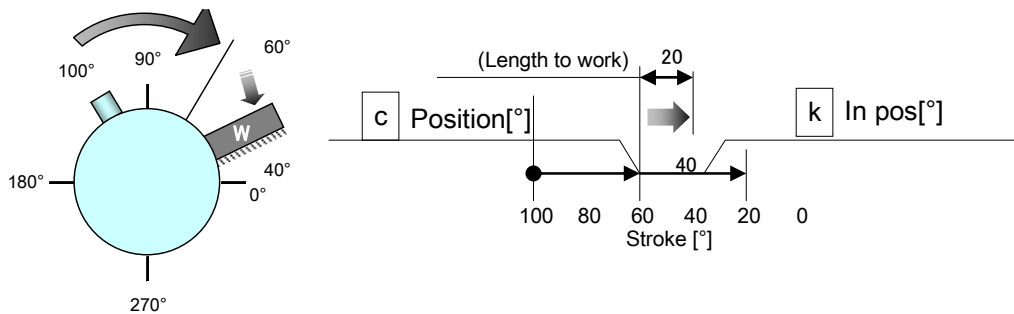
< Pushing operation - In position >

	a	b	c	d	e	f	g	h	i	j		k
No.	Move M	Speed	Position	Accel	Decel	PushingF	TriggerLV	PushingSp	MovingF	Area1	Area2	In pos
		°/s	°	°/s^2	°/s^2	%	%	°/s	%	°	°	°
0	ABS	200	60.00	3000	3000	50	40	30	100	20.00	60.00	40.00

•Step data no.0 : Pushing operation

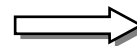
("Pushing operation" is done during 20° after it moves from 0° to 20°.)

Condition 1) Length to work < In position



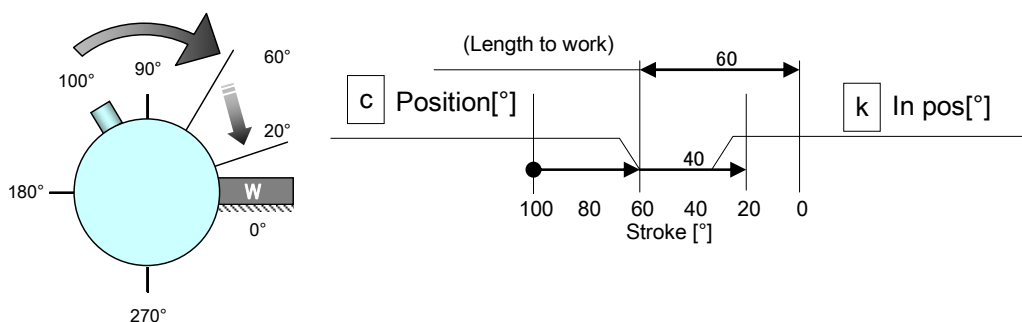
【INP】Output condition

- **k** In pos \geq Length to work
- Actual force \geq **g** TriggerLV



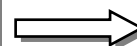
The 【INP】 output signal is turned on

Condition 2) Length to work > In position



【INP】Output condition

- **k** In pos < Length to work
- Actual force < **g** TriggerLV



The 【INP】 output signal is not turned on
The 【BUSY】 output signal is turned on

Example of step data entry (4)

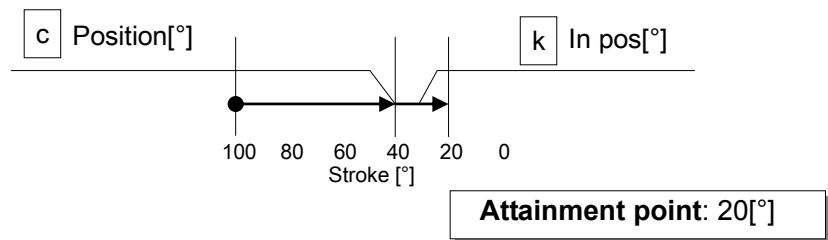
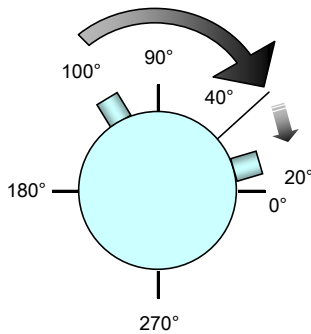
< Pushing operation – Driving starting position >

The pushing action is different and dependent upon the starting position and direction.

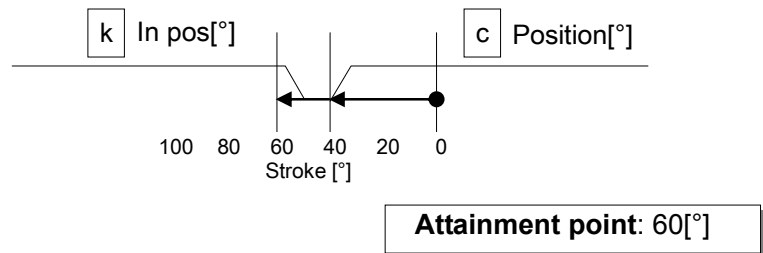
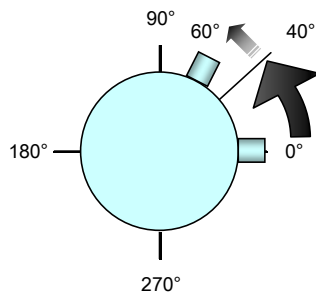
Confirm the position where the pushing operation starts.

	a	b	c	d	e	f	g	h	i	j		k
No.	Move M	Speed	Position	Accel	Decel	PushingF	TriggerLV	PushingSp	MovingF	Area1	Area2	In pos
		° /s	°	° /s^2	° /s^2	%	%	° /s	%	°	°	°
0	ABS	200	100.00	3000	3000	0	0	0	100	0.00	0.00	0.50
1	ABS	200	0.00	3000	3000	0	0	0	100	0.00	0.00	0.50
2	ABS	200	40.00	3000	3000	50	40	30	100	20.00	40.00	20.00

Condition 1) In case the pushing operation is **Step no.0** to **Step no.2**.



Condition 2) In case the pushing operation is **Step no.1** to **Step no.2**.



Caution

When the operation is discontinued by EMG-Stop or drive-stop

Drive-stop and the pushing operation is commanded just after restart, the moving direction depends on the operation-starting position.

Operating procedure and input / output signals for each operation.

The input / output signal and the operation description for operating this electric actuator are as follows.

1) Signals along with the operation procedures

In case the operation order is

1. Supply power to the motor → 2. Return to origin → 3. Step no. 1 → 4. Step no. 2 → 5. Cut power to the motor

Procedure	Input signal	Output signal to the input signal	Operation description
1	SVON (Servo on) [●]	SVRE (Servo ready) [●]	Power is supplied to the motor, and detection of the magnetic pole position starts. => Completion.
2	SETUP [●]	SETON [●] INP (IN position) [●]	Returning to the origin starts. => Completion.
3	IN0 [●] IN1 [] IN2 [] IN3 [] IN4 [] IN5 [] ↓ DRIVE [●] ⇒ [] Note 3) 5)	OUT0 [●] OUT1 [] OUT2 [] OUT3 [] OUT4 [] OUT5 [] } Note 3)4) ↓ After reaching of target position, INP [●] After stopping motion, BUSY []	Step no. 1 is selected, and the operation starts. ⇒ Complete.
4	IN0 [] IN1 [●] IN2 [] IN3 [] IN4 [] IN5 [] ↓ DRIVE [●] ⇒ [] Note 3) 5)	OUT0 [] OUT1 [●] OUT2 [] OUT3 [] OUT4 [] OUT5 [] } Note 3)4) ↓ After reaching of target position, INP [●] After stopping motion, BUSY []	Select the step no. 2, and the operation starts. ⇒ Complete.
5	SVON []	SVRE [] SETON [●] Note 2) INP [●]	Power to the motor is cut.

Note 1) [●] means ON, [] means OFF.

Note 2) The origin has been recognized when the operation is repeated, so it can operate without the procedure item 2.

Note 3) The "OUT*" signals are reset during the rising edge of the Drive signal. The "OUT*" signal which follows the "IN*" signal are outputted at the falling edge of the "drive" signal.

Note 4) When the alarm is generated, the alarm group is displayed.

Please confirm the controller (LEC series) manual for a detailed content of the alarm.

Note 5) Leave an interval of 30ms or more between input signals and maintain the state of the signal for 30ms or more, because PLC processing delays and controller scanning delays can occur.

2) Signals when stopped: In the event when “EMG” is used

/ See 8.3⚠ Caution (9) on p. 52

The operating sequence is 1. “Stop” → 2. Release the “Stop”

Procedure	Input signal	Output signal for the input signal	Operation description
1	EMG: Not energizing (TB / Stop switch: Locking)	* ESTOP[] SVRE [] SETON [●]	Power to the motor is cut by the “Stop” command regardless of whether it is operating or stopping.
2	EMG: Energizing (TB / Stop switch: Releasing)	* ESTOP[●] SVRE [●] SETON [●] Note 2)	The stop is released.

Note 1) [●] means ON, [] means OFF. * means negative logic

Note 2) SETON signal does not change after releasing the “STOP”.

Note 3) If the stop is input from the EMG or RESET terminal or the stop-switch on the connected Teaching Box during pushing operation, the actuator stop.
 (“Busy” signal turns OFF) And if the actuator stop within the range of “Position” ± “In pos” defined in step data, output signal “INP” turns ON.

3.4 Parameter setting method

Initial setting for the basic parameters

Refer to the controller's (LEC series) operation manual for detail.

As the "basic parameter" is unique data of each actuator, if an actuator other than the rotary actuator is used, refer to the operation manual of each actuator and the controller's (LEC series) operation manual for the basic parameter.

Description (Extract)	Initial input value	Input range
Controller ID	1	1 to 64 Note 1)
IO pattern	1: 64	-
Acceleration/ deceleration pattern	Trapezoidal acceleration/ deceleration	-
S-motion ratio	0	-
Stroke (+)	1000.00	-
Stroke (-)	-1000.00	-
Maximum speed	Max. speed of each product	Step data input limit: Max. speed of each product
Maximum acceleration/ deceleration	3,000	Step data input limit: 3,000 at the maximum
Default In positioning	0.50	-
Origin offset	0.00 / Basic 5.00/ External stopper(-2,3)	-
Maximum pushing force	50	Step data input limit: 40 to 50
Parameter protect	1: Basic + stepdata	Changeable parameter 1: Basic + step data, 2: Basic
Enable switch	Invalid	Select valid or invalid when using a teaching box
Model name	Part no. of each product	Only the English characters and numbers are changeable.
W-area output end 1	0.00	-
W-area output end 2	0.00	-
Origin correction data	0.00	-

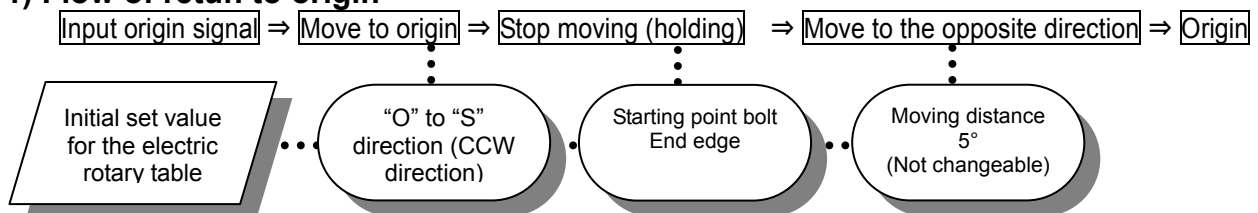
Note1) Become effective after restarting the controller.

<Return to origin>

Before the positioning and pushing operation, "return to origin" is necessary to establish the origin. The current position value of the electric rotary table increases if the "S" to "O" direction (move in the CW direction).

(The table moving direction to be increased cannot be changed.)

1) Flow of return to origin




Initial setting for the ORIG parameters

Refer to the controller's (LEC series) operation manual for detail.

As the "ORIG parameter" is unique data of each actuator, if an actuator other than the electric rotary actuator is used, refer to the operation manual of each actuator and the controller's (LEC series) operation manual for the "ORIG parameters".

Description (Extract)	Initial input value	Input range
ORIG direction	CCW	CW ("O" direction) CCW ("S" direction) Note 1)
ORIG mode	ORIG Press	-
ORIG limit	50	40 to 50 Note 2)
ORIG time	100	-
ORIG speed	20 / LER*K 30 / LER*J	-
ORIG ACC/DEC	3,000	-
Creep speed	20 / LER*K 30 / LER*J	-
ORIG sensor	Disable	-

Note1) Become effective after restarting the controller.

Note2) Return to origin cannot return while operating. / See 5.1  Caution (4) on p. 30

4. Wiring of cables / Common precautions

Warning

1. **Adjusting, mounting or wiring change should never be done before disconnecting the power supply to the product.**

Electrical shock, malfunction and damage can result.

2. **Do not disassemble the cables.**

Use only specified cables.

3. **Do not connect or disconnect the wires, cables and connectors when the power is turned on.**

Caution

1. **Wiring securely. Do not apply any voltage to the terminals other than those specified in the Operation Manual.**

2. **Wire the connector securely.**

3. **Take appropriate measures against noise.**

Noise in a signal line may cause malfunction. As a countermeasure separate the high voltage and low voltage cables, and shorten the wiring lengths, etc.

4. **Do not route input/output wires and cables together with power or high voltage cables.**

The product can malfunction due to interference of noise and surge voltage from power and high voltage cables to the signal line. Route the wires of the product separately from power or high voltage cables.

5. **Take care that actuator movement does not catch cables.**

6. **Operate with all wires and cables secured. Avoid bending cables at sharp angles where they enter the product.**

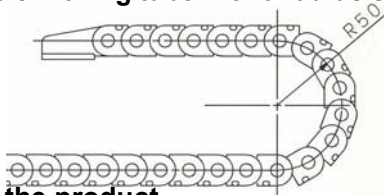
7. **Avoid twisting, folding, rotating or applying an external force to the cable.**

Risk of electric shock, wire breakage, contact failure and loss of control of the product can happen.

8. **Fix the motor cables protruding from the actuator in place before use.**

The motor and lock cables are not robotic type cables and can be damaged when moved. Therefore do not place it in a flexible moving tube.

9. **The actuator cables connecting the actuator and the controller are robotic type cables. But should not be placed in a flexible moving tube with a radius smaller than the specified value.(Min. 50 mm)**



10. **Confirm correct insulation of the product.**

Poor insulation of wires, cables, connectors, terminals etc. can cause interference with other circuits. Also there is the possibility that excessive voltage or current may be applied to the product causing damage.

11. **The speed / pushig force may vary, depending on the cable length, load and mounting conditions etc.**

If the cable length exceeds 5m, the speed/pushing force will be reduced 10% per 5m as the maximum. (if cable length is 15m: 20% reduction as the maximum.)

[Transportation]

Caution

1. **Do not carry or swing the product by the cables.**

5. Electric actuators / Common precautions

5.1 Design and selection

Warning

1. Be sure to read the operation manual (this manual and the one for the controller: LEC series).

Handling or usage/operation other than that specified in the Operation Manual may lead to breakage and operation failure of the product.

Any damage attributed to the use beyond the specifications is not guaranteed.

2. There is a possibility of dangerous sudden action by the product if sliding parts of machinery are twisted due to external forces etc.

In such cases, human injury may occur, such as by catching hands or feet in the machinery, or damage to the machinery itself may occur. Design the machinery should be designed to avoid such dangers.

3. A protective cover is recommended to minimize the risk of personal injury.

If a driven object and moving parts of the product are in close proximity, personal injury may occur. Design the system to avoid contact with the human body.

4. Securely tighten all stationary parts and connected parts so that they will not become loose.

When the product operates with high frequency or is installed where there is a lot of vibration, ensure that all parts remain secure.

5. Consider a possible loss of power source.

Take measures to prevent injury and equipment damage even in the case of a power source failure.

6. Consider behavior of emergency stop of whole system.

Design the system so that human injury and/or damage to machinery and equipment will not be caused, when it is stopped by a safety device for abnormal conditions such as a power outage or a manual emergency stop of whole system.

7. Consider the action when operation is restarted after an emergency stop or abnormal stop of whole system.

Design the system so that human injury or equipment damage will not occur upon restart of operation of whole system.

8. Disassembly and modification is prohibited

Do not modify or reconstruct (including additional machining) the product. An injury or failure can result.

9. Do not use the stop signal, "EMG" of the controller and stop switch on the teaching box as the emergency stop of system.

The stop signal, "EMG" of controller and the stop switch on the teaching box are for decelerating and stopping the actuator.

Design the system with an emergency stop circuit which is applied relevant safety standard separately.

10. When using it for vertical application, it is necessary to build in a safety device.

The table may fall due to the weight of work. The safety device should not interfere with normal operation of the machine.

Caution

1. Operate within the limits of the maximum usable stroke.

The product will be damaged if it is used with the stroke which is over the maximum stroke. Refer to the specifications of the product.

2. When the product repeatedly cycles with partial strokes, operate it at a full stroke at least once every 10 strokes.

Otherwise, lubrication can run out.

3. Do not use the product in applications where excessive external force or impact force is applied to it.

The product can be damaged.

4. Returning to origin cannot be done during the operation.

It cannot be done during positioning operation, pushing operation and pushing.

5.2 Mounting

Warning

1. Install and operate the product only after reading the Operation Manual carefully and understanding its contents. Keep the manual in a safe place for future reference.

2. Observe the tightening torque for screws.

Unless stated otherwise, tighten the screws to the recommended torque for mounting the product.

3. Do not make any alterations to this product.

Alterations made to this product may lead to a loss of durability and damage to the product, which can lead to human injury and damage to other equipment and machinery.

4. When an external guide is used, connect the moving parts of the product and the load in such a way that there is no interference at any point within the stroke.

Do not scratch or dent the sliding parts of the table or mounting face etc., by striking or holding them with other objects. The components are manufactured to precise tolerances, so that even a slight deformation may cause faulty operation or seizure.

5. Do not use the product until you verify that the equipment can be operated correctly.

After mounting or repair, connect the power supply to the product and perform appropriate functional inspections to check it is mounted correctly.

6. When attaching to the work piece, do not apply strong impact or large moment.

If an external force over the allowable moment is applied, it may cause looseness in the guide unit, an increase in sliding resistance or other problems.

7. Maintenance space

Allow sufficient space for maintenance and inspection.

5.3 Handling

Warning

1. Do not touch the motor while in operation.

The surface temperature of the motor can increase to approx. 90°C to 100°C due to operating conditions. Energizing alone may also cause this temperature increase. As it may cause burns, do not touch the motor when in operation.

2. If abnormal heating, smoking or fire, etc. occurs in the product, immediately turn off the power supply.

3. Immediately stop operation if abnormal operation noise or vibration occurs.

If abnormal operation noise or vibration occurs, the product may have been mounted incorrectly. Unless operation of the product is stopped for inspection, the product can be seriously damaged.

4. Never touch the rotating part of the motor or the moving part of the actuator while in operation.

5. **When installing, adjusting, inspecting or performing maintenance on the product, controller and related equipment, be sure to turn off the power supply to each of them. Then, lock it so that no one other than the person working can turn the power on, or implement measures such as a safety plug.**



Caution

1. **Keep the controller and product combined as delivered for use.**

The product is set in parameters for shipment. If it is combined with a different product parameter, failure can result.

2. **Check the product for the following points before operation.**

- a) Damage to power supply line and signal line.
- b) Looseness of the connector to each power line and signal line.
- c) Looseness of the actuator /cylinder and controller /driver mounting
- d) Abnormal operation
- e) Emergency stop of the total system

3. **When more than one person is performing work, decide on the procedures, signals, measures and resolution for abnormal conditions before beginning the work. Also, designate a person to supervise work other than those performing work.**

4. **Actual speed of the product will be changed by the workload.**

Before selecting a product, check the catalog for the instructions regarding selection and specifications.

5. **Do not apply a load, impact or resistance in addition to a transferred load during return to origin.**

In the case of the return to origin by pushing force, additional force will cause displacement of the origin position since it is based on detected motor torque.

6. **Do not remove the nameplate.**

7. **Operation test should be performed by low speed. Start operation by predefined speed after confirming there are no problems.**

[Ground]



Warning

1. **Please give the ground to the actuator.**
2. **The ground should be exclusive use. (Less than 100Ω)**
3. **The ground cable length should be as short as possible.**

[Unpackaging]



Caution

1. **Check the received product is as ordered.**

If the different product is installed from the one ordered, injury or damage could result.

5.4 Operating environment

Warning

1. Avoid use in the following environments.

- Locations where a large amount of dusts and cutting chips are airborne.
- Locations where the ambient temperature is outside the range (refer to specifications).
- Locations where the ambient humidity is outside the range (refer to specifications).
- Locations where corrosive gas, flammable gas, sea water, water and steam are present.
- Locations where strong magnetic or electric fields are generated.
- Locations where direct vibration or impact is applied to the product.
- Areas that are dusty, or are exposed to splashes of water and oil drops.
- Areas exposed to direct sunlight (ultraviolet ray).

2. Do not use in an environment where the product is directly exposed to liquid, such as cutting oils.

If cutting oils, coolant or oil mist contaminates the product, failure or increased sliding resistance can result.

3. Install a protective cover when the product is used in an environment directly exposed to foreign matters such as dust, cutting chips and spatter.

Play or increased sliding resistance can result.

4. Shade the sunlight in the place where the product is applied with direct sunshine.

5. Shield the product if there is a heat source nearby.

When there is a heat source surrounding the product, the radiated heat from the heat source can increase the temperature of the product beyond the operating temperature range. Protect it with a cover, etc.

6. Grease oil can be decreased due to external environment and operating conditions and it deteriorates lubrication performance to shorten the life of the product.

[Storage]

Warning

1. Do not store the product in a place in direct contact with rain or water drops or is exposed to harmful gas or liquid.

2. Store in an area that is shaded from direct sunlight and has a temperature and humidity within the specified range (-10°C to 60°C and 35 to 85% No condensation or freezing).

3. Do not apply vibration and impact to the product during storage.

5.5 Maintenance

Warning

1. Do not disassemble or repair the product.

Fire or electric shock can result.

2. Before modifying or checking the wiring, the voltage should be checked with a tester 5 minutes after the power supply is turned off.

Electrical shock can result.

Caution

1. Maintenance should be performed according to the procedure indicated in the Operating Manual.

Incorrect handling can cause an injury, damage or malfunction of equipment and machinery.

2. Removal of product

When equipment is serviced, first confirm that measures are in place to prevent dropping of work pieces and run-away of equipment, etc, and then cut the power supply to the system. When machinery is restarted, check that operation is normal with actuators in the proper positions.

[Lubrication]



Caution

- 1. The product has been lubricated for life at manufacturer, and does not require lubrication in service.**

Contact SMC if lubrication will be applied.

6. Electric Rotary Table /Specific Product Precautions

6.1 Design and selection

Warning

1. **If the operating conditions involve load fluctuations, ascending/descending movements, or changes in the frictional resistance, ensure that safety measures are in place to prevent injury to the operator or damage to the equipment**
Failure to provide such measures could accelerate the operating speed, which may be hazardous to humans, machinery, and other equipment.
2. **Power failure may result in a decrease in the pushing force; ensure that safety measures are in place to prevent injury to the operator or damage to the equipment.**
When the product is used for clamping, the clamping force could be decreased due to power failure, potentially creating a hazardous situation in which the work piece is released.

Caution

1. **If the operating speed is set to fast and the moment of inertia is too large, the product could be damaged.**
Set appropriate product operating conditions in accordance with the model selection procedure.
2. **If more precise repeatability of the rotation angle is required, use the product with an external stopper, with repeatability of $\pm 0.01^\circ$ (180° and 90° with adj. of $\pm 2^\circ$) or by directly stop the workpiece using an external object utilizing the pushing operation.**
When using angle adjustment, the initially set rotation angle may change.

6.2 Mounting

Caution

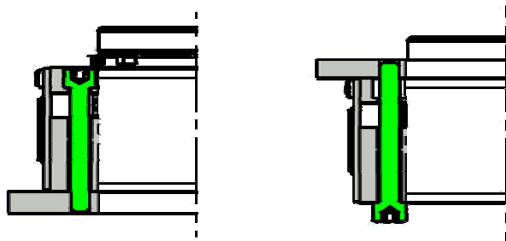
1. **Do not drop or hit the rotary actuator to avoid scratching and denting the mounting surfaces.**
Even slight deformation can cause the deterioration of accuracy and operation failure.
2. **When mounting the rotary actuator use screws with adequate length and tighten them with adequate torque within the specified torque range.**
Tightening the screws with a higher torque than recommended may cause malfunction, whilst the tightening with a lower torque can cause the displacement of the mounting position or in extreme conditions the actuator could become detached from its mounting position.

Mounting the workpiece to the rotary table

When mounting the workpiece to the rotary table use suitable fixing screws and tighten with adequate torque within the torque range specified below.

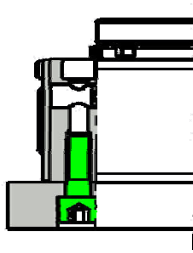
Part no.	Bolt	Max. tightening torque [Nm]
LER*10	M4×0.7	1.4
LER*30	M5×0.8	3.0
LER*50	M6×1	5.0

Rotary actuator mounting (thro holes)



Part no.	Bolt	Max. tightening torque [Nm]
LER*10	M5×0.8	3.0
LER*30	M6×1	5.0
LER*50	M8×1.25	12.0

Rotary actuator mounting (tapped holes)



Part no.	Bolt	Max. tightening torque [Nm]	Max. thread depth L[mm]
LER*10	M6×1	5.0	12
LER*30	M8×1.25	12.0	16
LER*50	M10×1.5	25.0	20

- The mounting face has holes and slots for positioning. If required use them for accurate positioning of the rotary actuator.
- If it is necessary to operate the product when it is not energized, use the manual override screws.

When the product is operated with the manual override screws, check the position of the manual override of the table, and leave necessary space. Do not apply excessive torque to the manual override screws that could lead to damage and malfunction of the product.

6.3 Handling



Caution

- If an external guide is mounted, connect it so that impact and load will not be applied to it.**
Use a freely moving connector (such as a coupling).
- The positioning force should be set to 100% of the the initial value.**
If the positioning force is set below the initial value, there may be variation in the cycle time, or an alarm may be generated.
- INP output signal**
 - 1) Positioning operation**
When the product comes within the set range by step data [In position], output signal will be turned on. Initial value: Set to [0.50] or higher.
 - 2) Pushing operation**
When the pushing force exceeds the [TriggerLV] value the INP (In position) output signal is turned on. Please set the [Pushing force] and the [TriggerLV] within the specified range.
 - To ensure that the actuator pushes the workpiece by the inputted [pushing force], it is recommended that the [TriggerLV] is set to the same value as the [pushing force].
 - When the [TriggerLV] and [pushing force] are set to be less than the lower limit of the specified range, there is the possibility that the INP output signal will be switched on from the pushing operation start position.
- When the load is to be stopped by the product with an external stopper or an external object directly, utilize the “pushing operation”. Do not stop the table with an external object by positioning operation and in the range of the positioning operation.**
If the product is used in the positioning operation, there may be galling or other problems when it comes into contact with the external object.
- When the table is stopped by pushing operation (stopping or clamping), set the product to a position of at least 1 ° away from a work piece (This position is referred to as a pushing start position).**
If the pushing operation (stopping or clamping) is set to the same position as the externally stopping position, the following alarms may be generated and operation may become unstable.
 - “Posn failed” alarm**
The product cannot reach a pushing start position due to the deviation of work pieces in width.
 - “Pushing ALM” alarm**
The product is pushed back from a pushing start position after starting to push.
 - “Err overflow” alarm**
The displacement at the pushing start position exceeds the specified range.
- If the table is stopped by an external object, there is no backlash effect in pushing operation.**
The return to origin position is set by pushing operation.

7. **In the external stopper specification, an angle adjustment screw (adjuster bolt) is mounted as the standard specification.**
The rotation angle adjustment range is $\pm 2^\circ$ from the angle rotation end.
If the adjustment range is exceeded, the rotation angle may change due to insufficient strength of the external stopper.
The angle adjustment of the adjuster bolt is 1° /rotation (reference).
8. **In case that gravity is added to the work-piece along the rotation direction when product is mounted vertically, the work-piece may fall down when "SVON" signal is OFF or EMG is not energizing.**

6.4 Maintenance



Warning

1. The high precision bearing is assembled by pressing into position. It is not possible to disassemble it.





7. Troubleshooting

Alarms below are abstract of representative examples.

For other alarms, see operation manual of controller.

No.	Phenomenon	Cause	Countermeasure
1	The display unit is distance (mm) due to the controller setting software.	When the controller setting software/version is below 1.1, the display unit is distance (mm), but the product recognizes it as an angle(°)	If it is necessary to change it to the angle display, please upgrade the controller setting software. To upgrade the software, please go to the operation manual page of SMC website. http://www.smcworld.com/
2	Fail to operate / Initial stage	1) The cable is not connected or has been disconnected.	Confirm that the cable is connected correctly. /See 4. Wiring of cable on p. 29
	When power is supplied, alarm for "Phase Det ALM /code: 1-193" is generated. ↓ <Procedure of restart> "Turn the power supply off." ↓ "Turn the power supply on"	2) The load/resistance being applied to the actuator constantly exceeds the actuators specification.	Keep the load/resistance within the specified range. /See 2.1 Specifications on p.9
		3) The combination of the controller and the rotary actuator is not correct.	The controller and rotary actuator combination at the time of shipment should not be changed. /See 5.3⚠Caution(1) on p.32
		4) Excessive external force is being applied, (including vibration) or impact load.	Operate within the specified range. /See 2.1 Specifications on p.9 Release the warm using the manual override. /See 6.2⚠Caution(5) on p.32
	Alarm for "Step data ALM1 /code:1-048" is generated ↓ <Procedure of restart> Input the "reset signal."	Setting condition for step data is not correct. < Correct set condition > (1)Area 1 < Area 2 (2) Trigger LV ≤ Pushing force (3) Pushing speed ≤ Speed (4) Pushing force ≥ Min. pushing force (40 %)	Review the content of step data. / Refer to the LEC controller operation manual.
	Alarm for "Servo off ALM /code: 1-098" is generated ↓ <Procedure of restart> Input the "reset signal."	Perform positioning, pushing operation, return to origin and jog operation during the "SVON":OFF.	Provide the operation instruction after confirming that the input signal [SVON] is ON and then the output signal [SVRE] is ON.
	Alarm for "Drive ALM /code: 1-099" is generated. ↓ <Procedure of restart> Input the "reset signal."	Perform positioning, pushing operation before the "retun to origin".	Provide the operation instruction after confirming that the input signal [SETUP] is ON and then the output signal [SETON] is ON.
	"ORIG direction" cannot be change.	After the "ORIG direction" is changed, the controller power supply has not been turned OFF.	Become effective after restarting the controller. /See "Initial setting for the ORIG parameters" on p.28

No.	Phenomenon	Cause	Countermeasure
3	Operation not completed / Operation continue Alarm for "Posn failed /code: 1-149" is generated. ↓ <Procedure of restart> Input the "reset signal." →"SVRE": Automatically ON	1) The lead screw had galling due to excessive external force (including vibration) or impact.	Operate within the specified range /See 2.1 Specifications on p.9 Release the warm using the manual override. /See 6.2⚠Caution (5) on p.32
		2) The Power supply does not have sufficient capacity.	Check the power consumption for each actuator and controller: If necessary replace the existing power supply with a power supply with sufficient capacity. /See 2.1 Specifications on p.9
		3) Load/resistance more than specified range is being applied to the actuator.	Use within specification range. /See 2.1 Specifications on p.9
		4) The pushing operation is performed at the "Positioning operation" position.	Check the step data. /See 6.3⚠Caution (5) on p.36
		5) For the pushing operation: The position and the target start pushing position are not set correctly.	Check the step data. /See 6.3⚠Caution (5) on p.36
		6) The cable is not connected or has been disconnected.	Confirm that the cable is connected correctly. /See 4. Wiring of cable on p.29
		7) It was not the intended origin position because the rotary actuator pinched the work-piece during the"return to origin".	Remove the work-piece and restart the return to the intended origin position.
		8) Wrong input [0] is input as the positioning force.	Check the step data. <Moving force> /See "Step data setting" on p.18,20
		9) The step data position has not been changed correctly after the return to origin direction is changed.	Check the step data. <Position> /See "Step data setting" on p.18,20
		10) Because the operation of the step data is set to [INC/relative], the table comes into contact with an external object and does not move due to continuous operation. (Rotathion end etc.)	Check the step data. <Position> /See "Step data setting" on p.18,20 Check if correct operation instruction is provided.

No.	Phenomenon	Cause	Countermeasure
3	Alarm for "Pushing ALM /code: 1-096" is generated. ↓ <Procedure of restart> Input the "reset signal." →"SVRE": Automatically ON	1) For the pushing operation, the position, target start-pushing position, is not set correctly.	Check the step data. /See 6.3  Caution (5) on p.36
		2) It was not intended origin position because rotary actuator pinched work-piece during returning return to origin.	Remove the work-piece and command again the returning to origin that is intended.
	Operation is not completed / Operation continue Alarm for "Over motor Vol /code: 1-145" is generated. ↓ <Procedure of restart> Input the "reset signal." →"SVRE": Automatically ON	1) If the power supply is an "inrush-current restraining type", the alarm may be generated due to voltage drop.	Replace the power supply with a non "inrush-current restraining type" power supply. / Refer to the LEC controller operation manual.
		2) The Power supply does not have sufficient capacity.	Check the power consumption for each actuator and controller: If necessary replace the existing power supply with a power supply with sufficient capacity. /See 2.1 Specifications on p.9
	Alarm for "Err overflow /code: 1-196" is generated. ↓ <Procedure of restart> "Turn the power supply off." ↓ "Turn the power supply on"	1) The lead screw had galling due to excessive external force (including vibration) or impact.	Operate within the specified range /See 2.1 Specifications on p.9 Release the worm using the manual override. /See 6.2  Caution (5) on p.32
		2) The Power supply does not have sufficient capacity.	Check the power consumption for each actuator and controller: If necessary replace the existing power supply with a power supply with sufficient capacity. /See 2.1 Specifications on p.9
		3) Load/resistance more than specified range is being applied to the actuator.	Use within specification range. /See 2.1 Specifications on p.9
		4) The pushing operation is performed at the "Positioning operation" position.	Check the step data. /See 6.3  Caution (5) on p.36
		5) For the pushing operation: The position and the target start pushing position are not set correctly.	Check the step data. /See 6.3  Caution (5) on p.36
		6) The cable is not connected or has been disconnected.	Confirm that the cable is connected correctly. /See 4. Wiring of cable on p.29
		7) It was not the intended origin position because the rotary actuator pinched the work-piece during the "return to origin".	Remove the work-piece and restart the return to the intended origin position.

No.	Phenomenon	Cause	Countermeasure
3	Alarm for "Err overflow /code: 1-196" is generated. ↓ <Procedure of restart> "Turn the power supply off." ↓ "Turn the power supply on"	8) Wrong input [0] is input as the positioning force.	Check the step data. <Moving force> /See "Step data setting" on p.18,20
		9) The step data position has not been changed correctly after the return to origin direction is changed.	Check the step data. <Position> /See "Step data setting" on p.18,20
		10) Because the operation of the step data is set to [INC/relative], the table comes into contact with an external object and does not move due to continuous operation. (Rotation end etc.)	Check the step data. <Position> /See "Step data setting" on p.18,20
			Check if correct operation instruction is provided.
	Operation not completed / During operation (Not always, but may happen occasionally) Alarm for "Step data ALM2 /code: 1-051" is generated. ↓ <Procedure of restart> Input the "reset" signal.	1) Command invalid (unregistered) step data.	Check if the step data is valid (registered).
		2) Different input signal to the expected step number is inputted to the controller, because of a too short an interval between the input signal of the "IN*" and the "Drive" or inputting the signals at the same time.	Add an interval of 30msec or more between the input signals. / See "Operating procedure input and output signals for each operation type" on P.25
		3) Different input signal to the expected step number is inputted to the controller, because the input signal time was too short.	Add an interval of 30msec or more between the input signals. / See "Operating procedure input and output signals for each operation type" on P.25
		4) Different input signal to the expected step number is inputted to the controller, caused by PLC or other device.	Check that the step number is inputted correctly for the required motion.
	- Operation completed by unexpected motion. - No alarm / During operation (Not always, but may happen occasionally)	1) Different input signal to the expected step number is inputted to the controller, because of a too short an interval between the input signal of the "IN*" and the "Drive" or inputting the signals at the same time.	Add an interval of 30msec or more between the input signals. / See "Operating procedure input and output signals for each operation type" on P.25 Note) Recommend to check the "OUT" output signal for more secure operation.
		2) Different input signal to the expected step number is inputted to the controller, because the input signal time was too short.	Add an interval of 30msec or more between the input signals. / See "Operating procedure input and output signals for each operation type" on P.25 Note) Recommend to check the "OUT" output signal for more secure operation.
		3) Different input signal to the expected step number is inputted to the controller, caused by PLC or other device.	Check that the step number is inputted correctly for the required motion. / See "Operating procedure input and output signals for each operation type" on P.25 Note) Recommend to check the "OUT" output signal for more secure operation.

No.	Phenomenon	Cause	Countermeasure
4	"INP" output signal is unstable. Positioning completion signal [INP] is not outputted.	1) The value of [In position] in step data is too small.	Check the step data. <In Pos> (Minimum value:0.5) /See "Step data setting" on p.18
	"INP" output signal is [OFF]. "INP" output signal is [OFF] even after the pushing operation is completed.	1)The value of "In pos" is input forward of work.	Input the value of "In pos" larger than length to work. /See "Example of step data entry (3)" on p.23
5	Positioning repeatability is out of specified range.	1) It shifts to the next operation by receiving the "INP" output signal.	Go to the next operation after receiving the "BUSY" output signal is outputted.
6	The operation time is delayed to the step data setting.	1) The inertia moment-angle acceleration and deceleration and effective torque - angular speed exceed the specified range.	Check this with the model selection stated in the catalog.
7	Damage	1) Abnormal external force	Interference of mechanism, eccentric load or excess load leads to cause deformation or damage of the actuator. Eliminate these factors.
8	The rod of the actuator with vertical mounting vibrates repeated up and down.	1) The inertia moment-angle acceleration and deceleration and effective torque - angular speed exceed the specified range.	Check this with the model selection stated in the catalog.

Revision history

SMC Corporation

4-14-1, Sotokanda, Chiyoda-ku, Tokyo 101-0021 JAPAN

Tel: + 81 3 5207 8249 Fax: +81 3 5298 5362

URL <http://www.smcworld.com>

Note: Specifications are subject to change without prior notice and any obligation on the part of the manufacturer.
© 2010 SMC Corporation All Rights Reserved