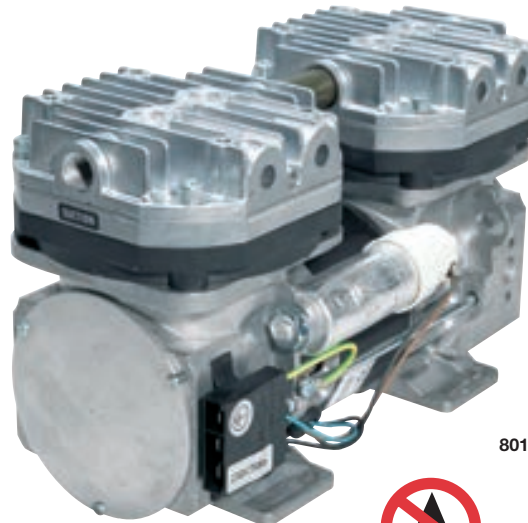




# Diaphragm Pumps

## MODELS

8011V  
8011ZVP  
8011ZVR



8011



## PRODUCT FEATURES

- Oil-less
- Maintenance free
- Aluminium seawater resistant
- Silent (50 – 54 dBA)
- Low vibrations
- High performance

## TYPICAL APPLICATIONS

- Autoclaves
- Analysers
- Vacuum ovens
- Rotation Evaporator
- Degassing
- Aspirators

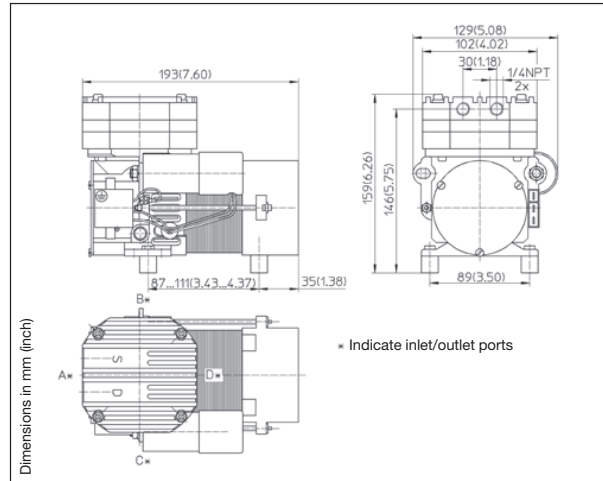
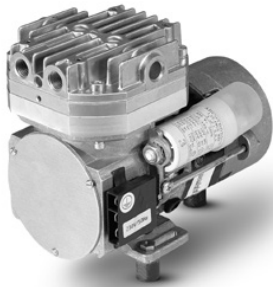


**THOMAS**  
by Gardner Denver



# Diaphragm Pump 8011V AC

<b>Flow</b>	<b>40,8 l/min</b>
<b>Max. vacuum</b>	<b>95%</b>



## Pneumatic Data

Description	8011V-35 AEE	8011V-35 AEE
Part number	115 V/60 Hz 230 V/50 Hz	80110501 80110500
Max. flow	40,8 l/min	34,0 l/min
Max. vacuum	95 %	95 %
Max. continuous vacuum	95 %	95 %
Max. restart vacuum	Ambient pressure	Ambient pressure

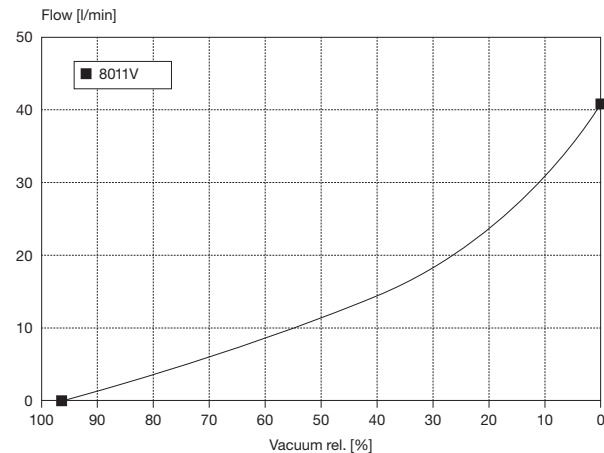
## Electrical Data

Motor type	Capacitor	Capacitor
Nominal voltage	115 V/60 Hz	230 V/50 Hz
Nominal speed	1600 rpm	1500 rpm
Current consumption	1 A	0,4 to 0,5 A
Starting current	2,3 A	1,0 to 1,15 A
Power consumption	115 W	85 to 115 W
Protection class	IP00	IP00
Motor insulation class	F	F
Thermal switch	140 °C	140 °C

## General Data

Ambient temperature	15 to 40 °C	15 to 40 °C
Media temperature	10 to 60 °C	10 to 60 °C
Weight	3,5 kg	3,5 kg
Port direction	BC	BC

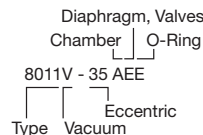
## Flow Curves



Choice of materials	Standard	Option
Chamber + Head	Aluminium	Aluminium hard coated

Diaphragm	EPDM	-
Valves	EPDM	FKM vapour resistant
O-Ring	EPDM	-

Model key:



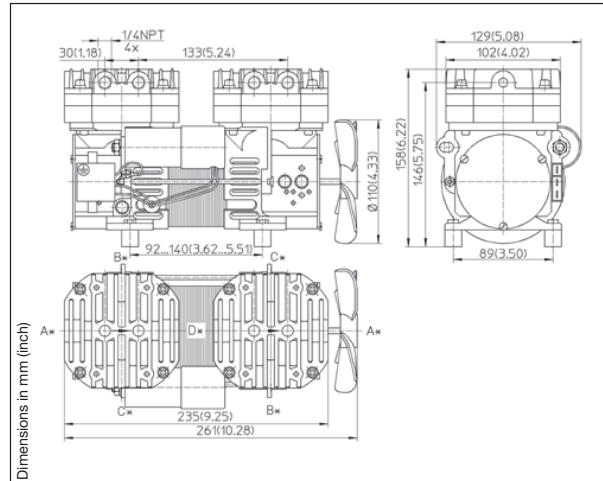
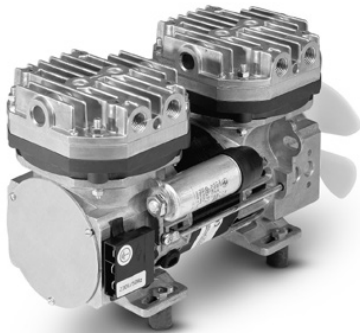
8011... Stock programme

The information presented in this material is based on technical data and test results of nominal units. It is believed to be accurate and reliable and is offered as an aid to help in the selection of Thomas products. It is the responsibility of the user to determine the suitability of the product for the intended use and the user assumes all risk and liability whatsoever in connection therewith. Thomas does not warrant, guarantee or assume any obligation or liability in connection with this information.

**THOMAS**  
by Gardner Denver

# Diaphragm Pump 8011ZVP AC

<b>Flow</b>	<b>72,0 l/min</b>
<b>Max. vacuum</b>	<b>93%</b>



## Pneumatic Data

Description	8011ZVP-35 AEE	8011ZVP-35 AEE
Part number	115 V/60 Hz 230 V/50 Hz	80110121 <b>80110110</b>
Max. flow	72,0 l/min	65,0 l/min
Max. vacuum	93%	93%
Max. continuous vacuum	93%	93%
Max. restart vacuum	Ambient pressure	Ambient pressure

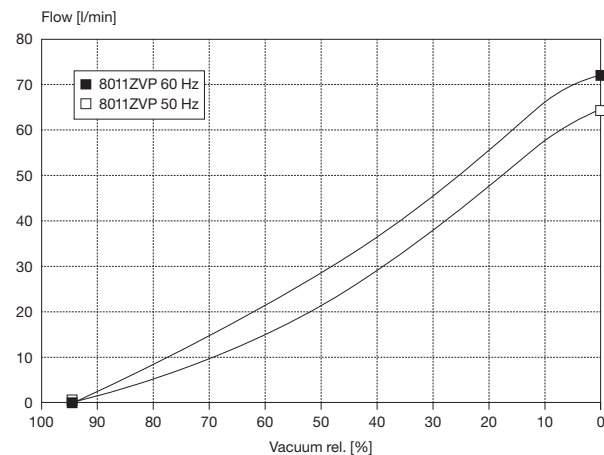
## Electrical Data

Motor type	Capacitor	Capacitor
Nominal voltage	115 V/60 Hz	230 V/50 Hz
Nominal speed	1500 rpm	1270 rpm
Current consumption	1,5 A	0,6 A
Starting current	3,3 A	1,4 A
Power consumption	90 W	95 W
Protection class	IP00	IP00
Motor insulation class	F	F
Thermal switch	140 °C	140 °C

## General Data

Ambient temperature	15 to 40 °C	15 to 40 °C
Media temperature	10 to 60 °C	10 to 60 °C
Weight	5,0 kg	5,0 kg
Port direction	BC	BC
Configuration	Parallel	Parallel

## Flow Curves



Choice of materials	Standard	Option
Chamber + Head	Aluminium	Aluminium hard coated

Diaphragm	EPDM	-
Valves	EPDM	FKM vapour resistant
O-Ring	EPDM	-

Model key: **8011...** Stock programme

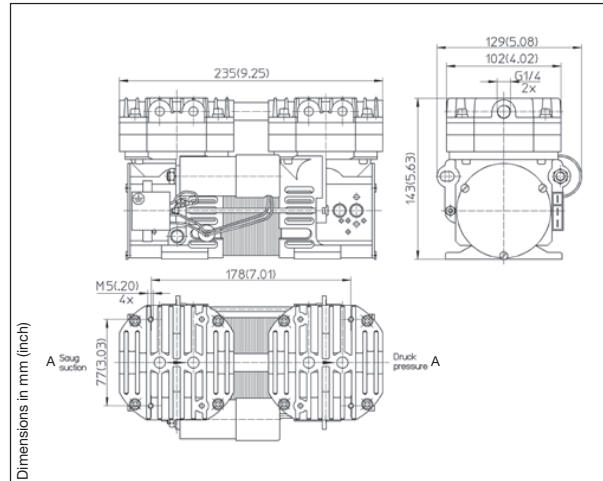
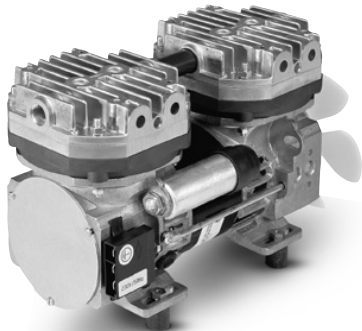
Diaphragm, Valves  
Chamber } O-Ring  
8011ZVP - 35 AEE  
Type | | Eccentric  
| | Parallel  
| | Vacuum  
| | Double head

The information presented in this material is based on technical data and test results of nominal units. It is believed to be accurate and reliable and is offered as an aid to help in the selection of Thomas products. It is the responsibility of the user to determine the suitability of the product for the intended use and the user assumes all risk and liability whatsoever in connection therewith. Thomas does not warrant, guarantee or assume any obligation or liability in connection with this information.

**THOMAS**  
by Gardner Denver

# Diaphragm Pump 8011ZVR AC

<b>Flow</b>	<b>34,0 l/min</b>
<b>Max. vacuum</b>	<b>99%</b>



## Pneumatic Data

Description	8011ZVR-35 AEE
Part number	230 V/50 Hz 80110106
Max. flow	34,0 l/min
Max. vacuum	99%
Max. continuous vacuum	99%
Max. restart vacuum	Ambient pressure

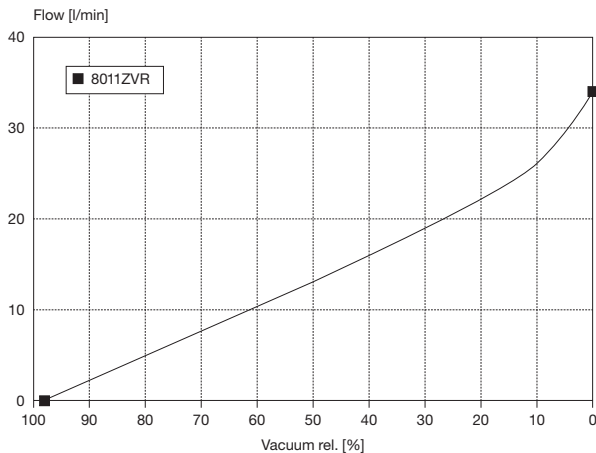
## Electrical Data

Motor type	Capacitor
Nominal voltage	230 V/50 Hz
Nominal speed	1300 rpm
Current consumption	0,6 A
Starting current	1,4 A
Power consumption	95 W
Protection class	IP00
Motor insulation class	F
Thermal switch	140 °C

## General Data

Ambient temperature	15 to 40 °C
Media temperature	10 to 60 °C
Weight	5,0 kg
Port direction	AA
Configuration	Series

## Flow Curves



Choice of materials	Standard	Option
Chamber + Head	Aluminium	Aluminium hard coated

Diaphragm	EPDM	-
Valves	EPDM	FKM vapour resistant
O-Ring	EPDM	-

Model key: 8011... Stock programme

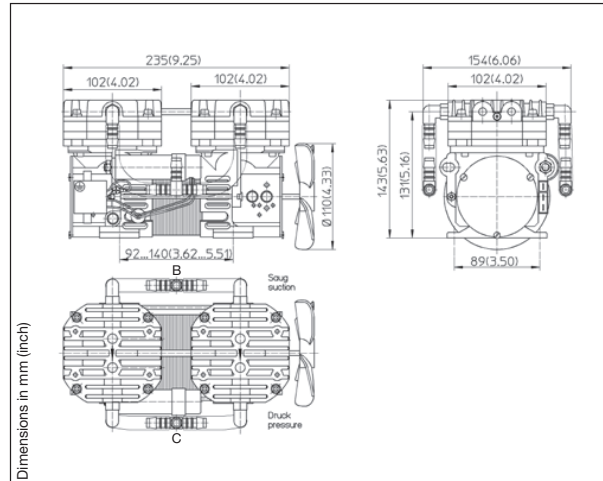
Diaphragm, Valves  
Chamber } O-Ring  
8011ZVR - 35 AEE  
Type | Series | Eccentric  
| Vacuum  
| Double head

The information presented in this material is based on technical data and test results of nominal units. It is believed to be accurate and reliable and is offered as an aid to help in the selection of Thomas products. It is the responsibility of the user to determine the suitability of the product for the intended use and the user assumes all risk and liability whatsoever in connection therewith. Thomas does not warrant, guarantee or assume any obligation or liability in connection with this information.

**THOMAS**  
by Gardner Denver

# Diaphragm Pump 8011ZVR/P AC

<b>Flow</b>	<b>56,0 l/min</b>
<b>Max. vacuum</b>	<b>98%</b>



## Pneumatic Data

Description	8011ZVR/P-35 AEE*
Part number	230 V/50 Hz 80110131
Max. flow	56,0 l/min
Max. vacuum	98%
Max. continuous vacuum	98%
Max. restart vacuum	Ambient pressure

## Electrical Data

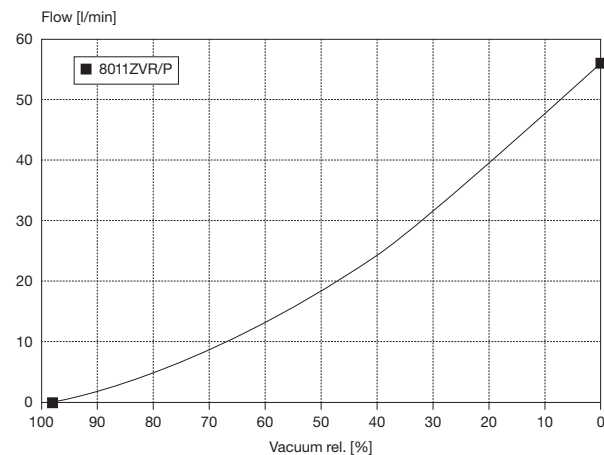
Motor type	Capacitor
Nominal voltage	230 V/50 Hz
Nominal speed	1270 rpm
Current consumption	0,6 A
Starting current	1,4 A
Power consumption	95 W
Protection class	IP00
Motor insulation class	F
Thermal switch	140 °C

## General Data

Ambient temperature	15 to 40 °C
Media temperature	10 to 60 °C
Weight	5,0 kg
Port direction	BC
Configuration	Parallel/Series

\* The changeover from parallel to series operation is controlled automatically via the vacuum within and an integral auxiliary valve.

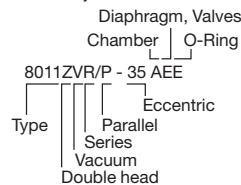
## Flow Curves



Choice of materials	Standard	Option
Chamber + Head	Aluminium	Aluminium hard coated

Diaphragm	EPDM	-
Valves	EPDM	FKM vapour resistant
O-Ring	EPDM	-

Model key:



8011... Stock programme

The information presented in this material is based on technical data and test results of nominal units. It is believed to be accurate and reliable and is offered as an aid to help in the selection of Thomas products. It is the responsibility of the user to determine the suitability of the product for the intended use and the user assumes all risk and liability whatsoever in connection therewith. Thomas does not warrant, guarantee or assume any obligation or liability in connection with this information.

**THOMAS**  
by Gardner Denver

# Note





ClimatePartner<sup>o</sup>  
climate neutral

Print | ID: 53097-1311-1001

Printed in Germany.  
Art.-Nr.: 17000139 02/2015