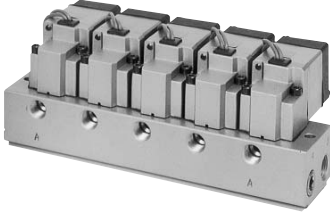


# Series VS3115/3110

# Manifold Specifications



## Specifications

Manifold type				B mount			
Max. number of stations				10 stations			
Exhaust type	Port location/Port size			Port direction			Applicable valve model
	P	A	E	P	A	E	
Common	Base	Base	Base	Side	Side	Side	VS3114-00□□
	3/8	1/4	3/8	Side	Bottom	Side	
Accessory		Blanking plate (With gaskets and screw)				AXT338-17A	

## How to order manifold

**VVS31** **0** **05** **1** **□**

**0**: Port location/Port size  
**05**: Valve stations  
**1**: EXH port type  
**□**: Thread type

	P	A	E
0	Side	Side	Side
1	Side	Bottom	Side

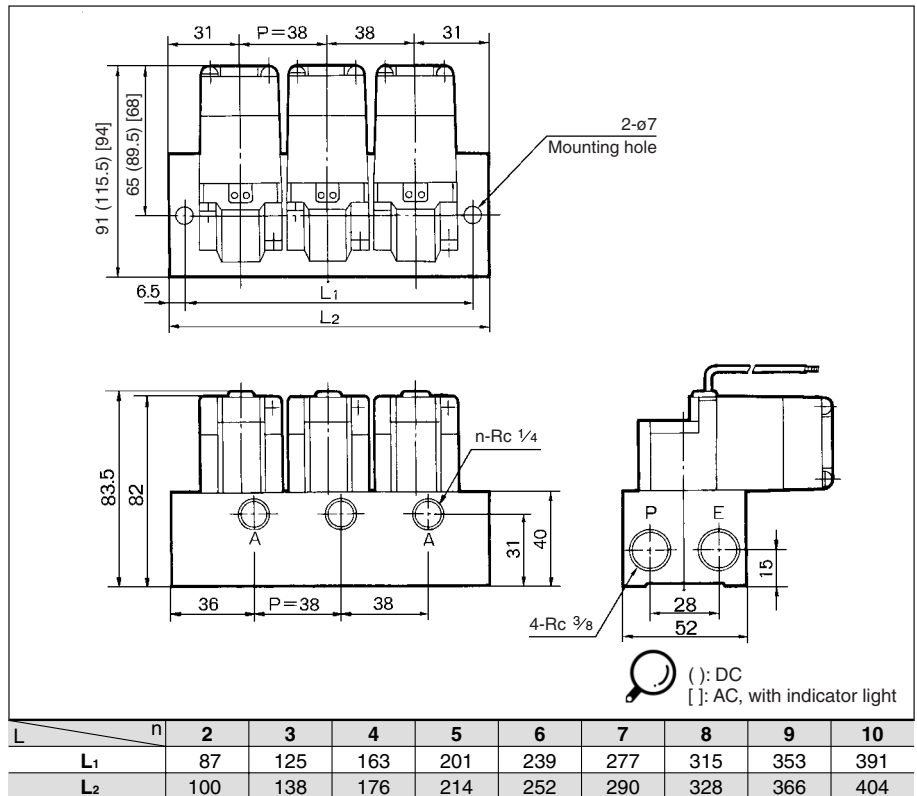
Valve stations	
05	5 stations
10	10 stations

EXH port type	
1	Common EXH

Thread type	
Nil	Rc
N*	NPT
T*	NPTF
F*	G

\* Option

## Dimensions



L<sub>1</sub> = 38n + 11, L<sub>2</sub> = 38n + 24 n: Station

Formula for manifold weight M = 0.16n + 0.1 (kg)